

Right to Information Application

202047

Infrastructure Services Response

1. Separately for each financial year from 2017 to present, the number of break and enter incidents at schools and the total cost of claims made by schools as a result of break and enter incidents.

Total break and enter incidents reported through Queensland Police Service - Protective Services			
Financial year	2017/2018	2018/2019	2019/2020
Number of incidents	431	436	439

Resource Replacement Scheme (RRS) claims for losses as a result of break and enter incidents			
Financial year	2017/2018	2018/2019	2019/2020
Number of claims	93	122	102
Cost	\$169,812	\$303,116	\$225,872

- Based on claims made to RRS as at 30 June 2020.
- Not all break and enters result in a claim being made to the Resource Replacement Scheme and therefore total rectification costs are not collected centrally.
- Schools have 3 months from the date of the incident to lodge a claim.

2. Separately for each financial year from 2017 to present, the number of vandalism/malicious damage incidents at schools and the total costs of claims made by schools as a result of incidents of vandalism/malicious damage.

Total vandalism incidents reported through Queensland Police Service - Protective Services			
Financial year	2017/2018	2018/2019	2019/2020
Number of incidents	794	770	736

- Includes incidents recorded by DoE as vandalism, minor vandalism, graffiti, minor graffiti and major damage.

Resource Replacement Scheme (RRS) claims for losses as a result of vandalism incidents			
Financial year	2017/2018	2018/2019	2019/2020
Number of claims	35	30	30
Cost	\$369,907	\$643,379	\$99,662

- Based on claims made to RRS as at 30 June 2020.
- Not all intentional damage results in a claim being made to RRS and therefore total rectification costs are not collected centrally.
- School officers may repair/rectify some intentional damage particularly graffiti damage which may be cleaned off or painted over by cleaners or grounds staff.
- Schools have 3 months from the date of the incident to lodge a claim.



3. Separately for each financial year from 2017 to present, the number of arson incidents at schools, broken down by the number of reported cases and major arson incidents, and the cost of claims made by schools as a result of arson incidents.

Total arson incidents reported through Queensland Police Service - Protective Services			
Financial year	2017/2018	2018/2019	2019/2020
Number of arson incidents	23	17	17
Major incidents (over \$10,000) CONFIRMED as arson	0	1	0
Major incidents (over \$10,000) with UNDETERMINED cause	0	1	2

- Does not include:
 - Major fires confirmed to not have been deliberately lit;
 - Minor incidents assessed as unlikely to have been deliberately lit;
 - Fires assessed to not have been intended to cause damage (i.e. lit as a campfire etc.), or;
 - Events where no property has been damaged (i.e. where items such as paper/foliage have been found with burn marks etc.)

Resource Replacement Scheme (RRS) claims for losses as a result of arson and fire incidents			
Financial year	2017/2018	2018/2019	2019/2020
Number of claims	5	10	7
Cost	\$316,599	\$2,881,517	\$1,578,818

- Based on claims made to RRS as at 30 June 2020.
- Based on cost finalised with the Queensland Government Insurance Fund.
- Not all fire or arson damage result in a claim being made to RRS and therefore total rectification costs are not collected centrally.
- RRS database does not differentiate between fire and arson, the figures include all fire incidents.

4. Separately for each financial year from 2017 to present, the total number of incidents causing loss or damage at schools that have resulted in claims being made by schools and the total costs of those claims.

Total number of claims and cost			
Financial year	2017/2018	2018/2019	2019/2020
Number of claims	133	163	139
Cost	\$856,318	\$3,828,012	\$1,904,352

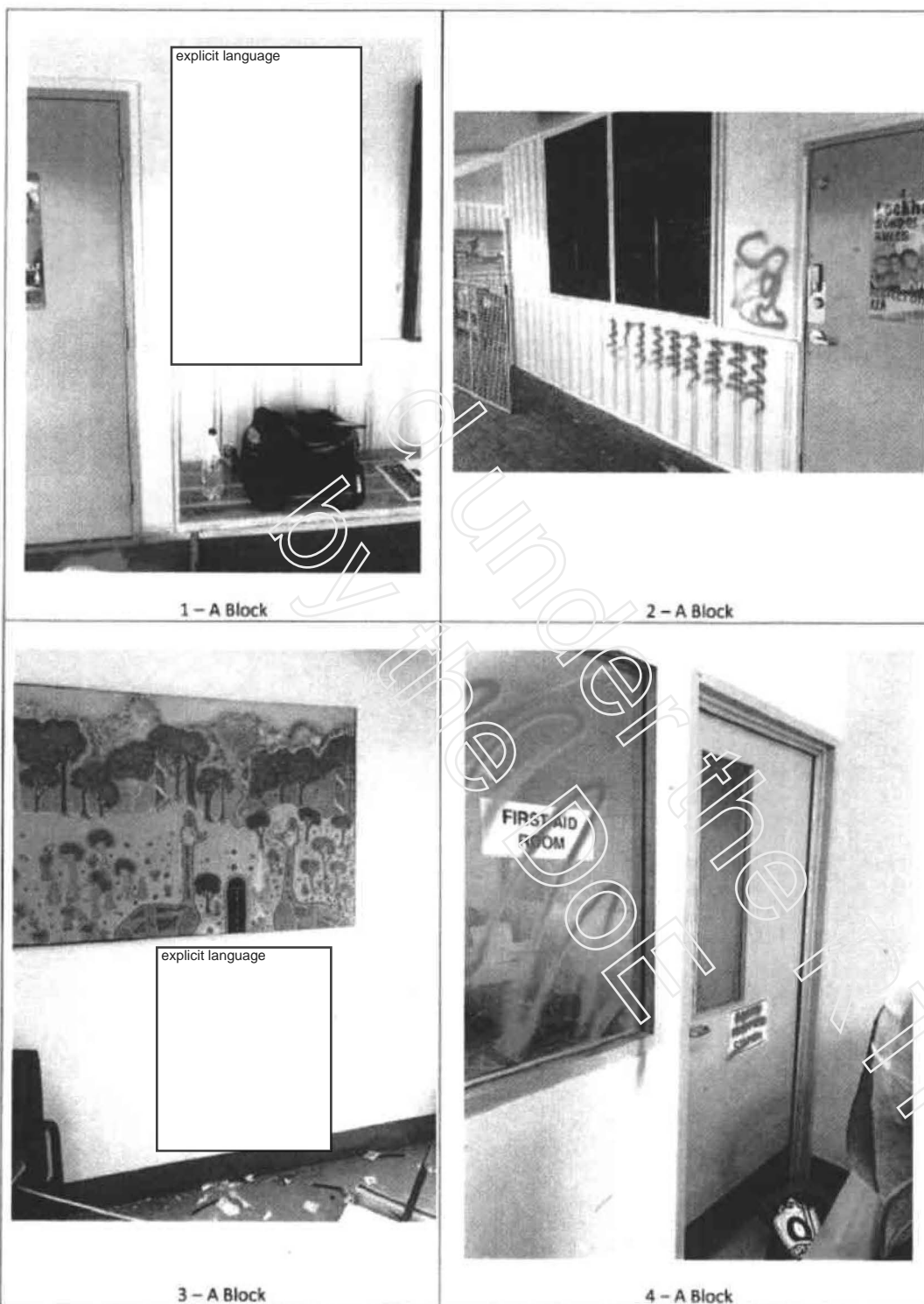


- 5. The top 5 schools with the most expensive claims as a result of break and enter incidents, vandalism/malicious damage incidents and arson, together with the amount of these claims. Please include related CCTV/video footage and photos.**

	School	Cost of claim (\$)
1	Morningside State School	\$1,618,548
2	Upper Mount Gravatt State School	\$920,418
3	Southport State High School	\$889,613
4	Warwick East State School	\$623,644
5	Lockhart State School	\$310,749

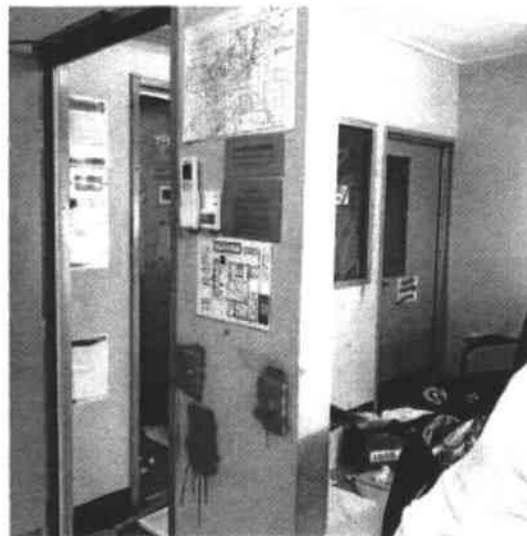
- Based on claims made to RRS as at 30 June 2020 for the 2017-18, 2018-19 and 2019-20 financial years.
- Based on cost finalised with the Queensland Government Insurance Fund.
- Schools have 3 months from the date of the incident to lodge a claim.







5 - A Block



6 - A Block

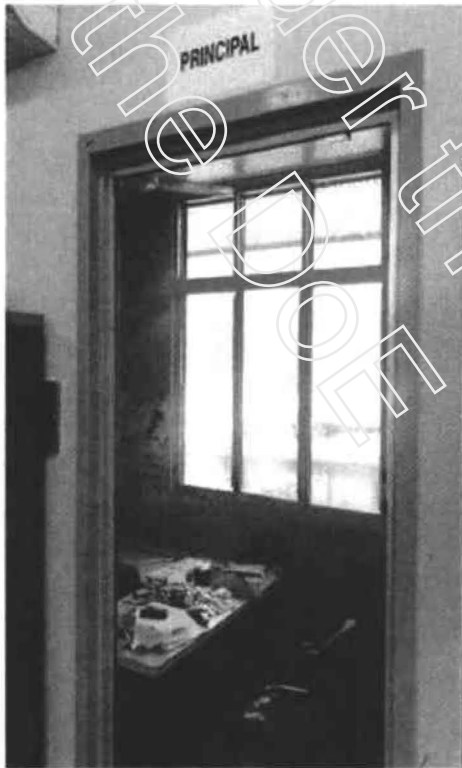


7 - A Block

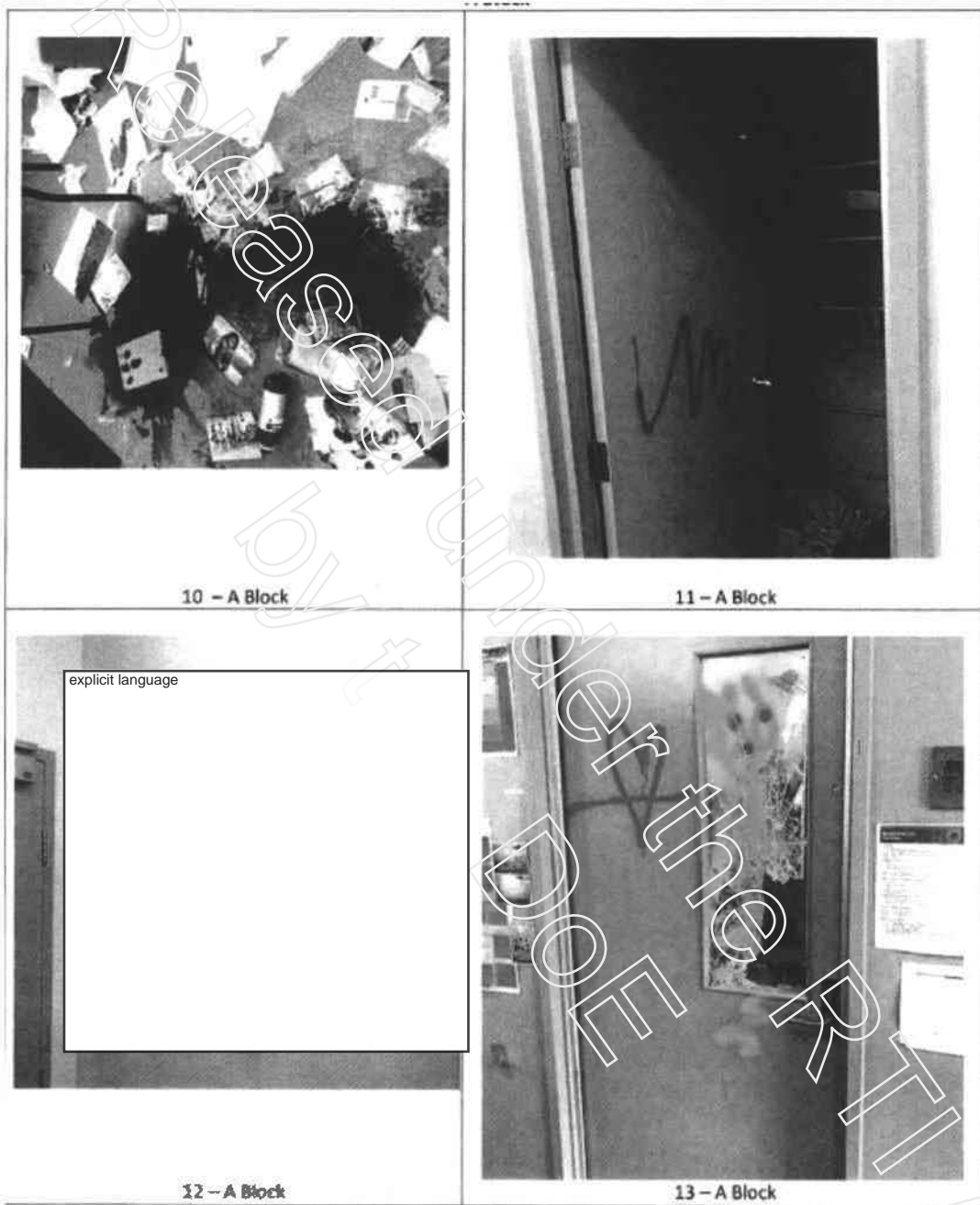
A BLOCK

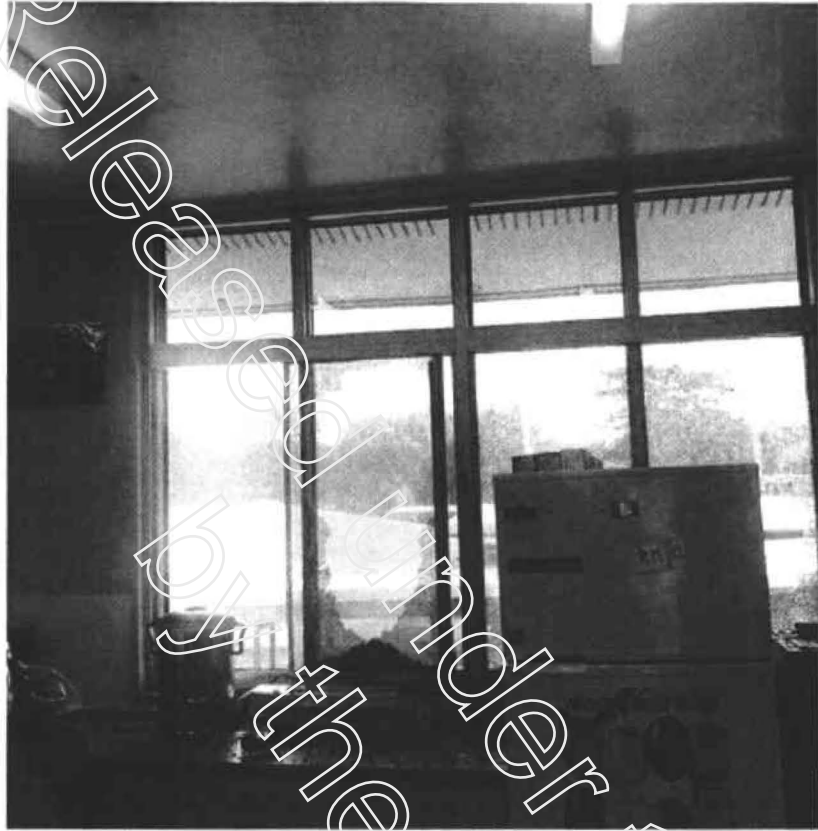


8 - A Block

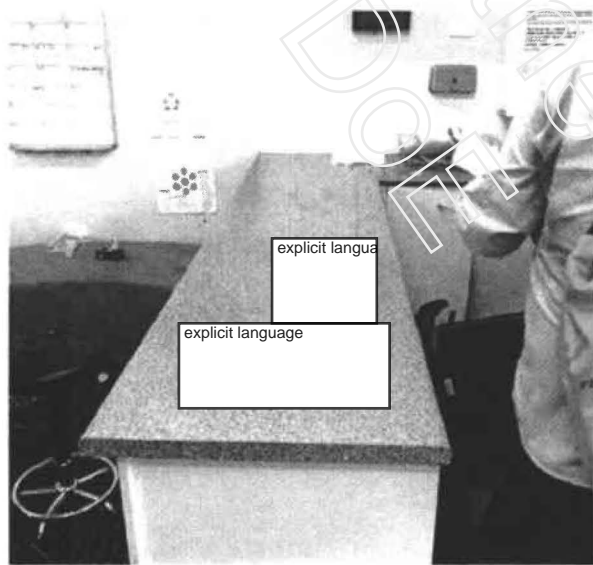


9 - A Block

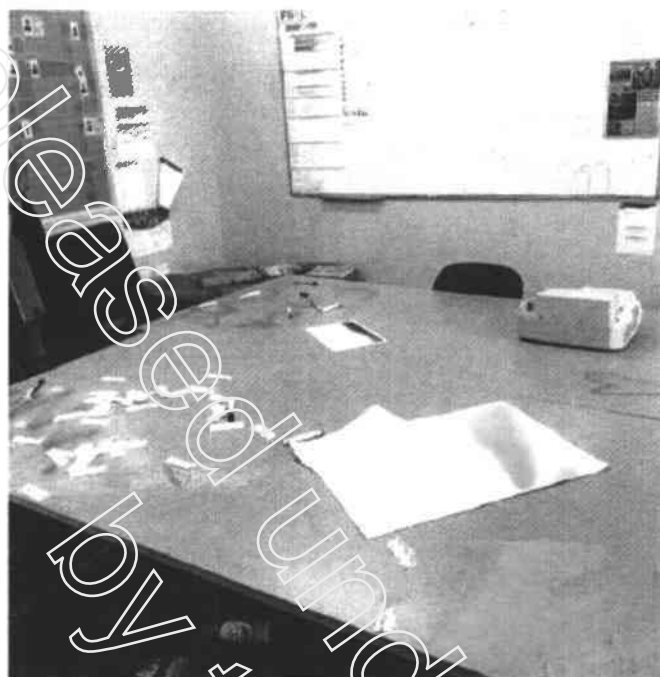




24 - A Block



15 - A Block

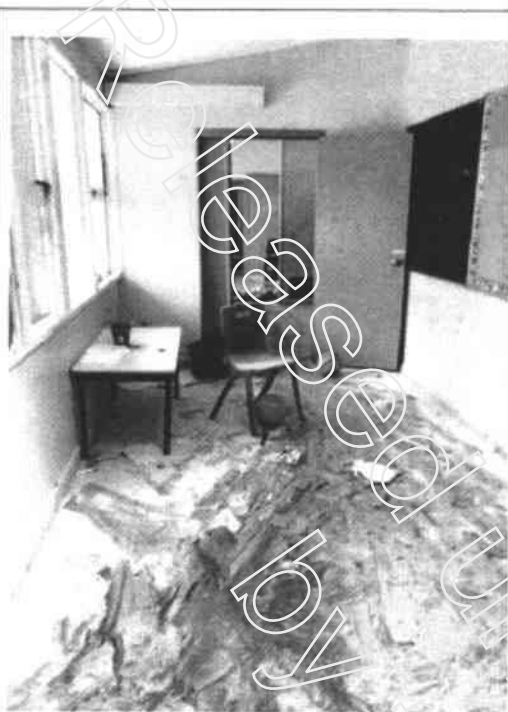


16 - A Block



17 - A Block





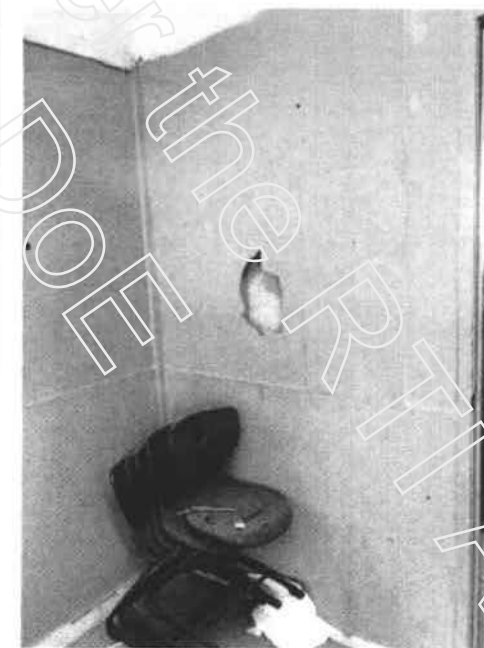
1 - B Block Upper



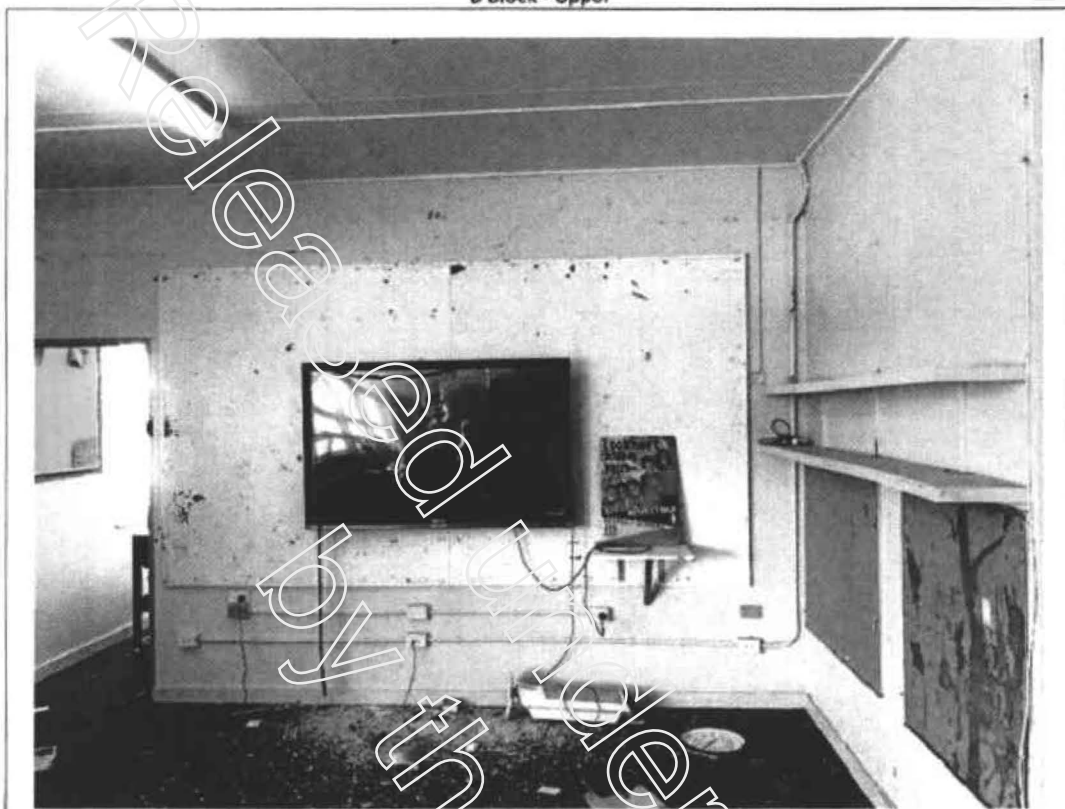
2 - B Block Upper



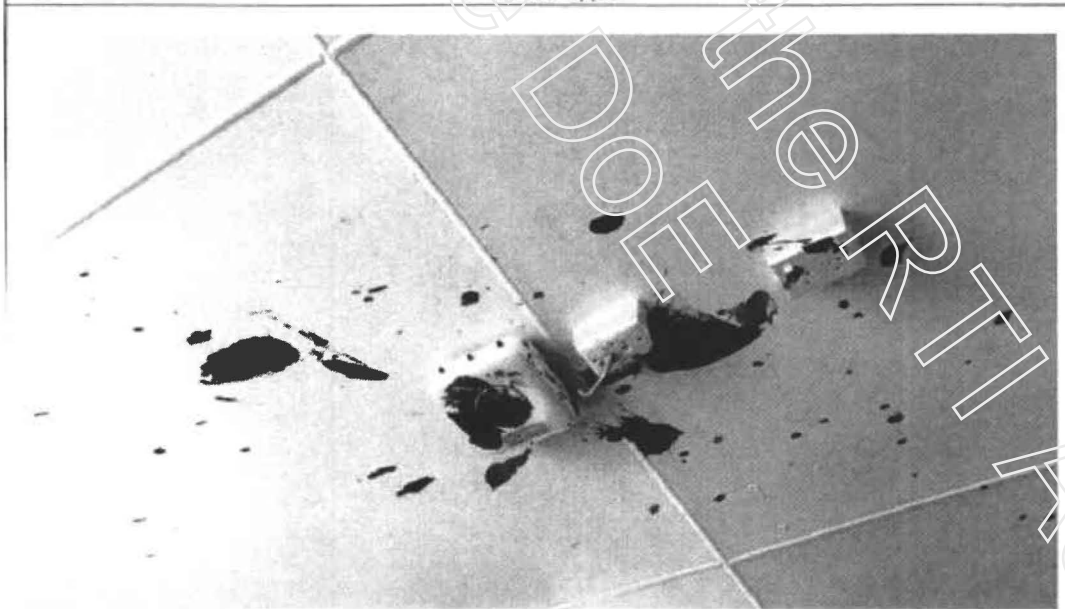
3 - B Block Upper



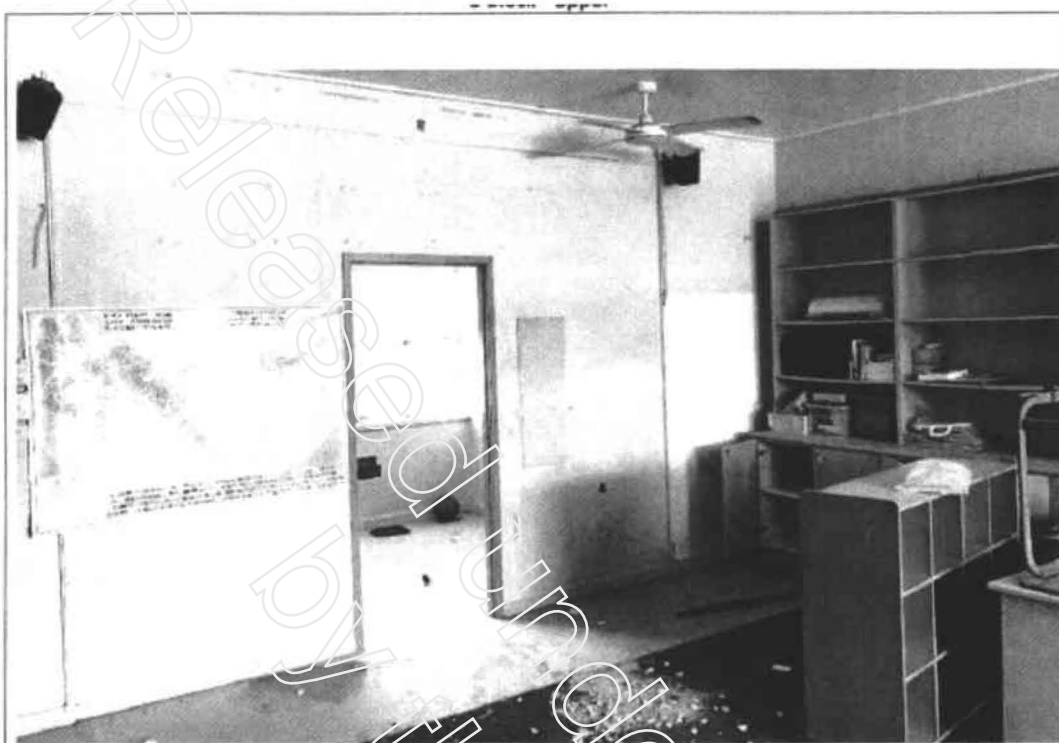
4 - B Block Upper



5 - B Block Upper



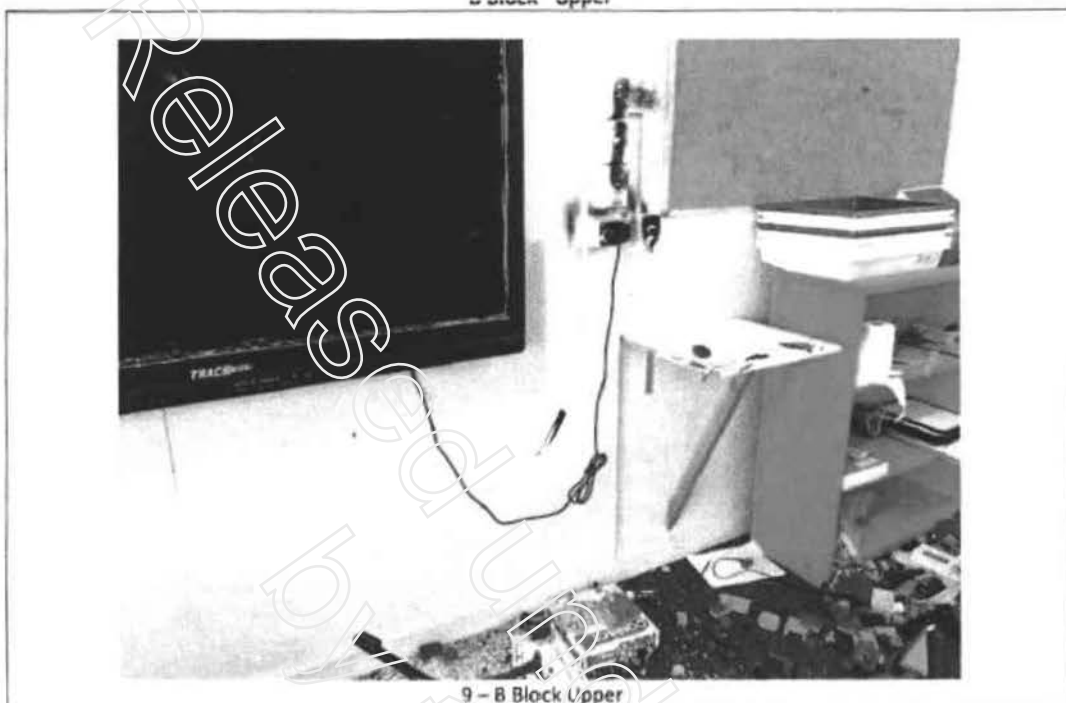
6 - B Block Upper



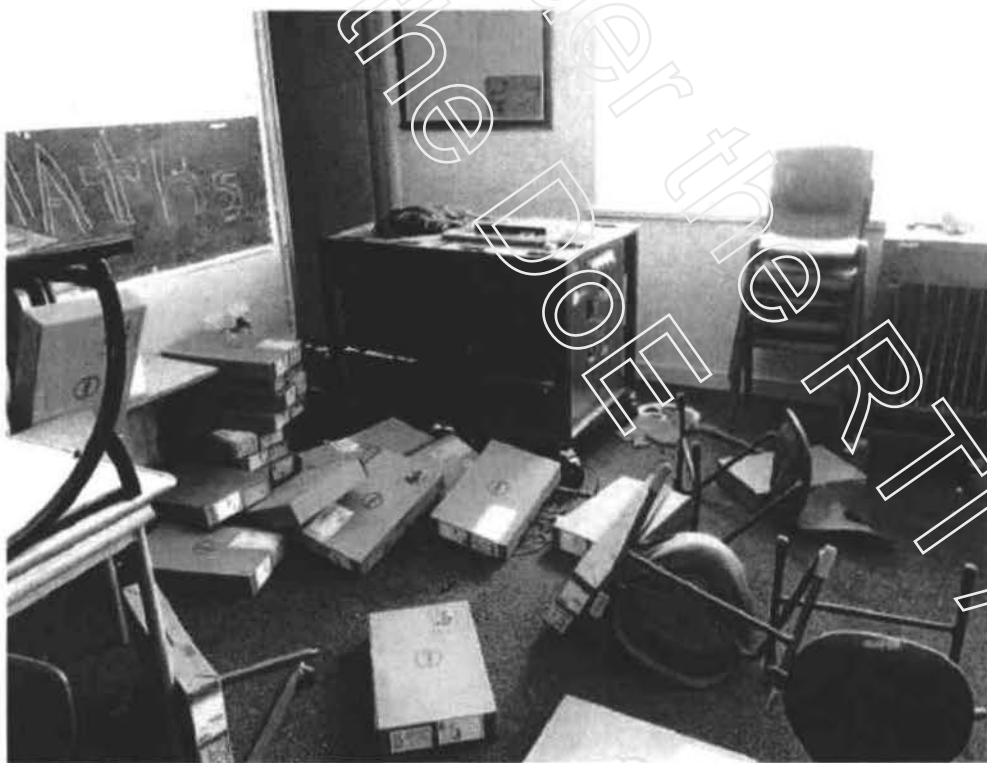
7 - B Block Upper



8 - B Block Upper

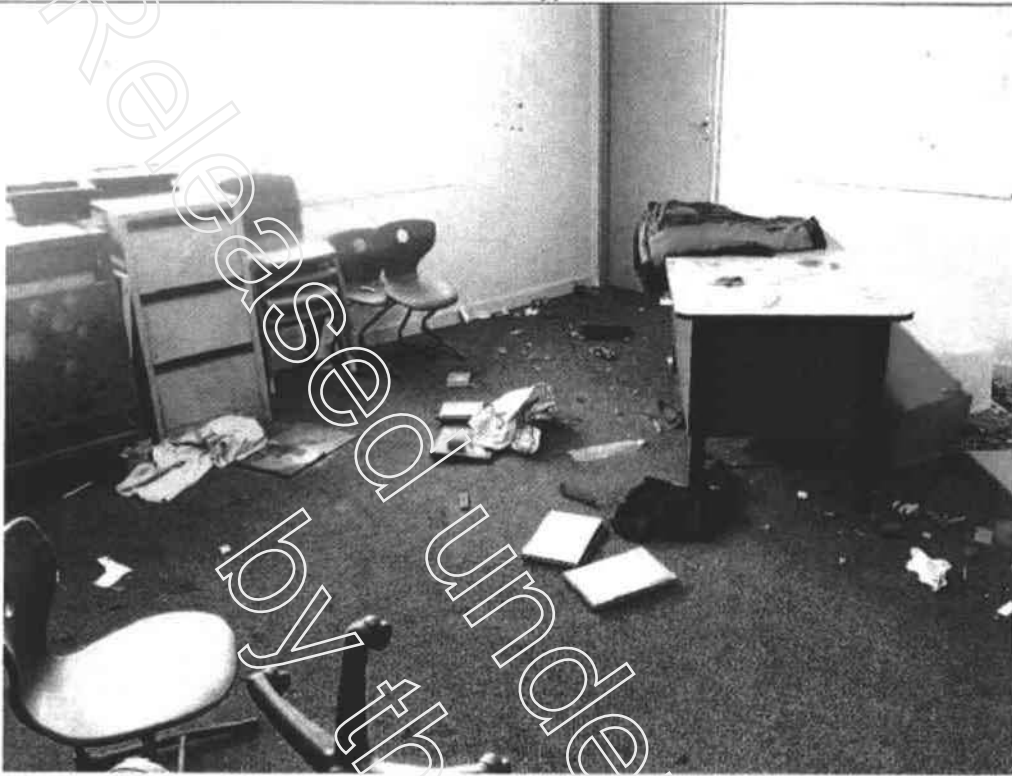


9 - 8 Block Upper



10 - 8 Block Upper

B Block - Upper

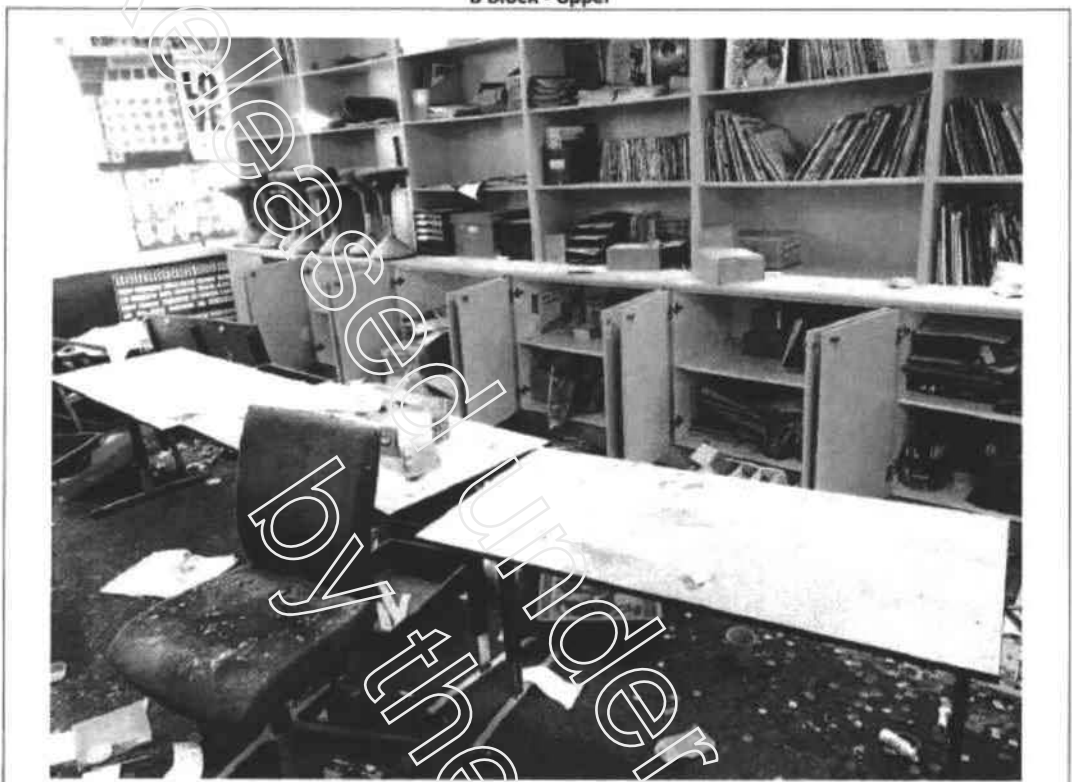


11 - B Block Upper



12 - B Block Upper

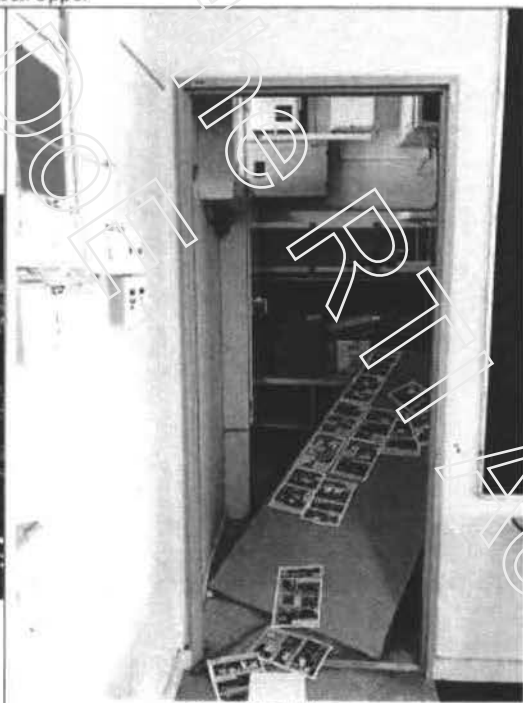




14 - B Block Upper

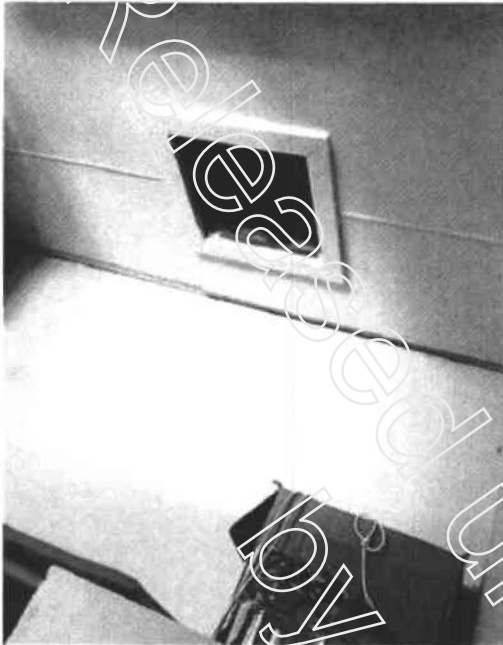


15 - B Block Upper



16 - B Block Upper

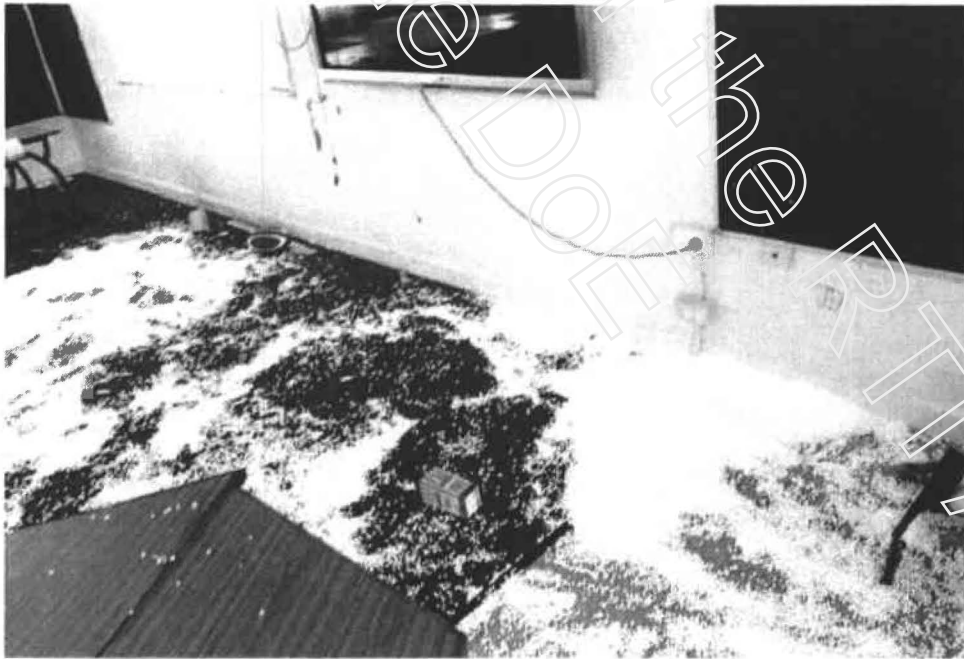
B Block - Upper



17 - B Block Upper



18 - B Block Upper

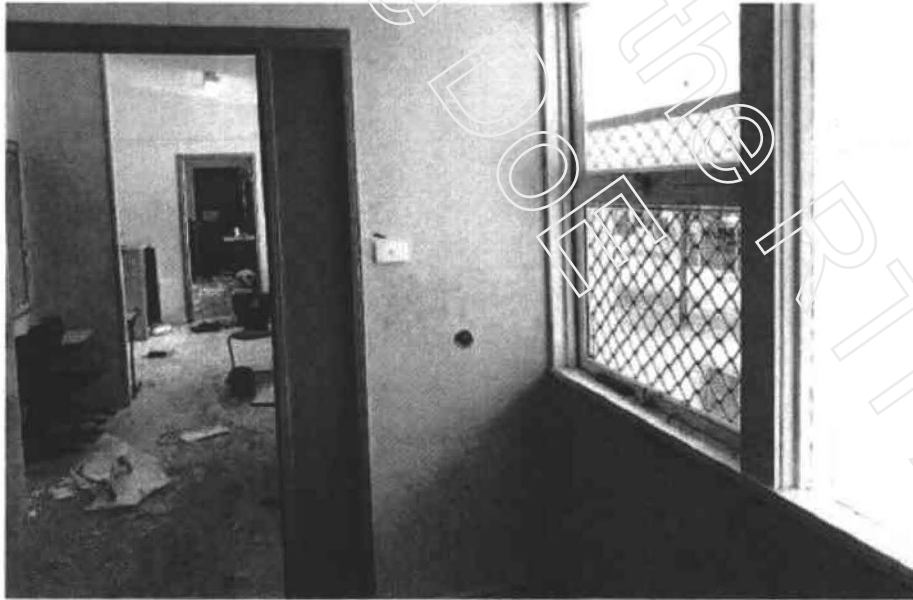


19 - B Block Upper

B Block - Upper



20 - B Block Upper



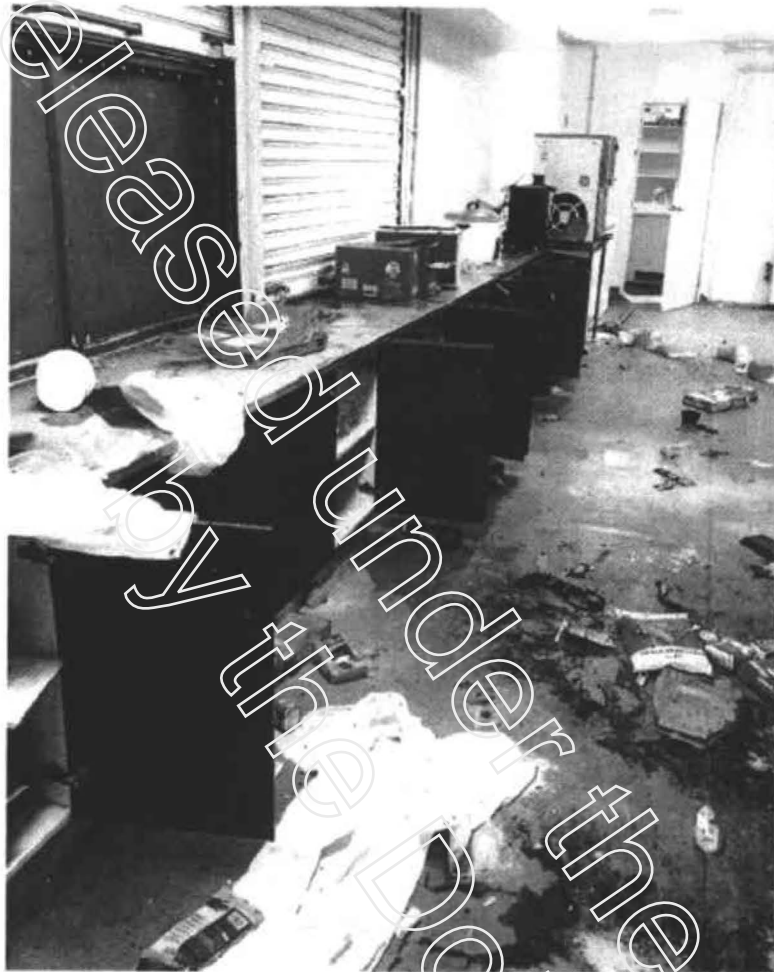
21 - B Block Upper



1 - B Block Tuckshop Under



2 - B Block Tuckshop Under



3 - B Block Tuckshop Under



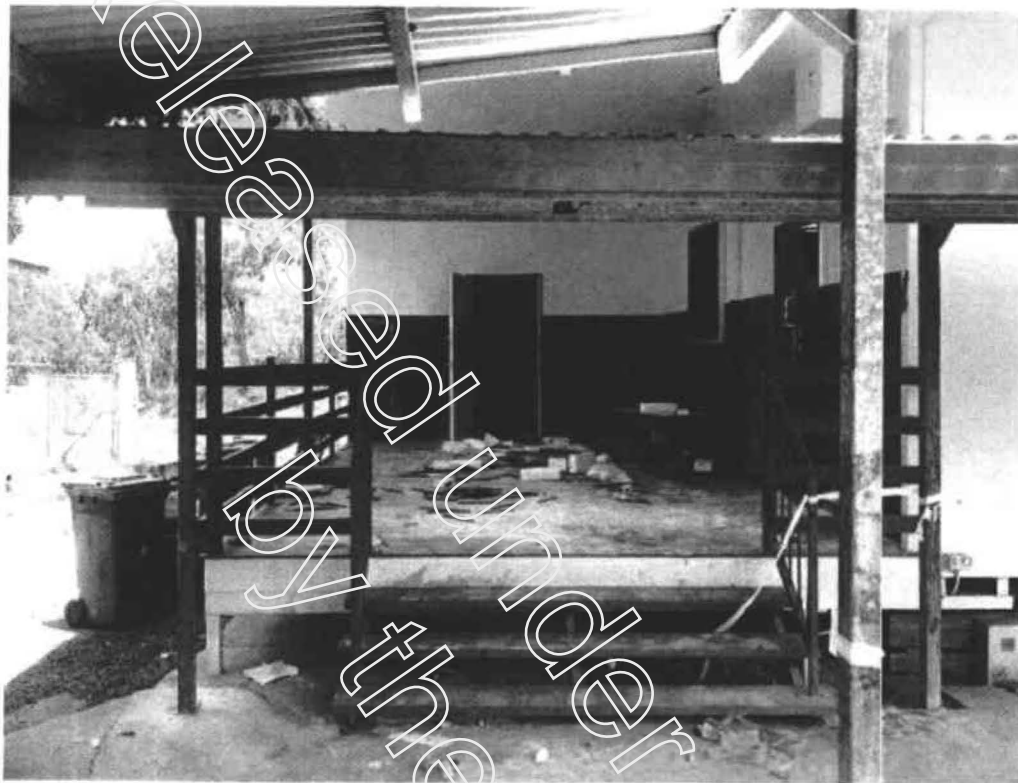
4 - B Block Under



5 - B Block Under



6 - Block Truckshop Under



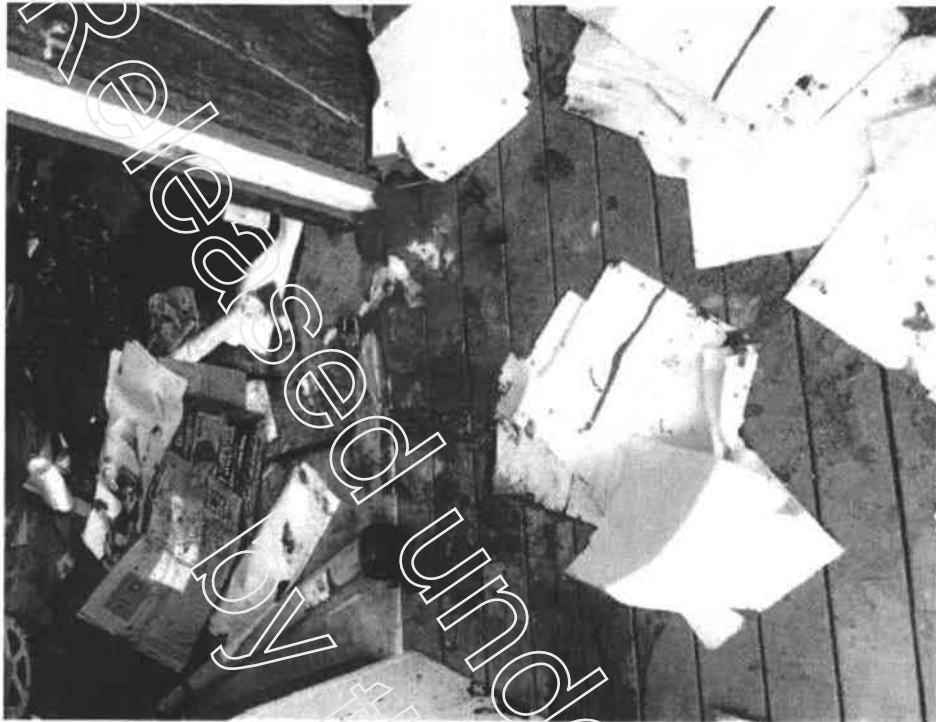
1 - C Block



2 - C Block



3 - C Block



4 - C Block



5 - C Block



6 - C Block



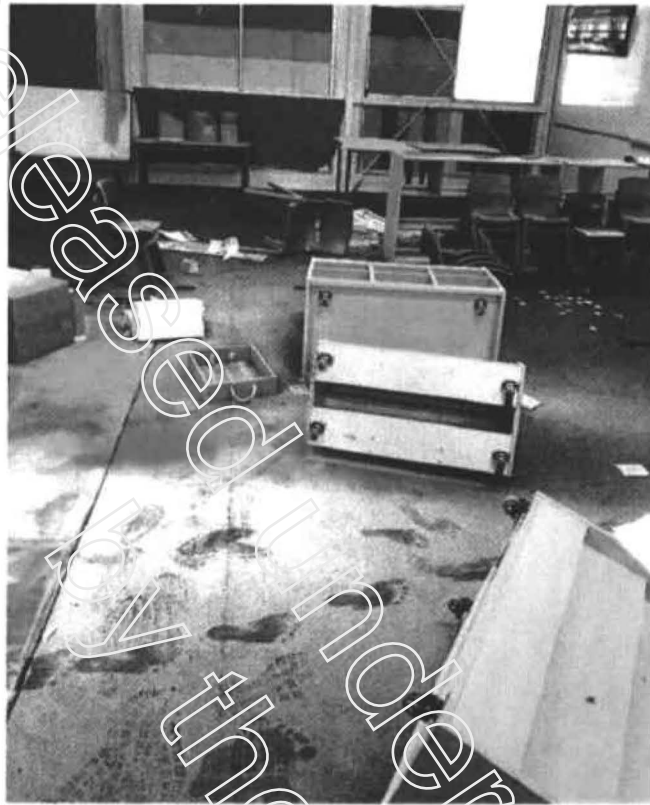
7 - C Block



8 - C Block



9 - C Block



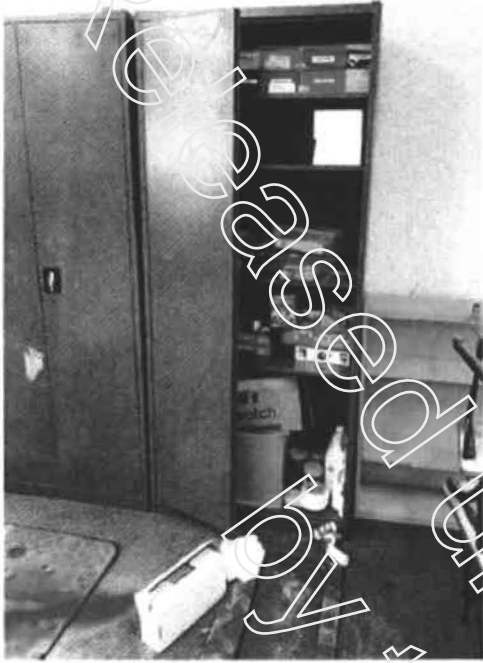
10 -- C Block



11 -- C Block



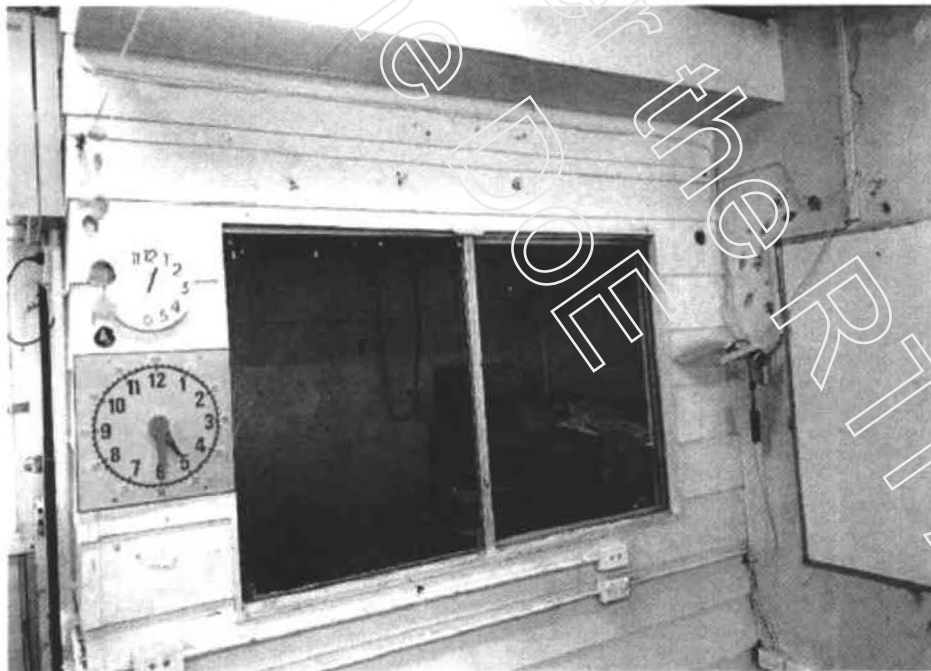
12 -- C Block



13 - C Block



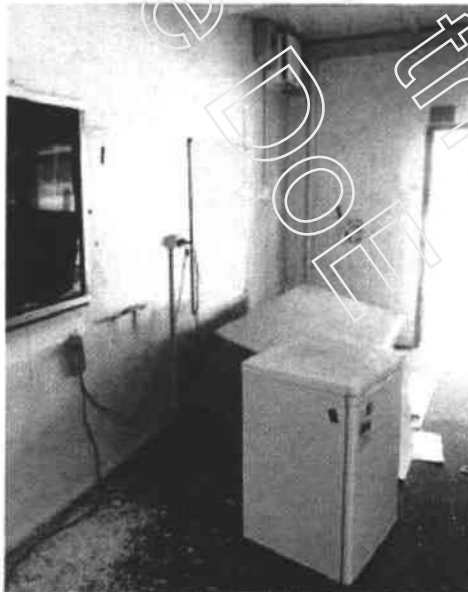
14 - C Block



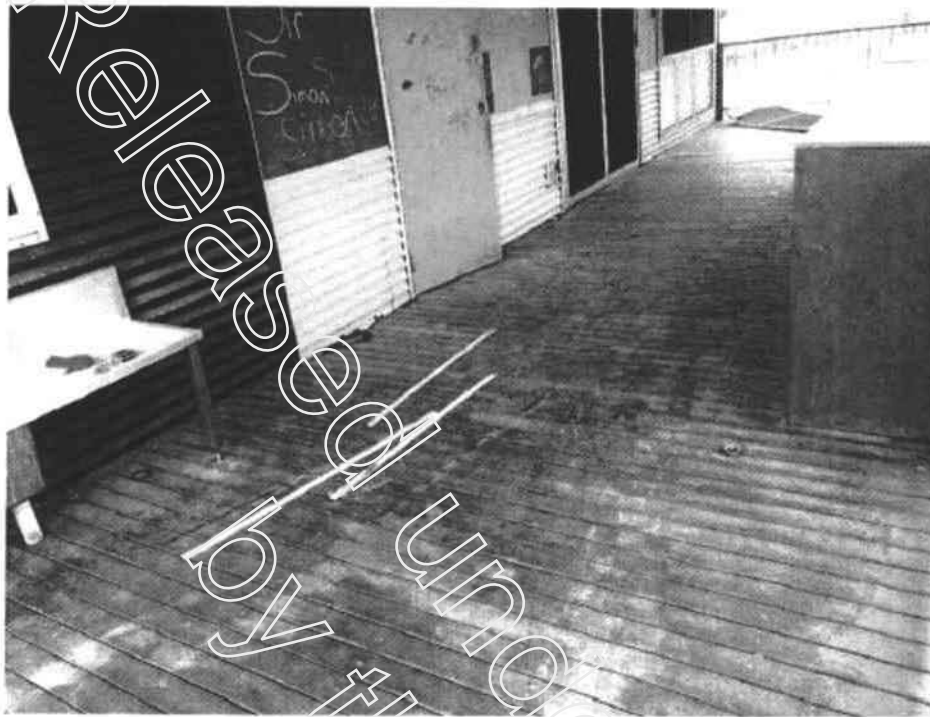
15 - C Block



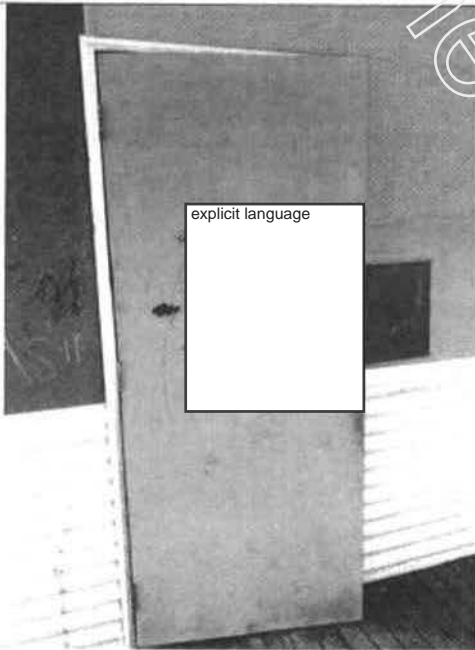
16 - C Block



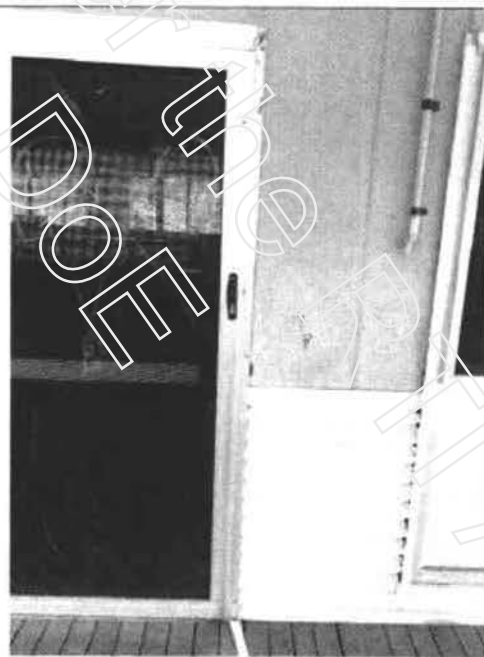
17 - C Block



1 - D Block



2 - D Block



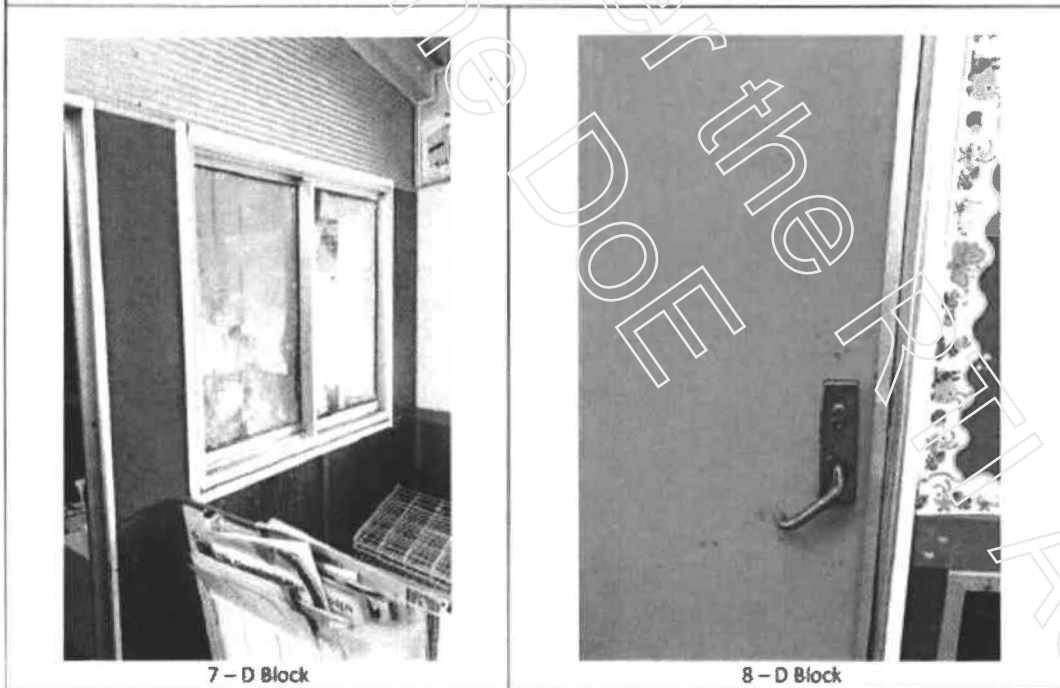
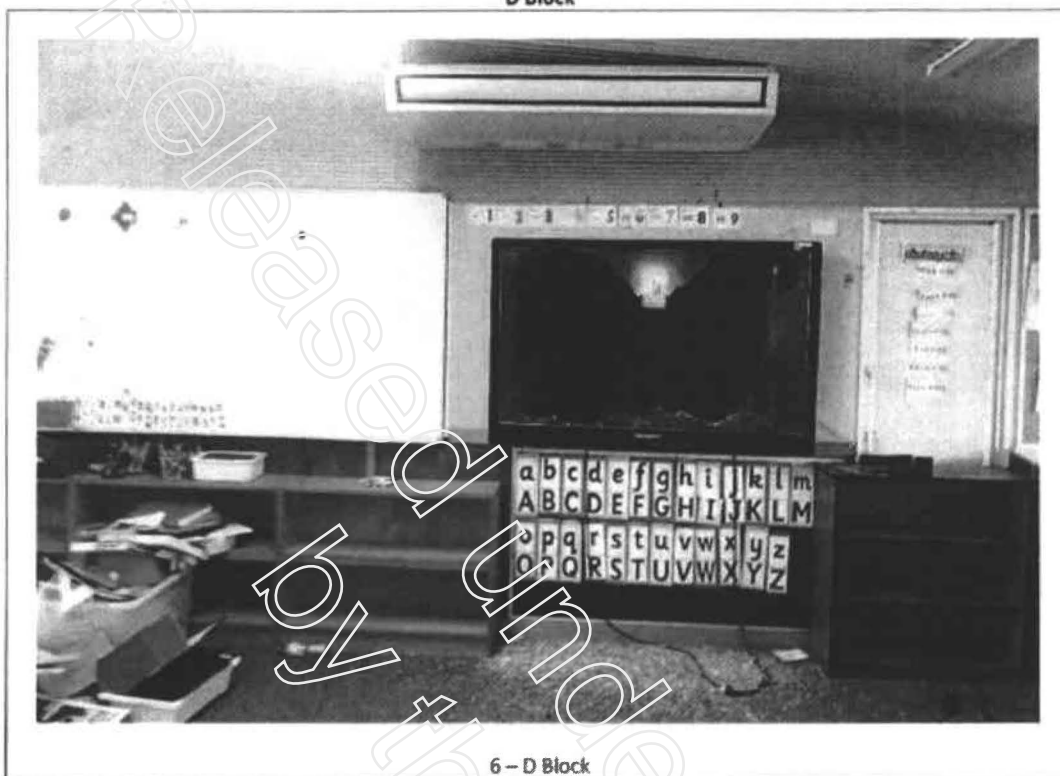
3 - D Block

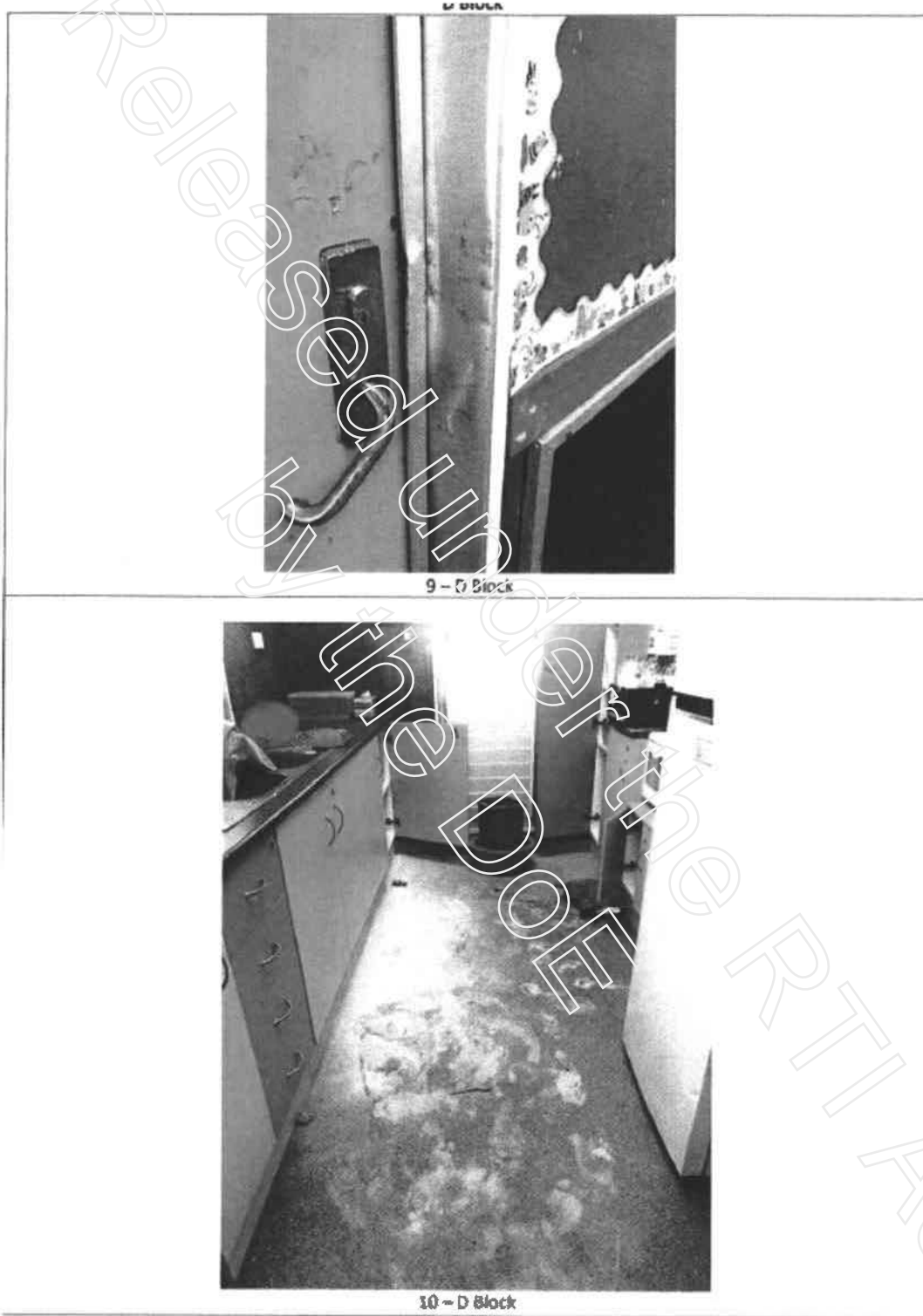


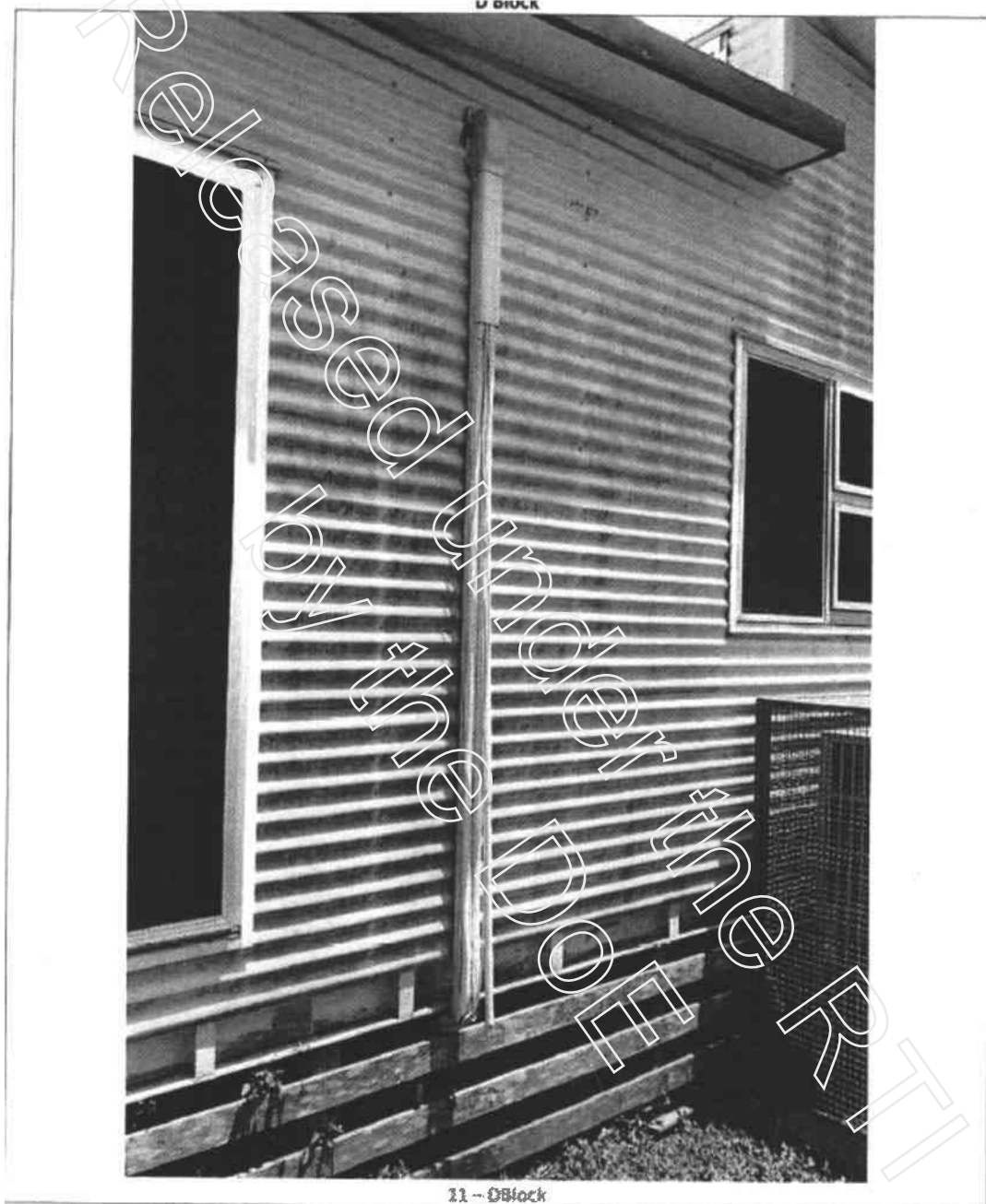
4 - D Block



5 - D Block





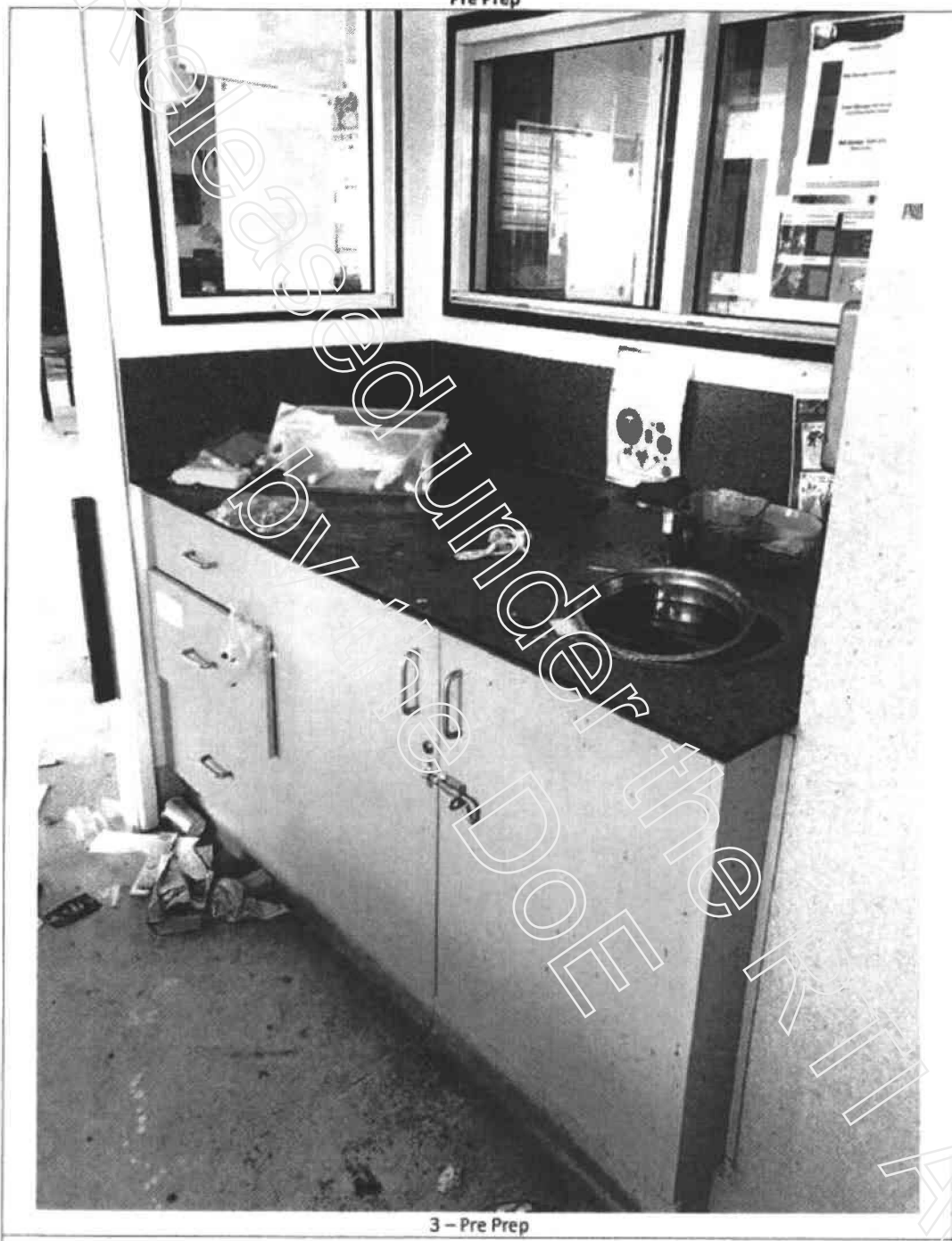


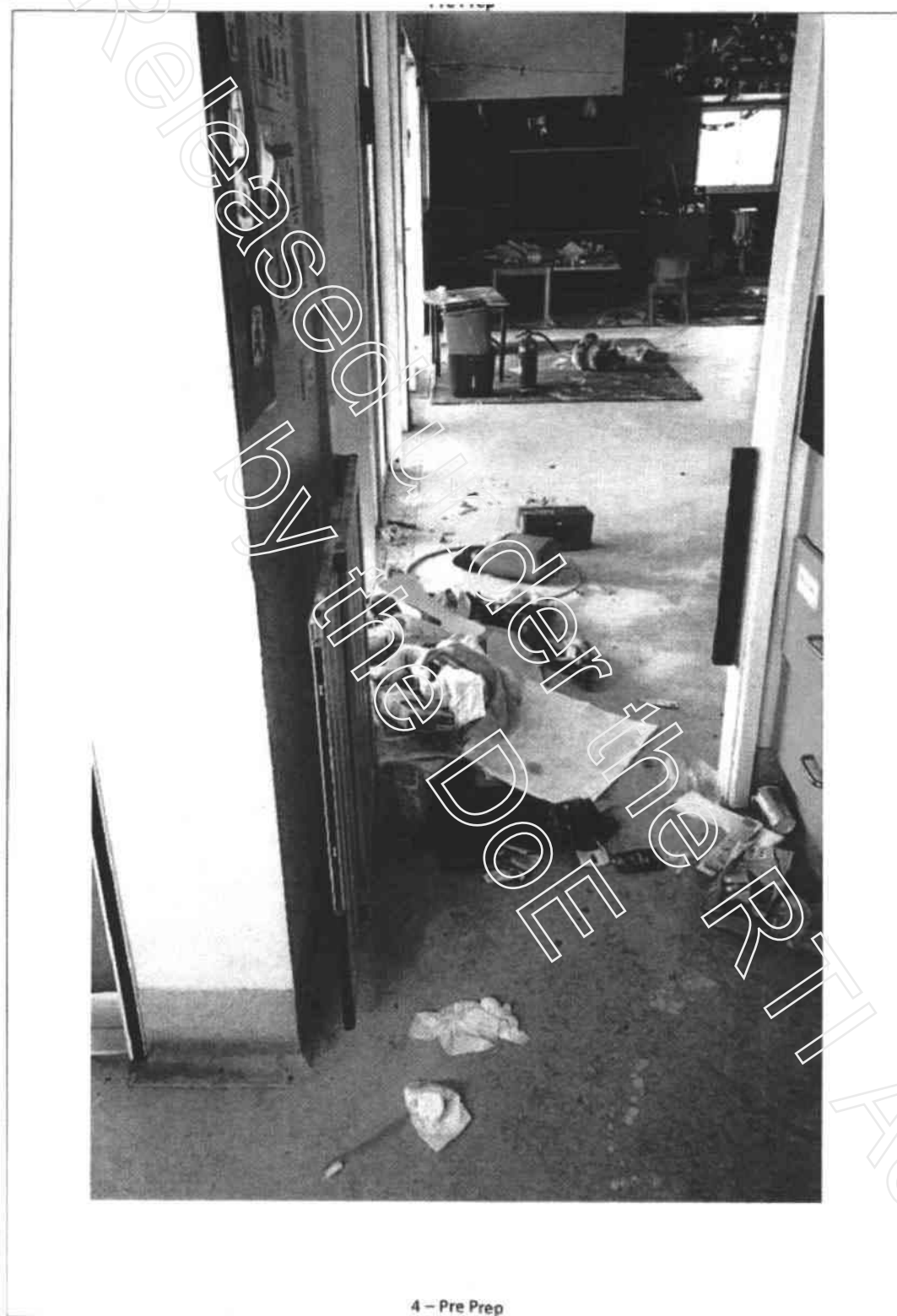


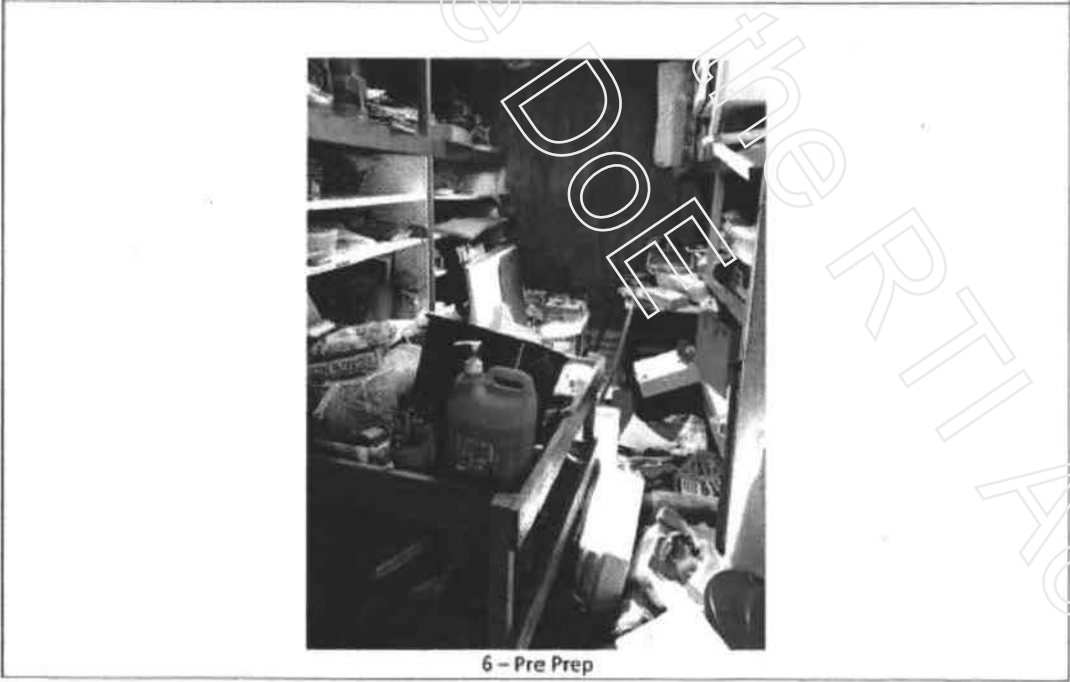
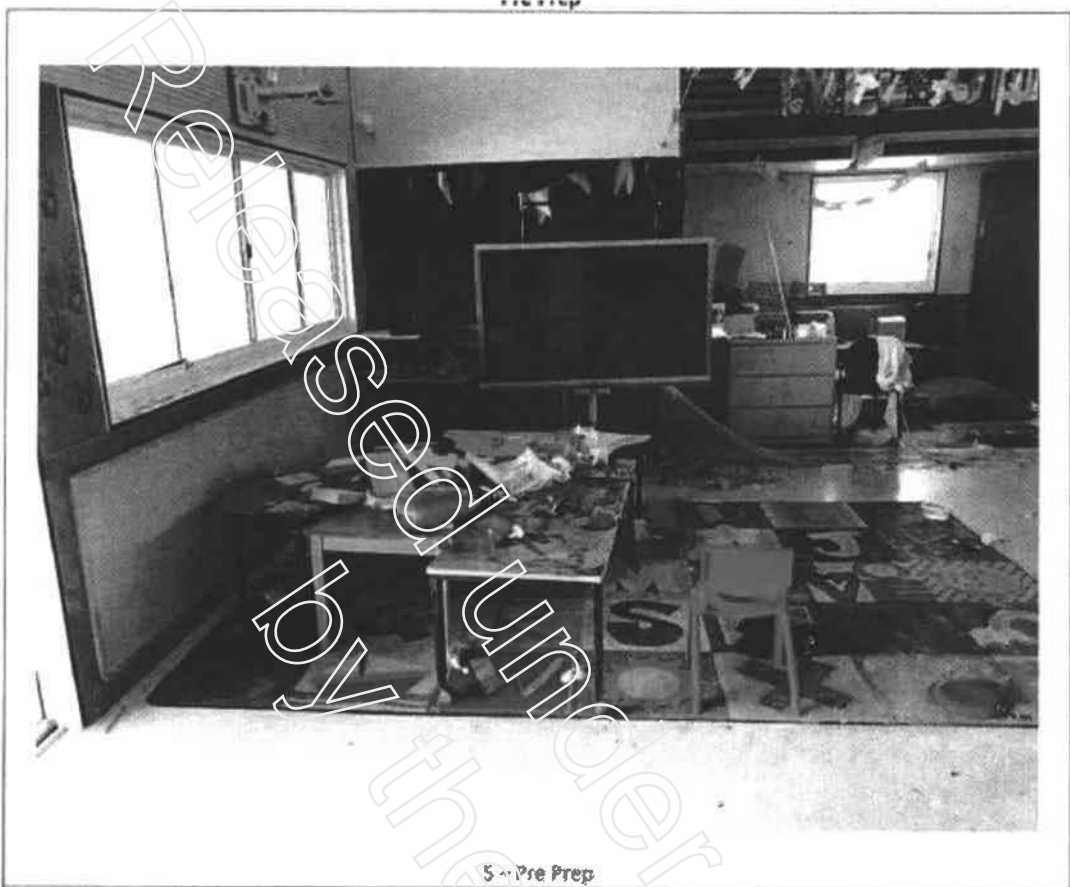
1 - Pre Prep



2 - Pre Prep



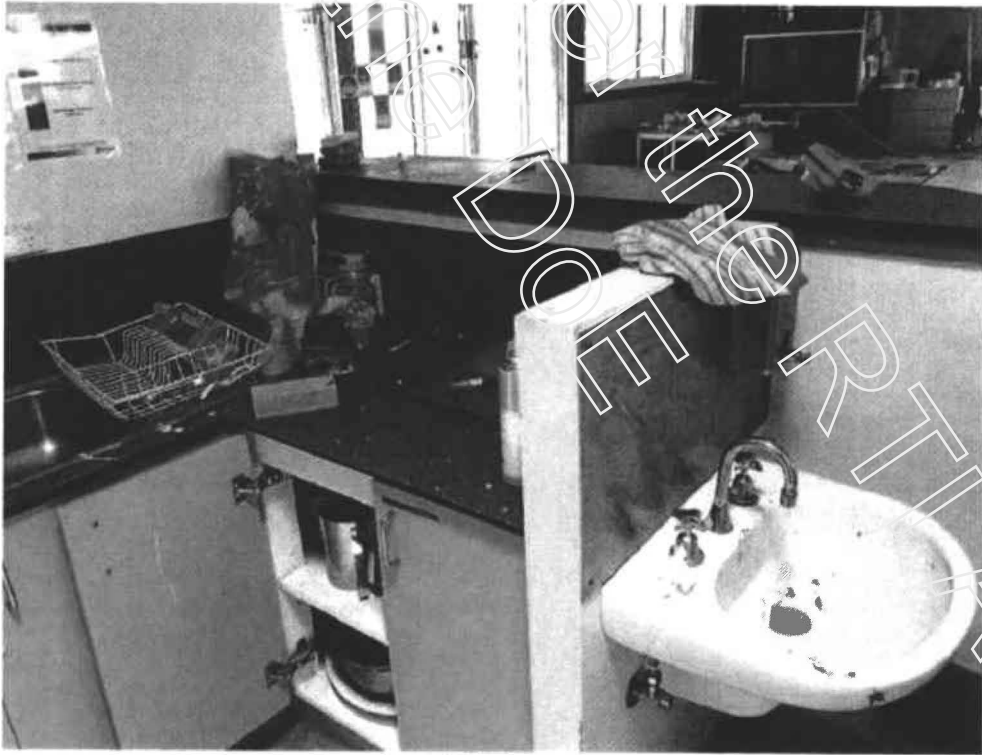




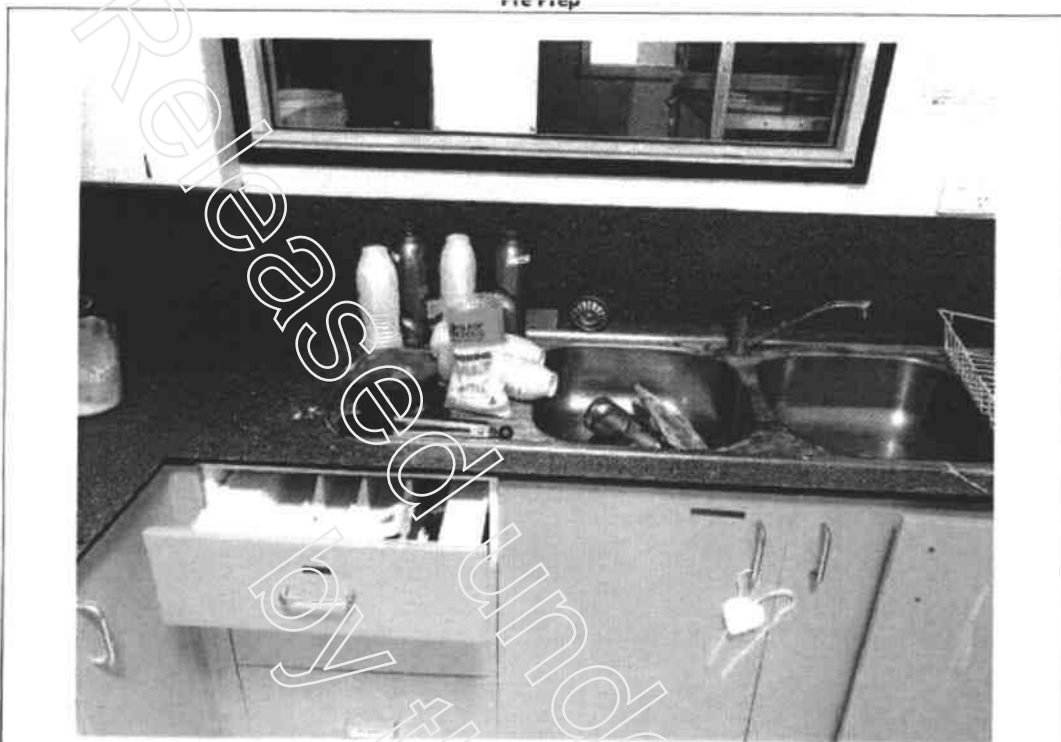
7-Pre Prep



7 - Pre Prep



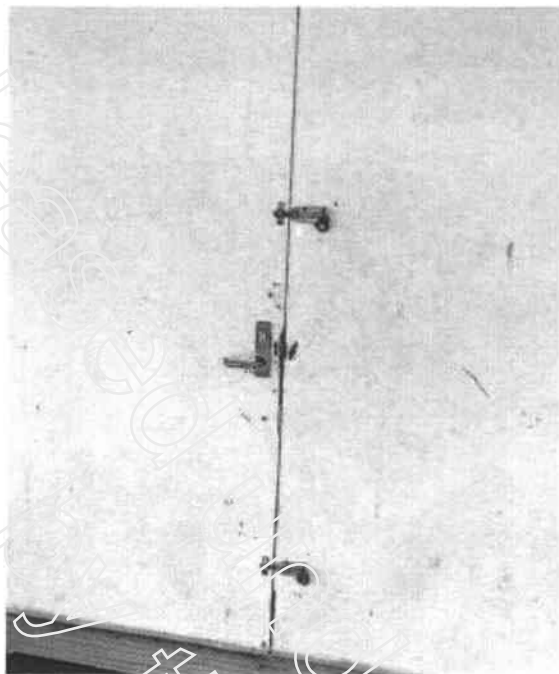
8 - Pre Prep



9 - Pre Prep



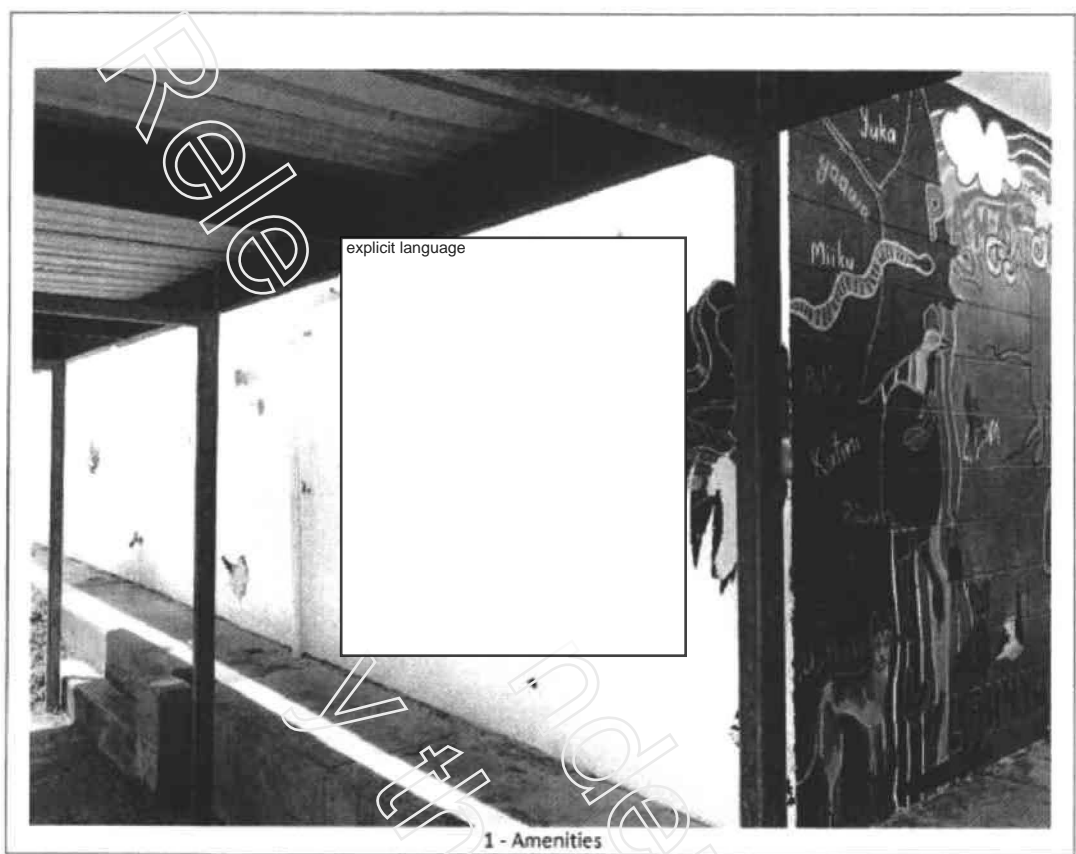
10 - Pre Prep



2 - Library (secondary)

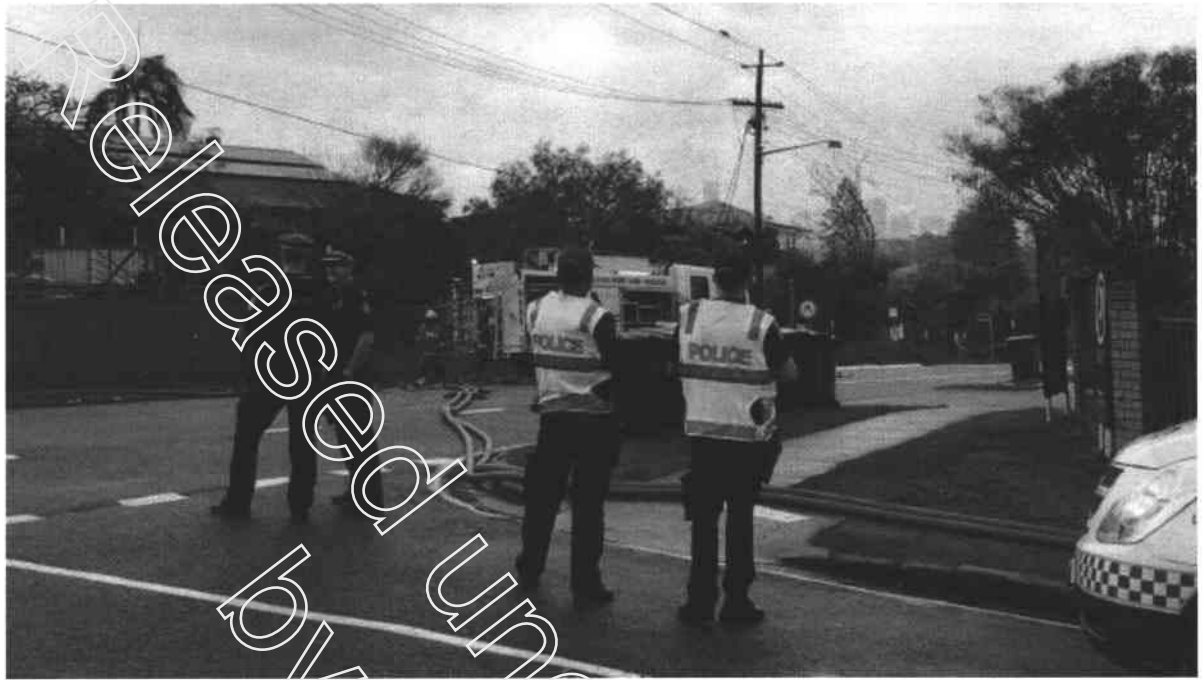


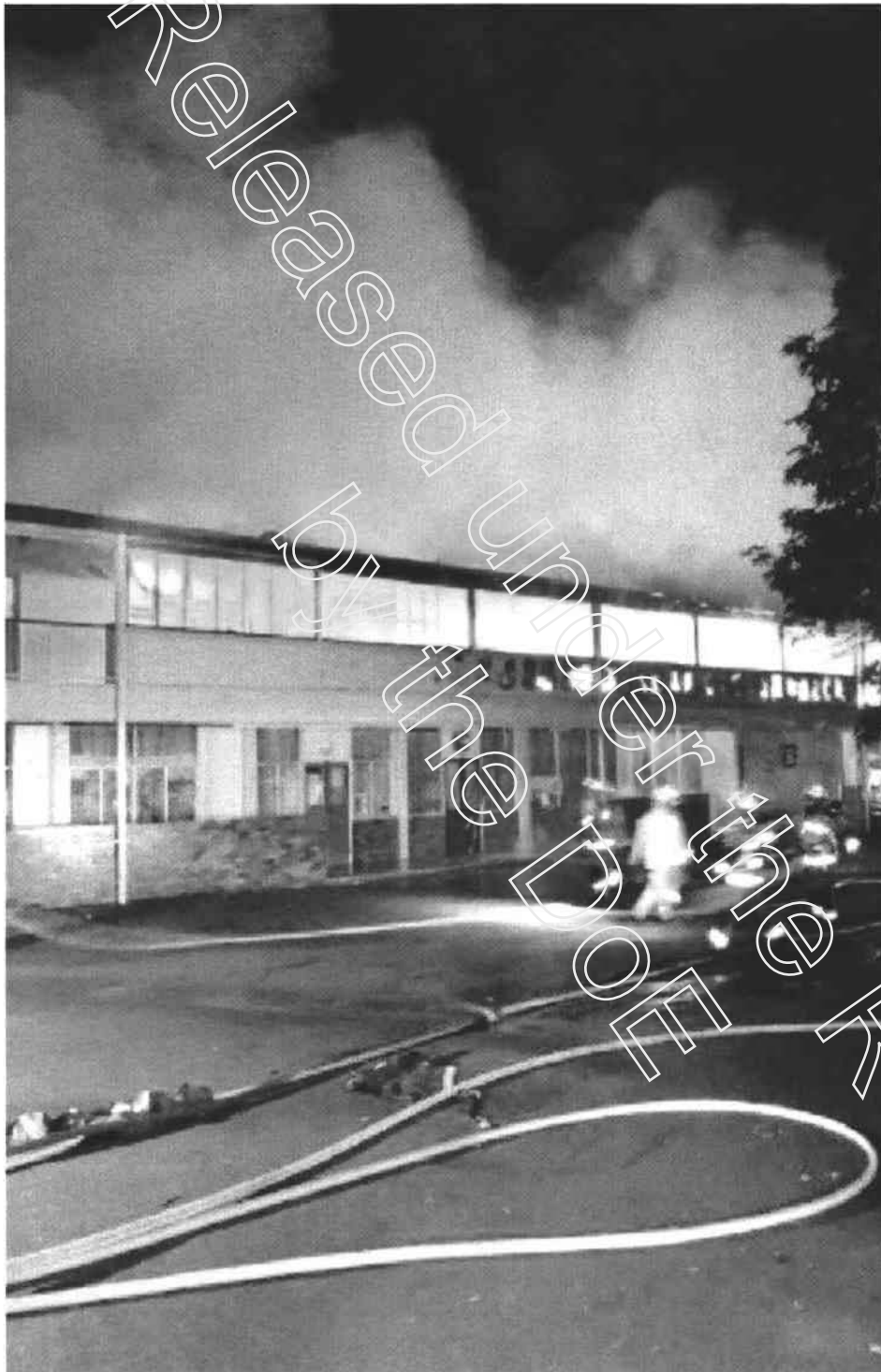
3 - Library (secondary)

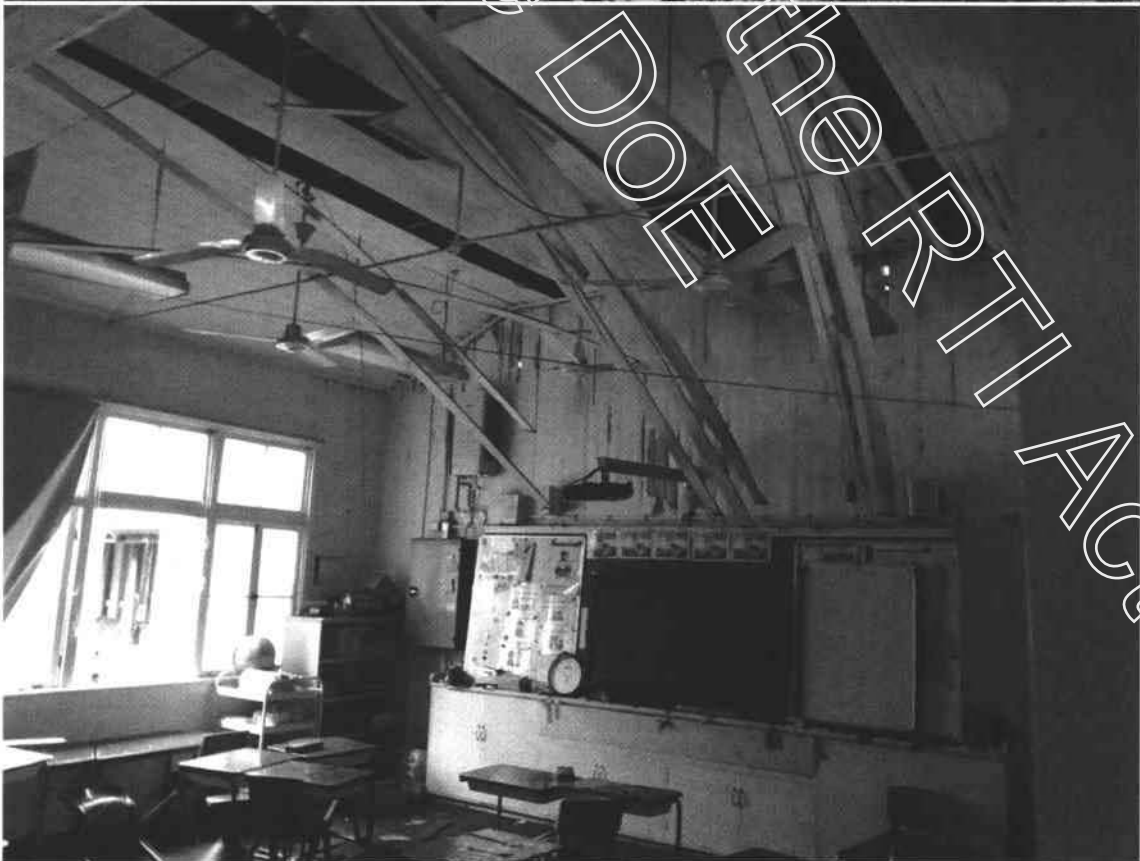




Morningside
SS.

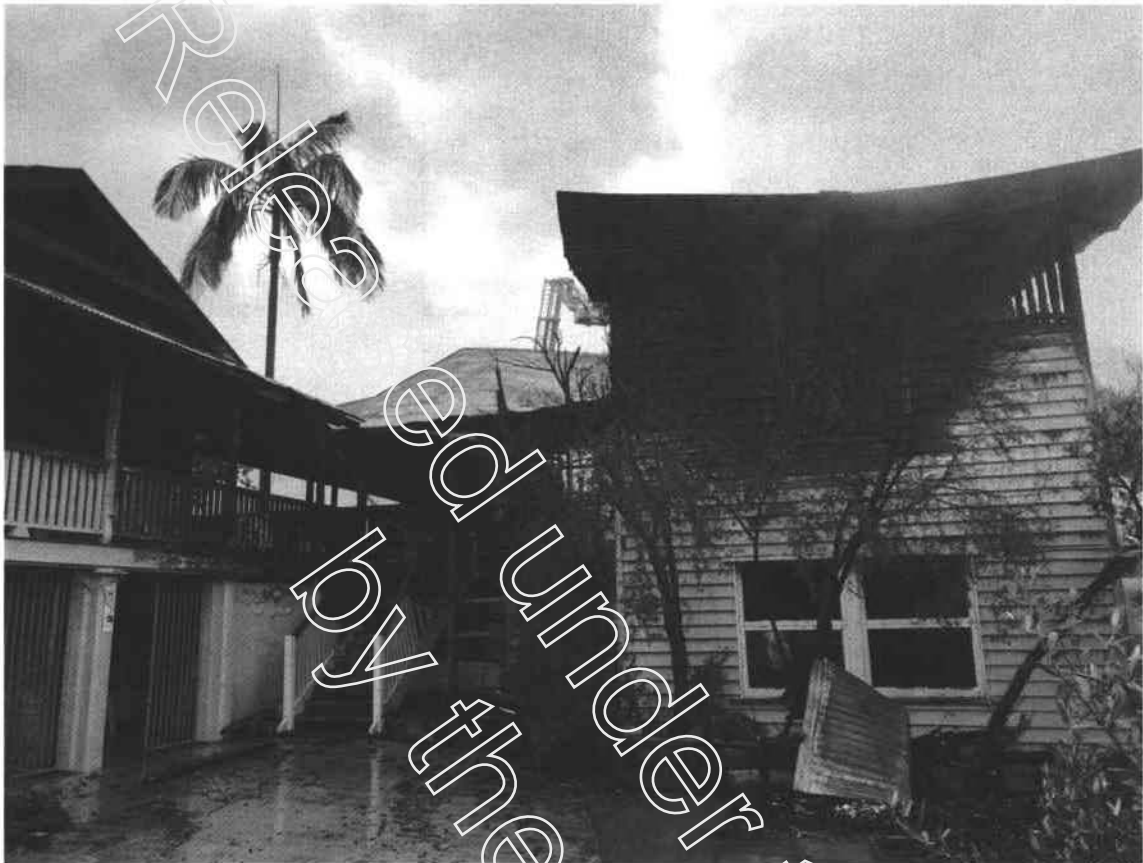




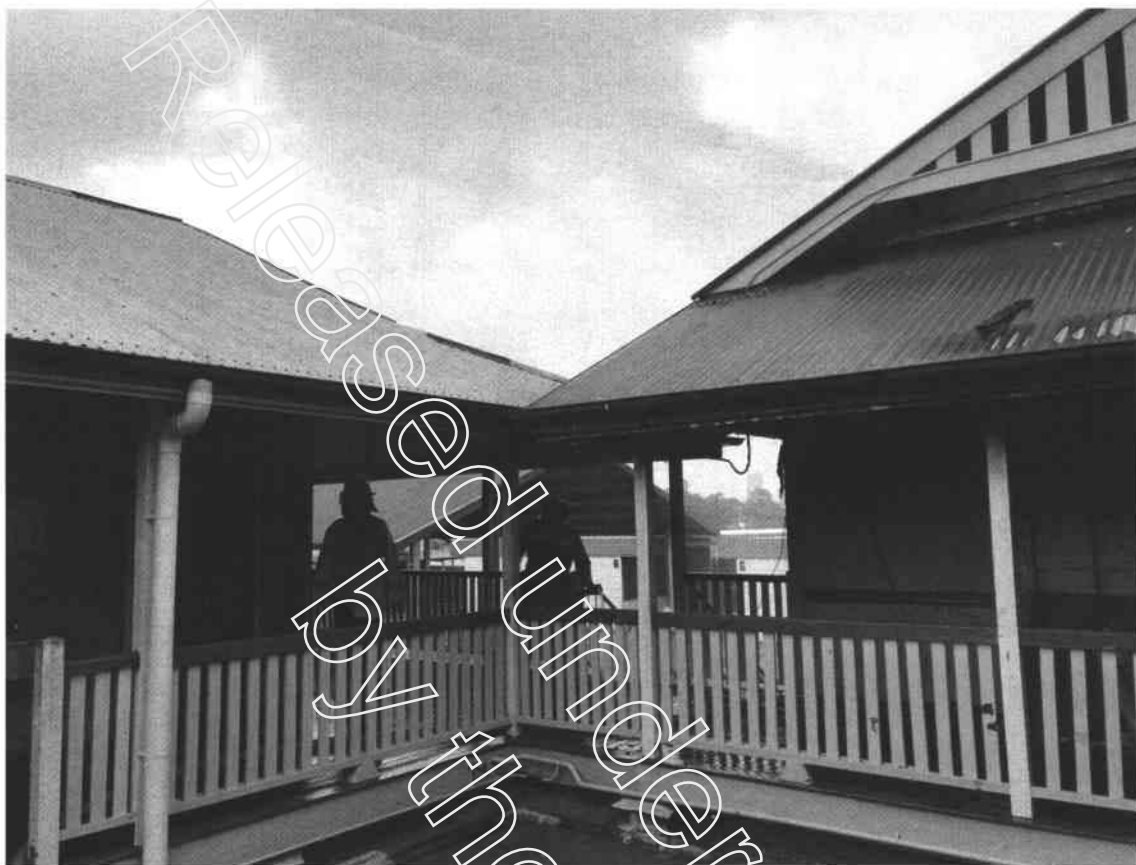


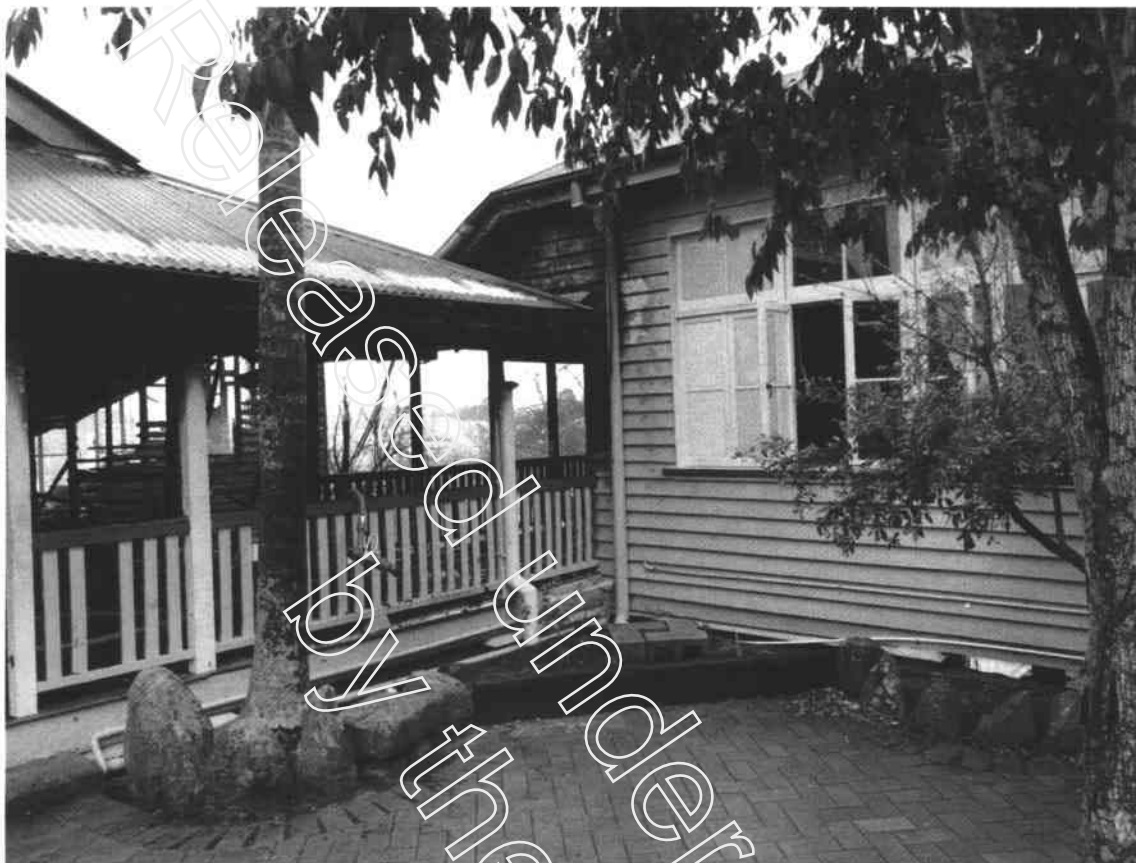






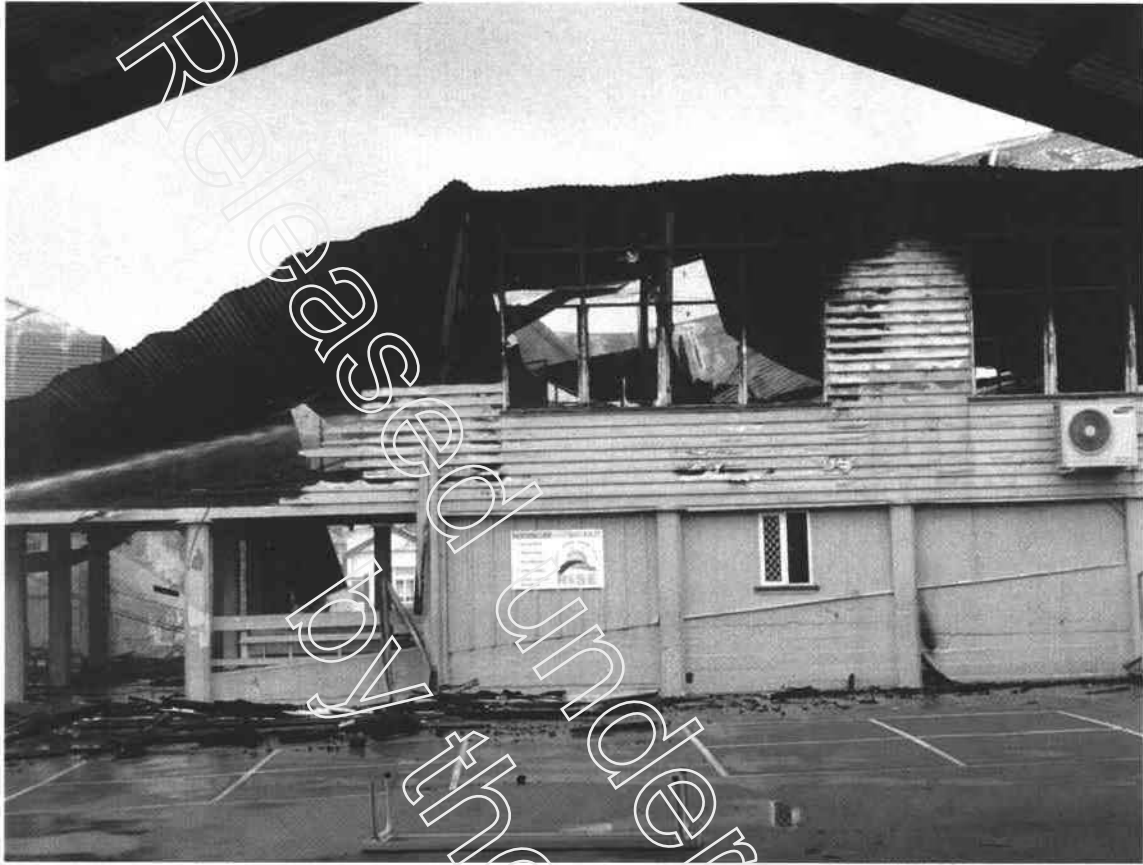


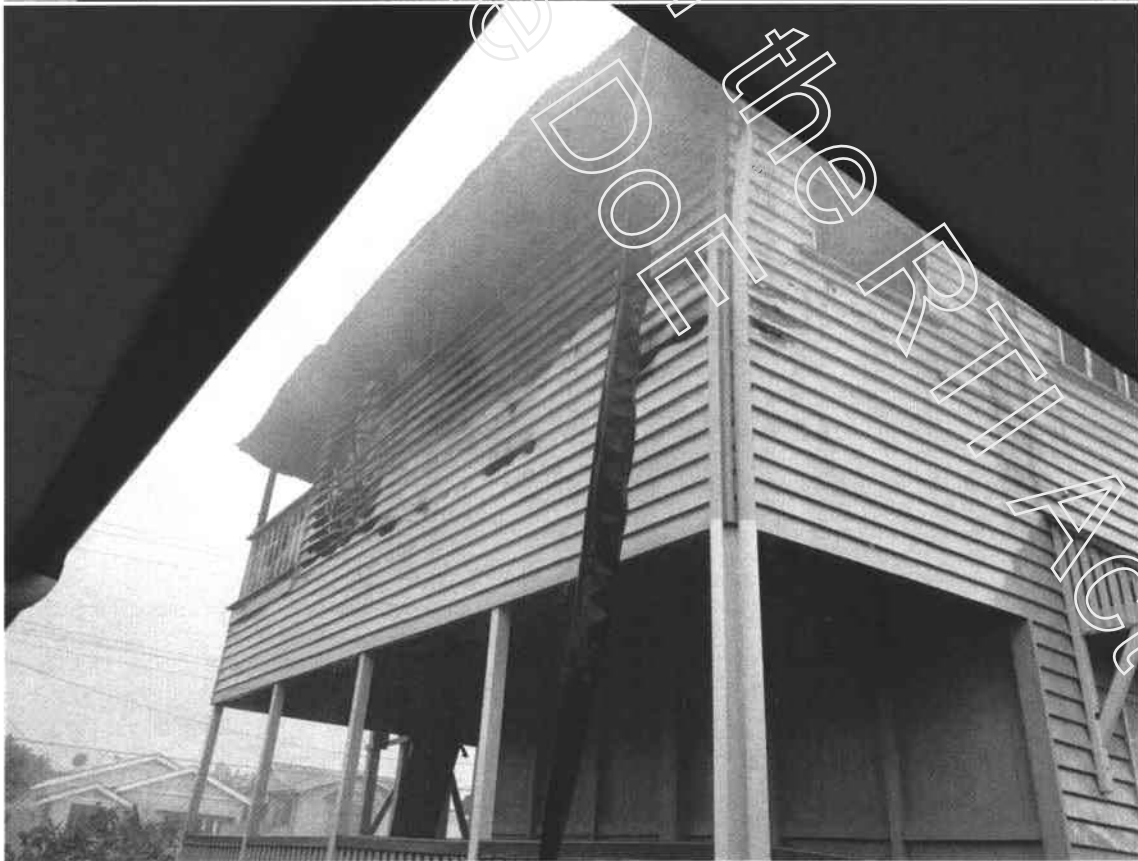
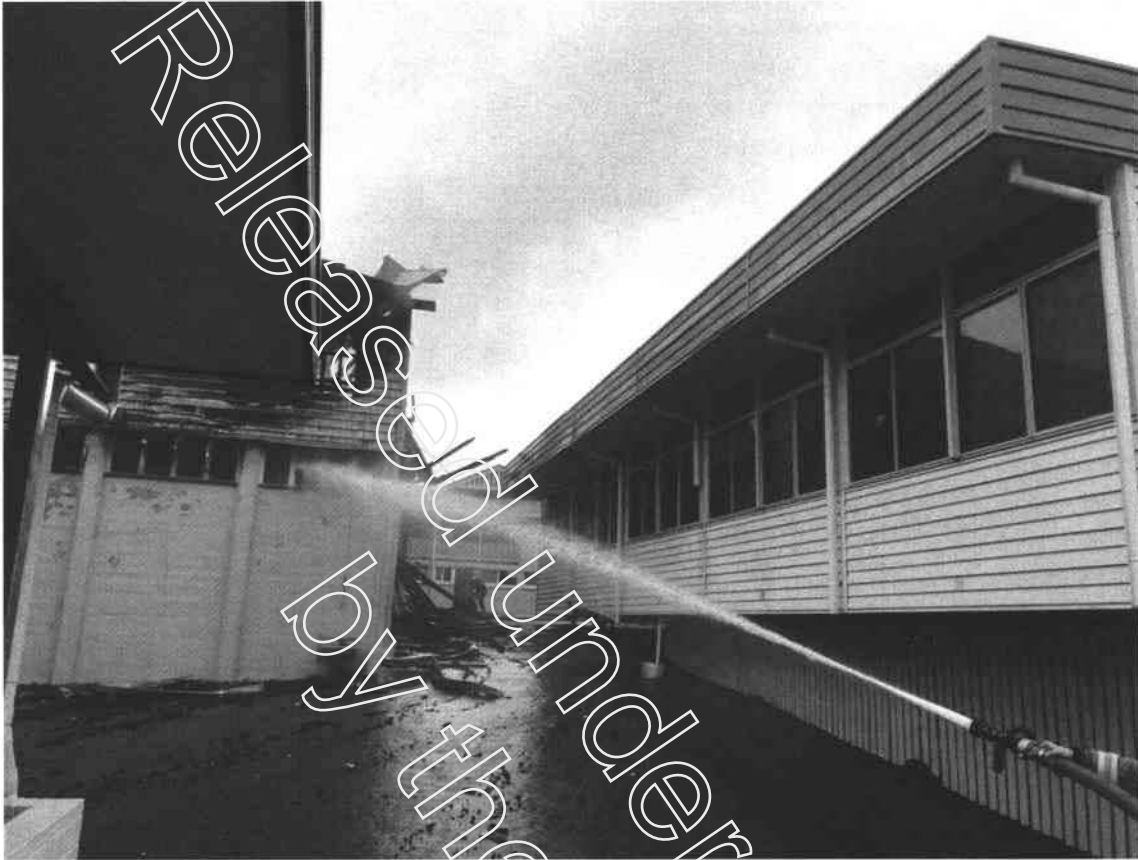




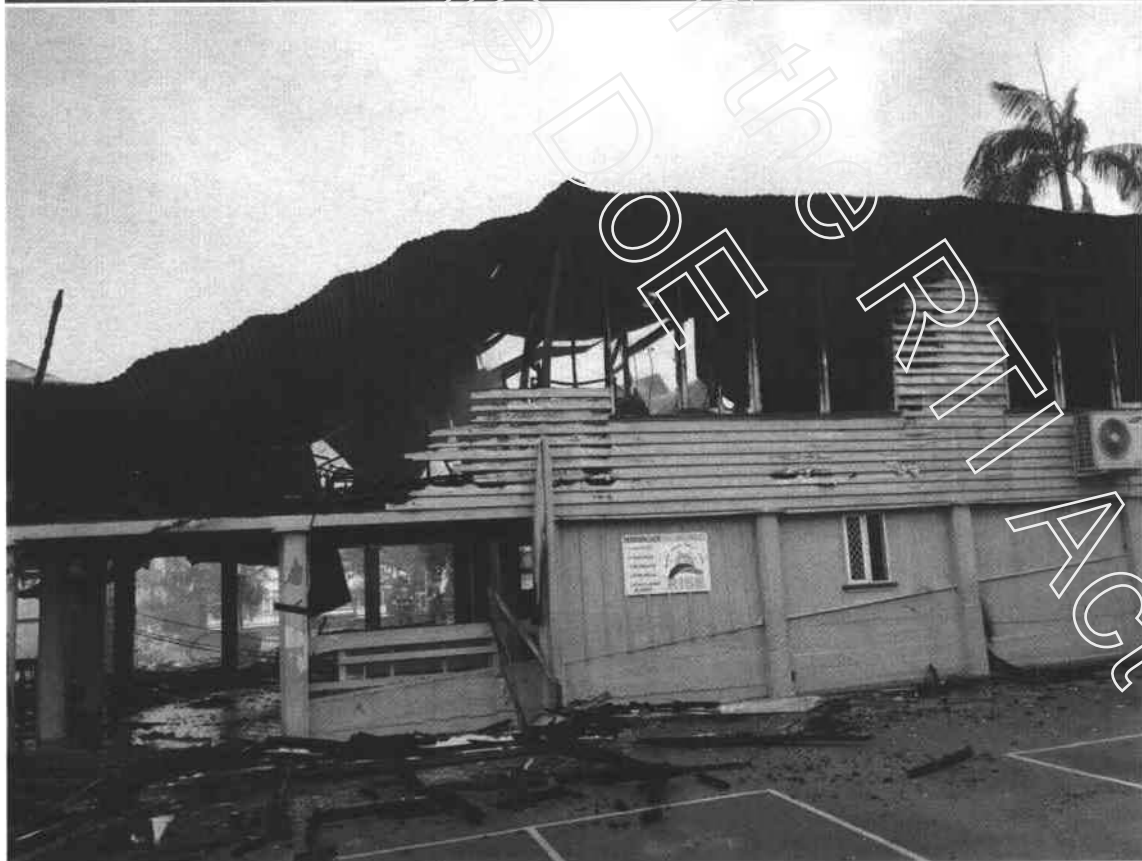






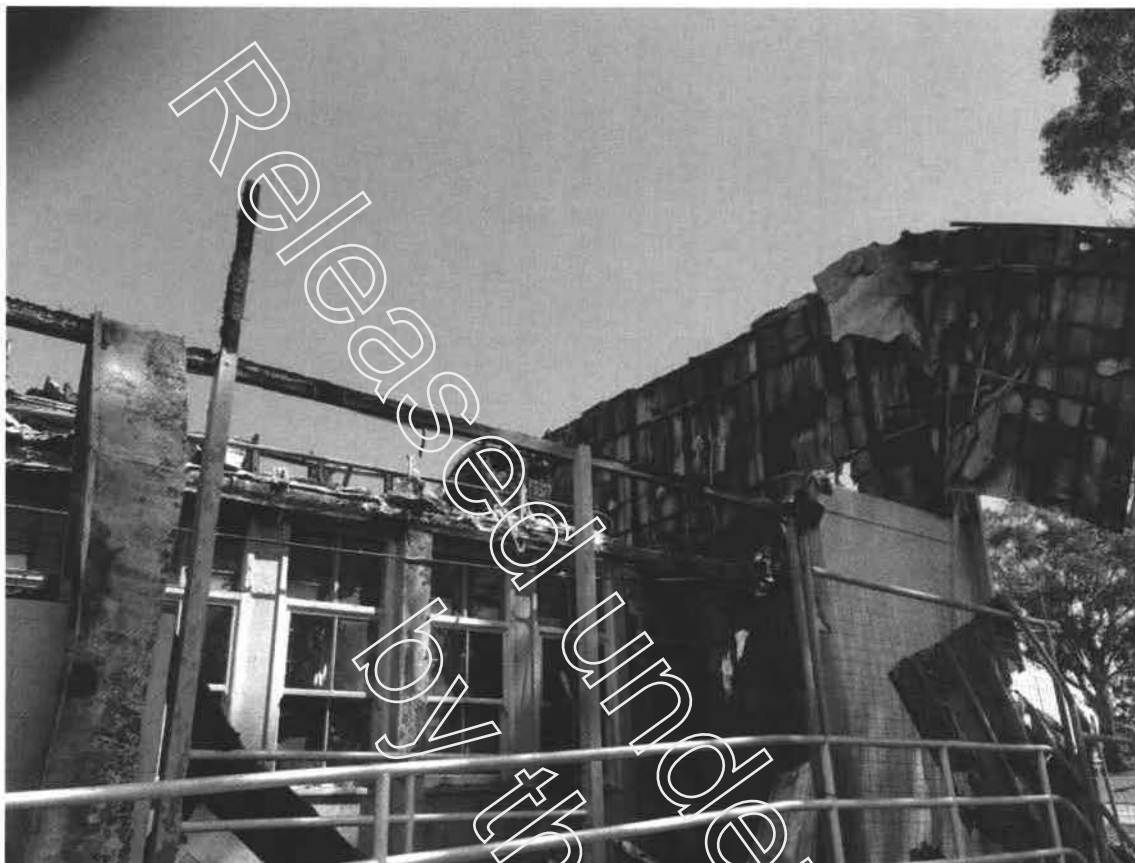




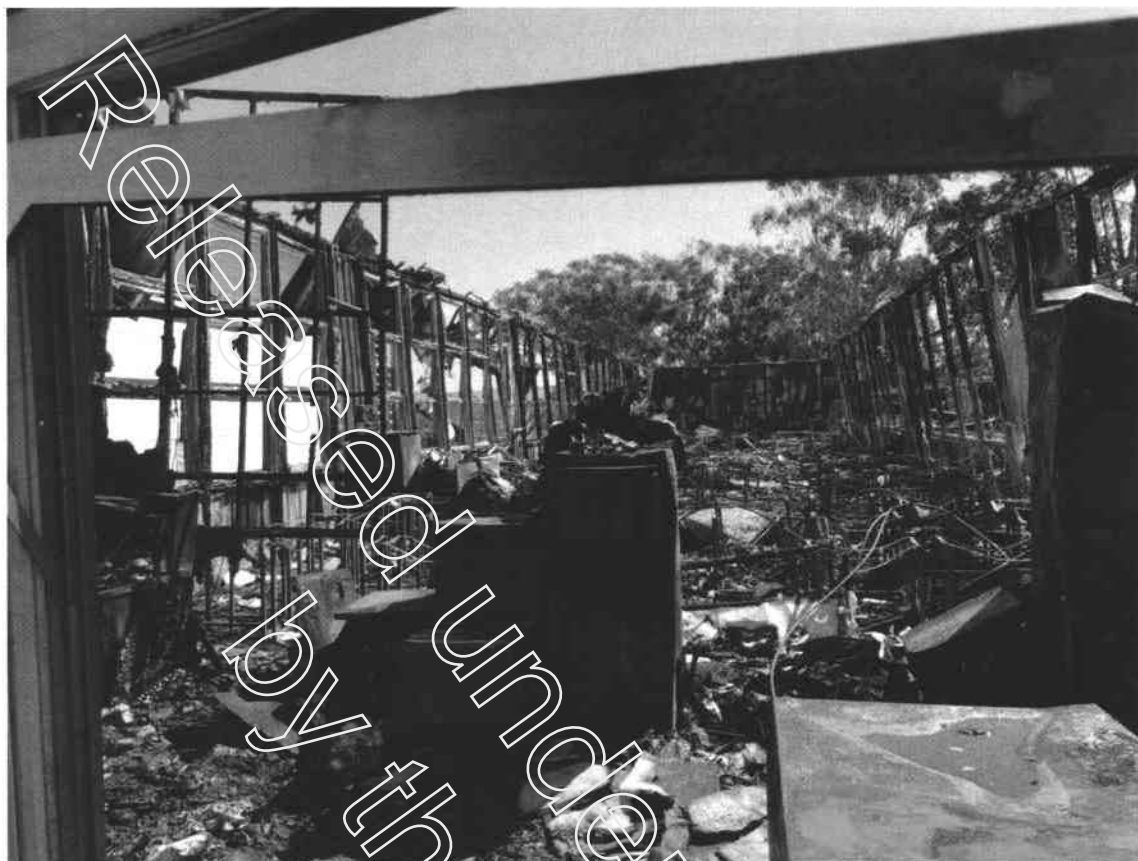




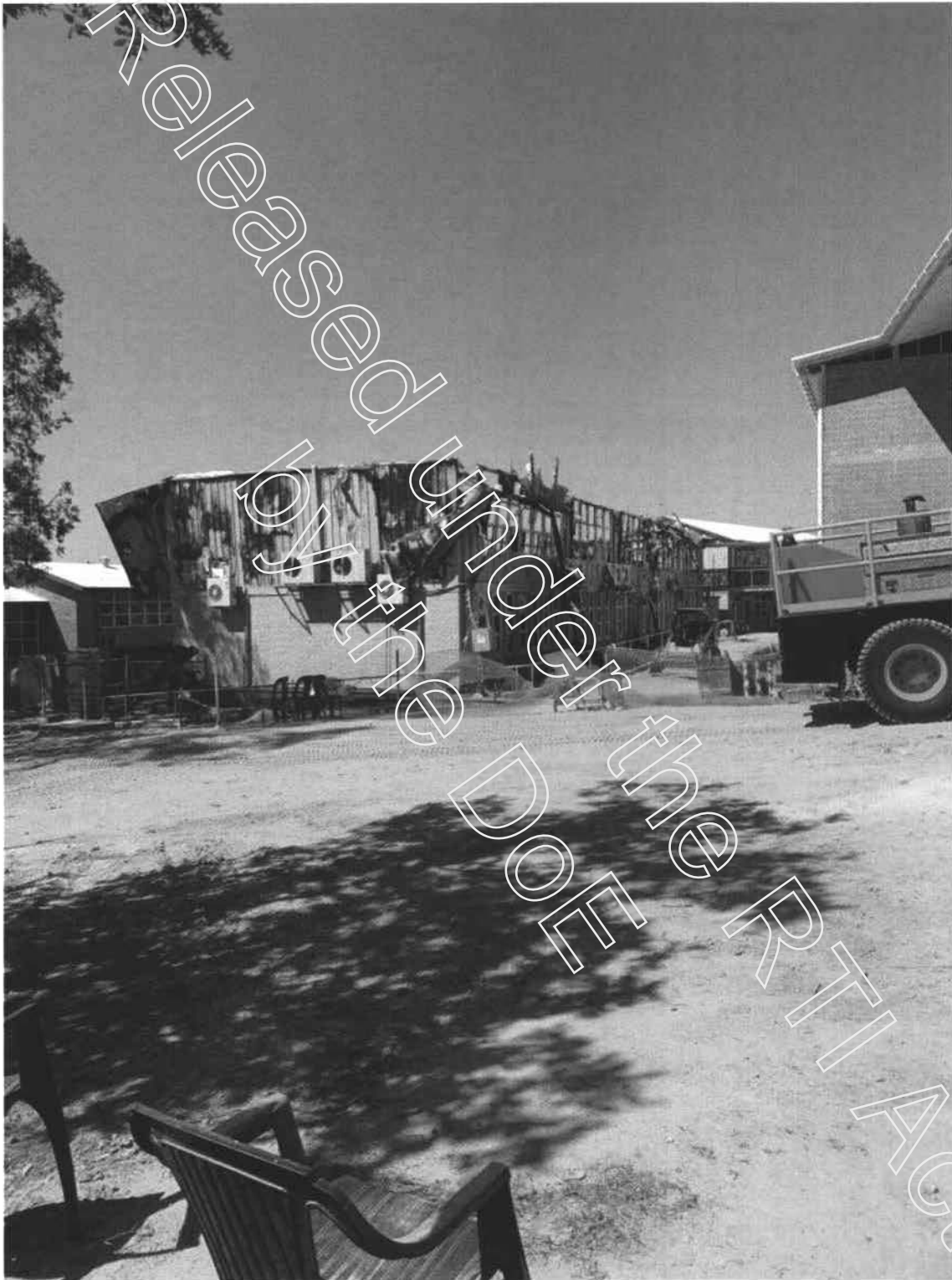




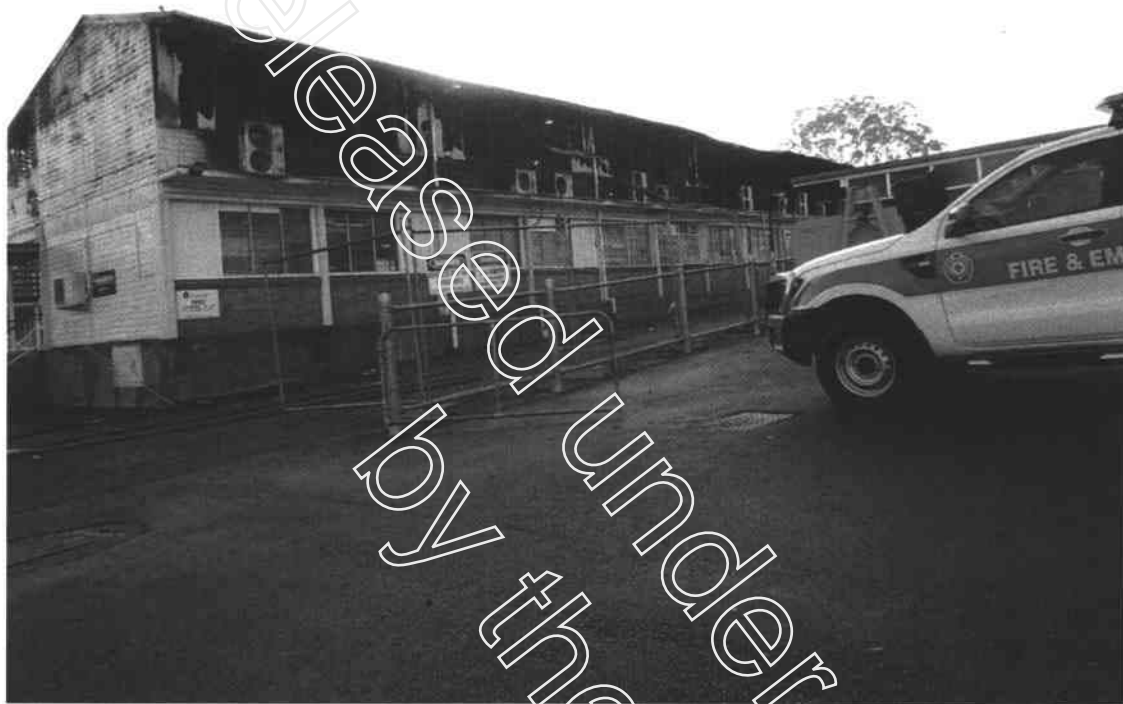
Southport
SS



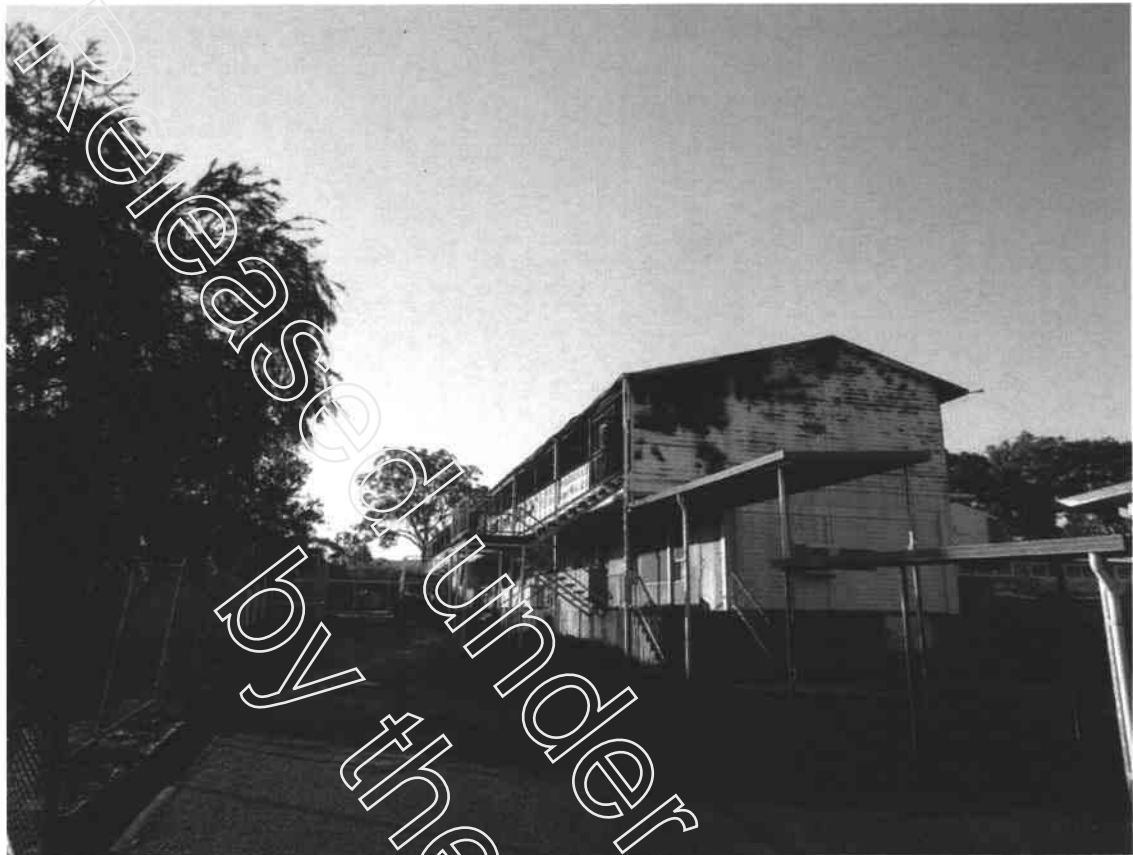








Upper Mount
Granville S.S.



Handwritten note: 2.2 Howard







