

REINFORCED CONCRETE FLOOR SLAB TO ENGINEERS DETAIL

FOOTING PLAN

FLOOR PLAN

BUILDING TYPE

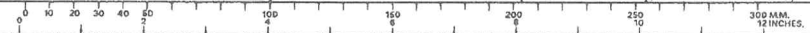


DRAWN BY KIRBY	DATE: JAN 1973	SCALE: 1/4" = 1'-0"
CHECKED: [Signature]	SHEET No. 21690	
AUTHORISED FOR ISSUE	DRAWING No. S 1596/1X	ASSISTANT UNDER SECRETARY (TECHNICAL)
SUPERVISING ARCHITECT	[Signature]	
CHIEF ARCHITECT	[Signature]	

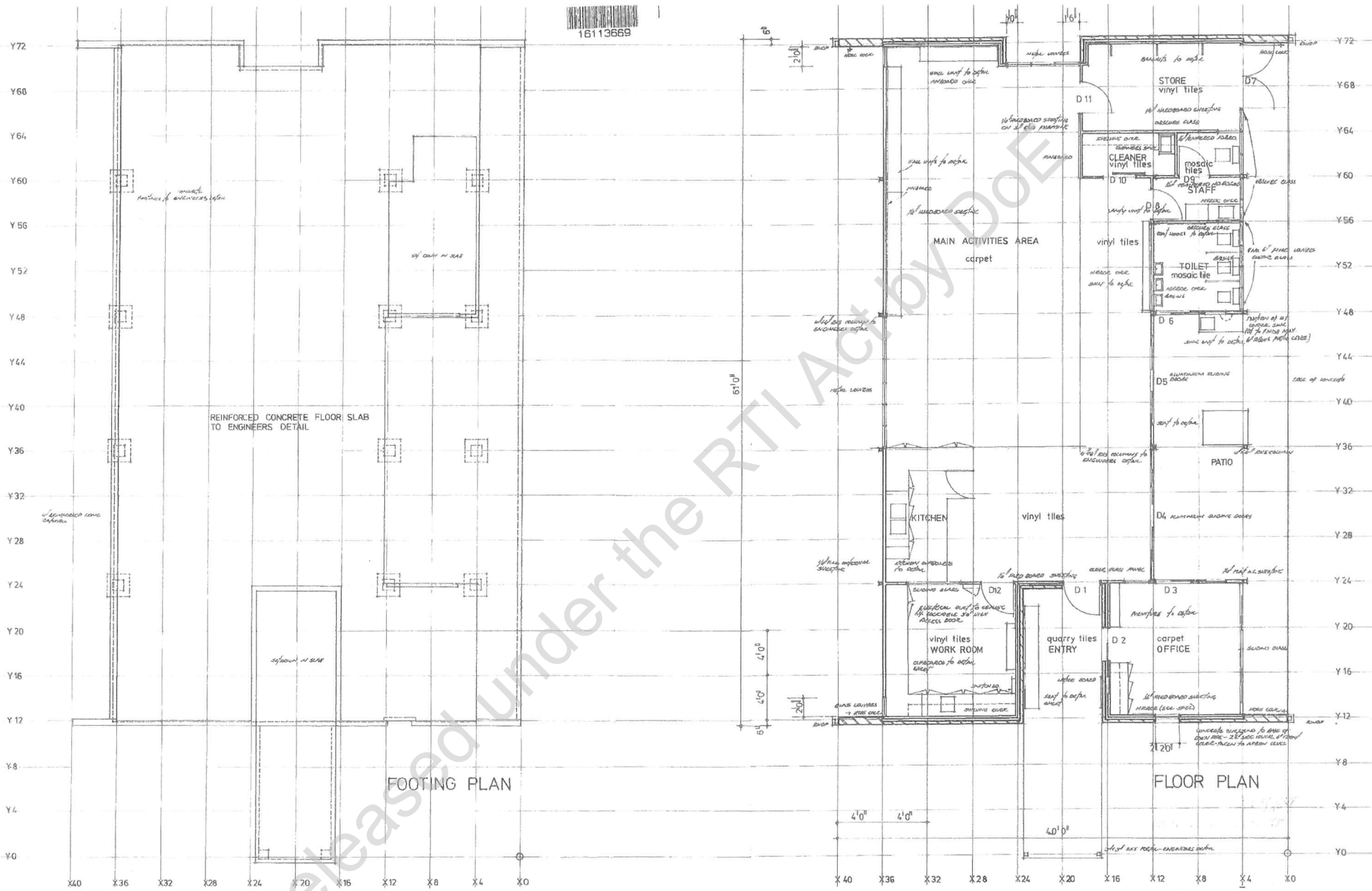
DEPARTMENT OF WORKS
ARCHITECTURAL BRANCH

State Pre-School Centre
FOOTING & FLOOR PLAN


166-33-10



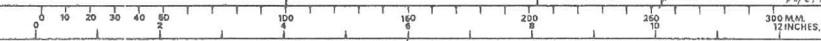
16113669



Released under the RTI Act by DOE

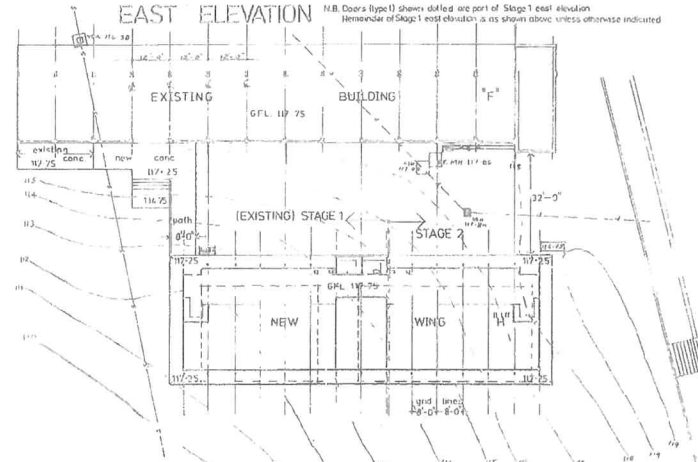
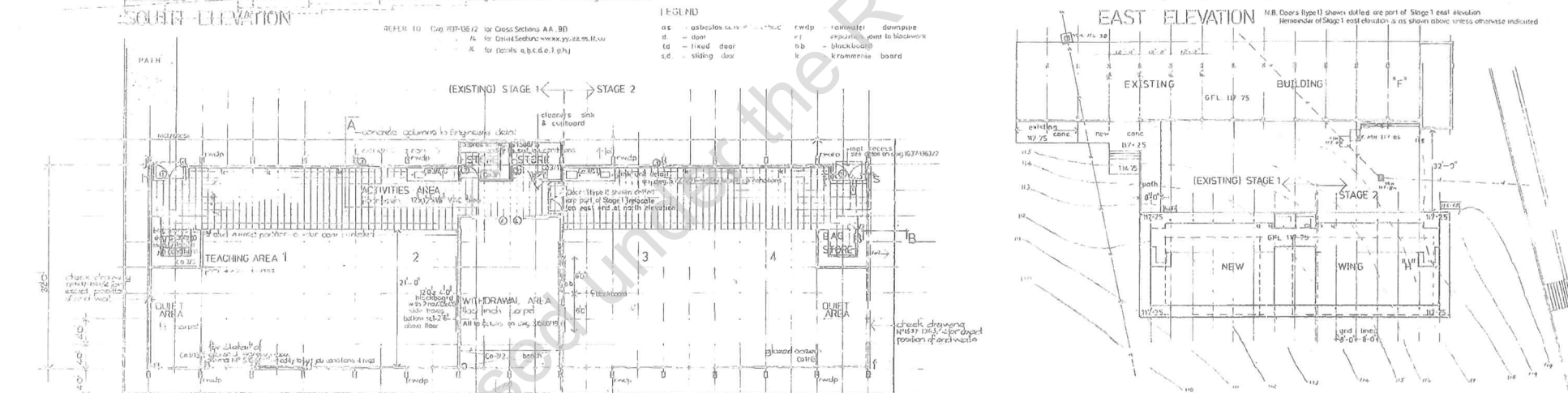
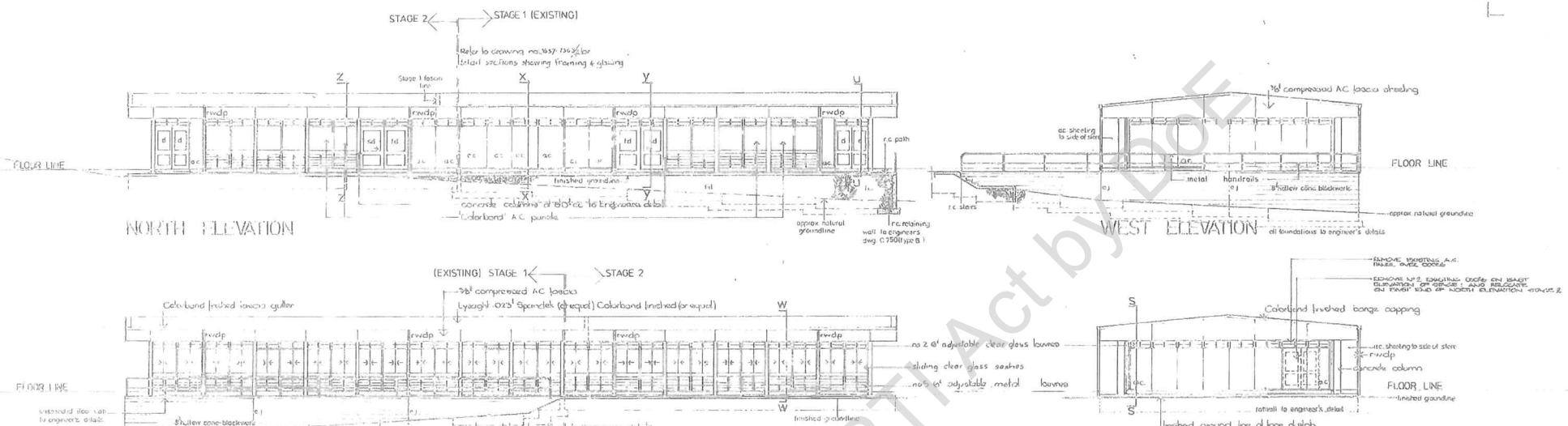
BUILDING TYPE 	DRAWN: B. KIRBY DATE: 25/11/1973	SCALE: 1/4" = 1'-0"	DEPARTMENT OF WORKS ARCHITECTURAL BRANCH
	CHECKED: <i>[Signature]</i> DATE: 12-3-79	SHEET No. 2/6/79	
	AUTHORISED FOR ISSUE		State Pre-school Centre FOOTING & FLOOR PLAN
	SUPERVISING ARCHITECT: <i>[Signature]</i> DATE: 11-2-79		
	CHIEF ARCHITECT: <i>[Signature]</i> DATE: 11-2-79		

167-33-10



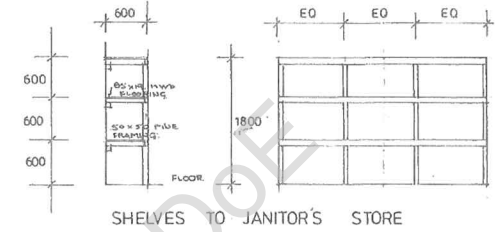
A1

11048565

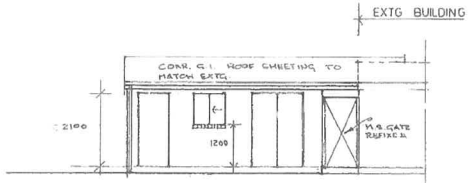


PART SITE PLAN
 SCALE 1" = 20' - 0"
 REF DWG 1637-1A FOR FULL SITE PLAN
 Site has generally been levelled with platform ready for construction
 Carry out final trimming etc.

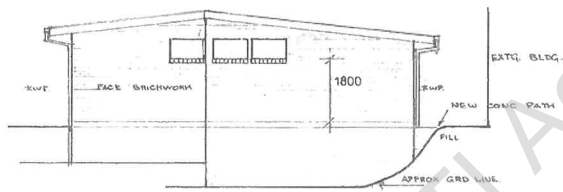
SCHEDULE OF JOB DRAWINGS Architectural Drawings: 1637-1A, 1637-1B, 1637-1C, 1637-1D, 1637-1E, 1637-1F, 1637-1G, 1637-1H, 1637-1I, 1637-1J, 1637-1K, 1637-1L, 1637-1M, 1637-1N, 1637-1O, 1637-1P, 1637-1Q, 1637-1R, 1637-1S, 1637-1T, 1637-1U, 1637-1V, 1637-1W, 1637-1X, 1637-1Y, 1637-1Z Structural Drawings: 1637-2A, 1637-2B, 1637-2C, 1637-2D, 1637-2E, 1637-2F, 1637-2G, 1637-2H, 1637-2I, 1637-2J, 1637-2K, 1637-2L, 1637-2M, 1637-2N, 1637-2O, 1637-2P, 1637-2Q, 1637-2R, 1637-2S, 1637-2T, 1637-2U, 1637-2V, 1637-2W, 1637-2X, 1637-2Y, 1637-2Z Mechanical Drawings: 1637-3A, 1637-3B, 1637-3C, 1637-3D, 1637-3E, 1637-3F, 1637-3G, 1637-3H, 1637-3I, 1637-3J, 1637-3K, 1637-3L, 1637-3M, 1637-3N, 1637-3O, 1637-3P, 1637-3Q, 1637-3R, 1637-3S, 1637-3T, 1637-3U, 1637-3V, 1637-3W, 1637-3X, 1637-3Y, 1637-3Z Electrical Drawings: 1637-4A, 1637-4B, 1637-4C, 1637-4D, 1637-4E, 1637-4F, 1637-4G, 1637-4H, 1637-4I, 1637-4J, 1637-4K, 1637-4L, 1637-4M, 1637-4N, 1637-4O, 1637-4P, 1637-4Q, 1637-4R, 1637-4S, 1637-4T, 1637-4U, 1637-4V, 1637-4W, 1637-4X, 1637-4Y, 1637-4Z Plumbing Drawings: 1637-5A, 1637-5B, 1637-5C, 1637-5D, 1637-5E, 1637-5F, 1637-5G, 1637-5H, 1637-5I, 1637-5J, 1637-5K, 1637-5L, 1637-5M, 1637-5N, 1637-5O, 1637-5P, 1637-5Q, 1637-5R, 1637-5S, 1637-5T, 1637-5U, 1637-5V, 1637-5W, 1637-5X, 1637-5Y, 1637-5Z Other Drawings: 1637-6A, 1637-6B, 1637-6C, 1637-6D, 1637-6E, 1637-6F, 1637-6G, 1637-6H, 1637-6I, 1637-6J, 1637-6K, 1637-6L, 1637-6M, 1637-6N, 1637-6O, 1637-6P, 1637-6Q, 1637-6R, 1637-6S, 1637-6T, 1637-6U, 1637-6V, 1637-6W, 1637-6X, 1637-6Y, 1637-6Z		ARCHITECT IN ASSOCIATION HURME & WEBSTER PTY. LTD. ARCHITECTS QUEEN & ALBERT STS. BRISBANE	PRINCIPAL 	DRAWN P.J. CHECKED [Signature] AUTHORISED FOR ISSUE SUPERVISING ARCHITECT [Signature] CHIEF ARCHITECT [Signature]	DATE 1-11-73 SCALE 1/16" = 1'-0" SHEET N° 1 DRAWING N° 1637-1461/1 ASSISTANT (UNDER SUPERVISOR'S TECHNICAL)	DEPARTMENT OF WORKS ARCHITECTURAL BRANCH MOOROOKA STATE SCHOOL PROPOSED CLASSROOM BLOCK stage 2
---	--	--	----------------------	--	--	--



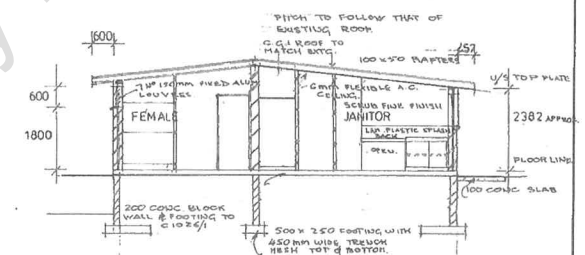
SHELVES TO JANITOR'S STORE



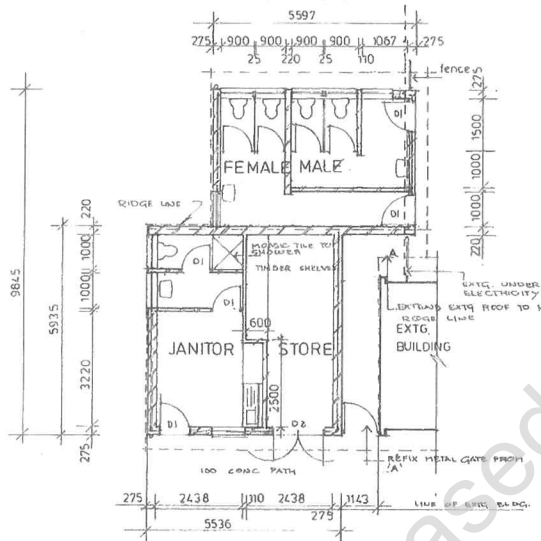
EAST ELEVATION



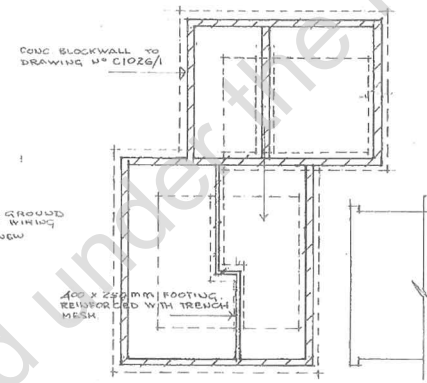
SOUTH ELEVATION



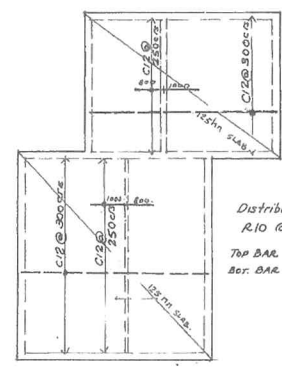
SECTION



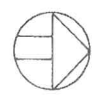
FLOOR PLAN



FOUNDATION PLAN



Distribution bars
R10 @ 300 c/c.
TOP BAR SHOWN
BOT. BAR SHOWN



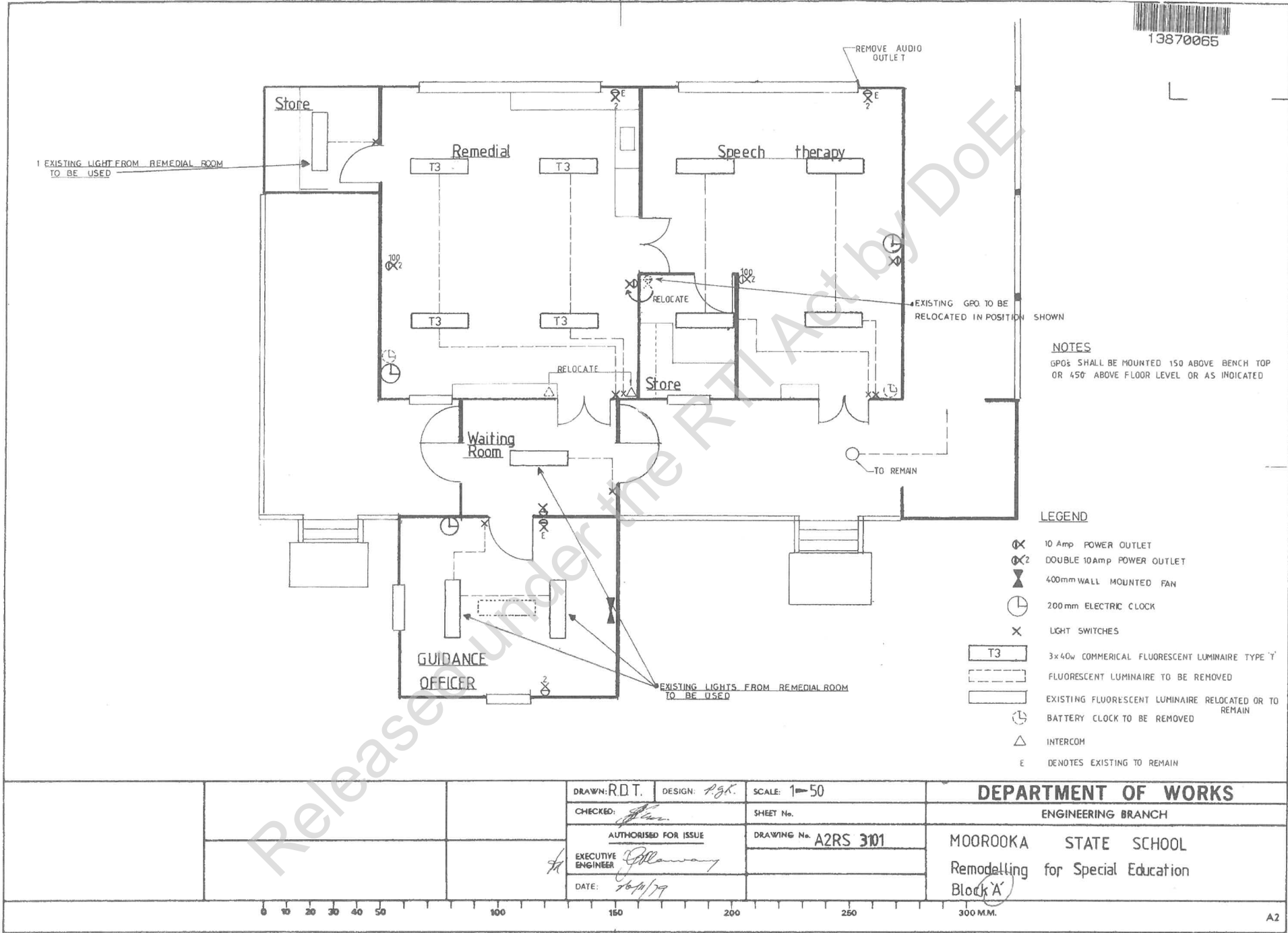
ARCHITECTS IN ASSOCIATION
EDWARD W. Mc MAHON PTY. LTD.,
80 LYTTON RD. EAST BRISBANE

DRAWN:	DATE:	SCALE: 1:100
CHECKED:		SHEET No.
AUTHORISED FOR ISSUE		DRAWING No. 1637-1506/1
SUPERVISING ARCHITECT		ASSISTANT UNDER-SECRETARY (TECHNICAL)
CHIEF ARCHITECT		

DEPARTMENT OF WORKS
ARCHITECTURAL BRANCH
MOOROOKA STATE SCHOOL
NEW JANITORS RM. AND STORE
NEW TOILETS TO SWIMMING POOL



13870065



NOTES
 GPOs SHALL BE MOUNTED 150 ABOVE BENCH TOP OR 450 ABOVE FLOOR LEVEL OR AS INDICATED

- LEGEND**
- ⊗ 10 Amp POWER OUTLET
 - ⊗2 DOUBLE 10Amp POWER OUTLET
 - ⊗ 400mm WALL MOUNTED FAN
 - ⌚ 200mm ELECTRIC CLOCK
 - × LIGHT SWITCHES
 - T3 3x40w COMMERCIAL FLUORESCENT LUMINAIRE TYPE 'T'
 - FLUORESCENT LUMINAIRE TO BE REMOVED
 - EXISTING FLUORESCENT LUMINAIRE RELOCATED OR TO REMAIN
 - ⌚ BATTERY CLOCK TO BE REMOVED
 - △ INTERCOM
 - E DENOTES EXISTING TO REMAIN

DRAWN: R.D.T. DESIGN: P.B.K. SCALE: 1=50
 CHECKED: *[Signature]* SHEET No. _____
 AUTHORIZED FOR ISSUE DRAWING No. A2RS 3101
 EXECUTIVE ENGINEER *[Signature]*
 DATE: 10/11/79

DEPARTMENT OF WORKS
 ENGINEERING BRANCH
 MOOROOKA STATE SCHOOL
 Remodelling for Special Education
 Block A

0 10 20 30 40 50 100 150 200 250 300 M.M.

A2