

Right to Information Application

340/5/4063

Infrastructure Services Response

(a) separately for each financial year from 2015 to present, the number of break and enter incidents at schools and the total cost of claims made by schools as a result of break and enter incidents:

Total break and enters reported through Queensland Police Service - Protective Services		
Financial Year	2015/2016	2016/2017 (up to and including 31 December 2016)
Number of Incidents	525	243

Resource Replacement Scheme (RRS) claims for losses as a result of break and enters		
Financial Year	2015/2016	2016/2017 (up to and including 31 December 2016)
Number of Claims	162	63
Costs	\$400,189	\$59,186

- Based on claims made to the Resource Replacement Scheme as at 31 December 2016.
- Not all break and enters result in a claim being made to the Resource Replacement Scheme.
- Schools have 3 months from the date of the incident to lodge a claim.

(b) separately for each financial year from 2015 to present, the number of vandalism/malicious damage incidents at schools and the total costs of claims made by schools as a result of incidents of vandalism/malicious damage:

Total vandalism and graffiti incidents reported through Queensland Police Service - Protective Services		
Financial Year	2015/2016	2016/2017 (up to and including 31 December 2016)
Number of Incidents	684	462

Resource Replacement Scheme (RRS) claims for losses as a result of vandalism/malicious damage		
Financial Year	2015/2016	2016/2017 (up to and including 31 December 2016)
Number of work requests	19	11
Costs	\$330,197	\$81,681

- Based on claims made to the Resource Replacement Scheme as at 31 December 2016.
- Not all intentional damage is repaired/rectified resulting in a claim being made to the Resource Replacement Scheme and therefore total rectification costs are not collected centrally.
- School officers may repair/rectify some intentional damage particularly graffiti damage which may be cleaned off or painted over by cleaners or grounds staff.

- (c) *separately for each financial year from 2015 to present, the number of arson incidents at schools, broken down by the number of reported cases and major arson incidents, and the cost of claims made by schools as a result of arson incidents:*

Total arson incidents at schools reported through Queensland Police Service – Protective Services		
Financial Year	2015/2016	2016/2017 (up to and including 31 December 2016)
Number of Incidents	17	4
Major incidents (over \$2000)	9	1
Costs	\$1,389,930	\$700,000

- Costs based on data available as at 31 December 2016 and includes estimates until final costs are determined.

- (d) *separately for each financial year from 2015 to present, the total number of incidents causing loss or damage at schools that have resulted in claims being made by schools, and the total costs of those claims:*

Total number of incidents and costs		
Financial Year	2015/2016	2016/2017 (up to and including 31 December 2016)
Number of Incidents	198	77
Total Costs	\$2,530,423	\$187,967

- (e) *The top 5 schools with the most expensive claims in the abovementioned and present as a result of vandalism/malicious damage/arson and the amount of these claims. Please include related CCTV/ video footage and photos.*

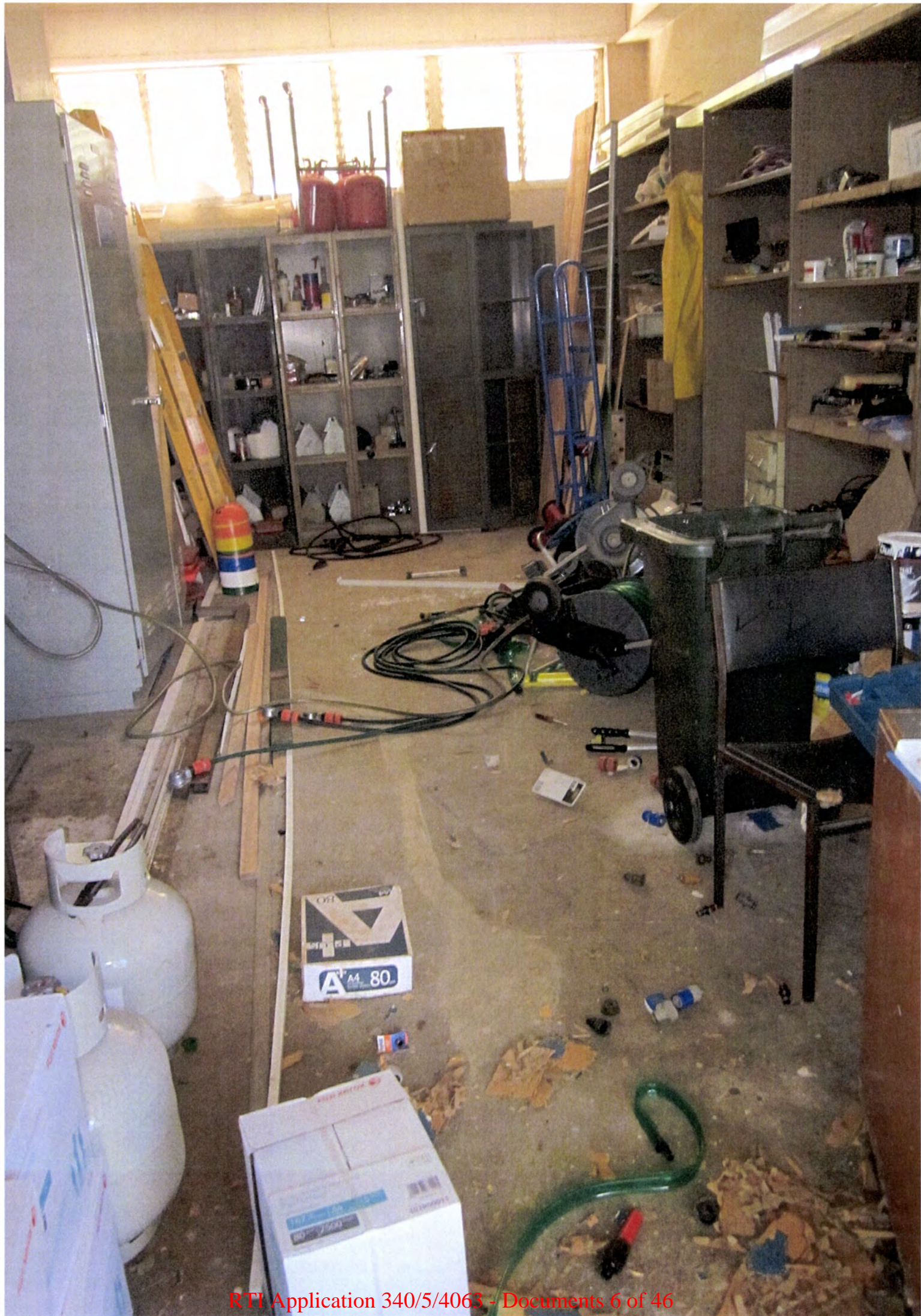
	School Name	Cost of Claim (\$)
1	Mabel Park State School	\$1,292,136
2	Barkley Highway State School	\$120,962
3	Two Mile State School	\$115,972
4	Holland Park State High School	\$113,242
5	McDowall State School	\$92,386

- Based on claims made to the Resource Replacement Scheme as at 31 December 2016 for the 2015-16 and 2016-17 financial years.
- Based on cost finalised with the Queensland Government Insurance Fund (QGIF).
- RRS database does not differentiate between fire and arson, the figures include all fire incidents.
- Schools have 3 months from the date of the incident to lodge a claim.

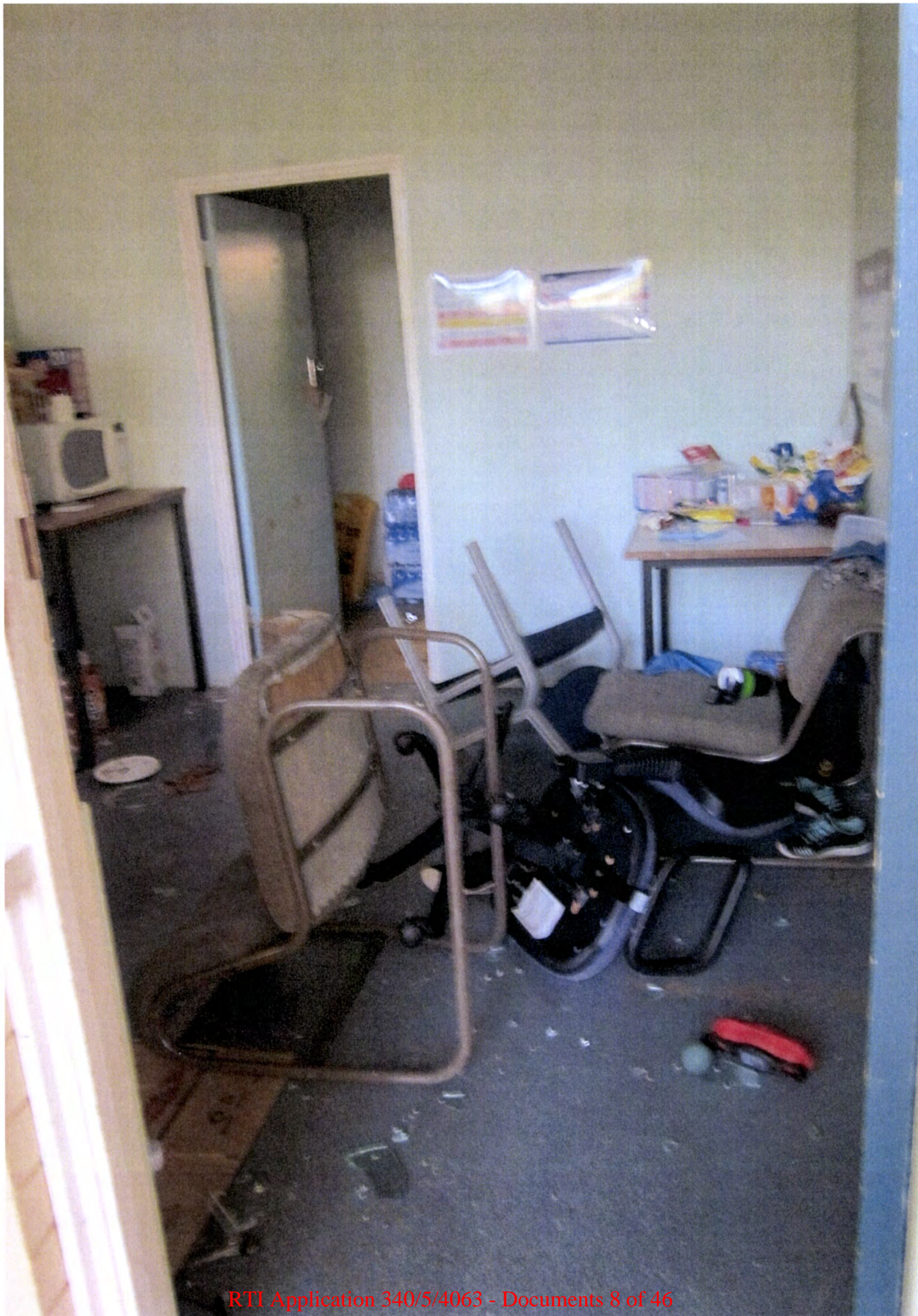


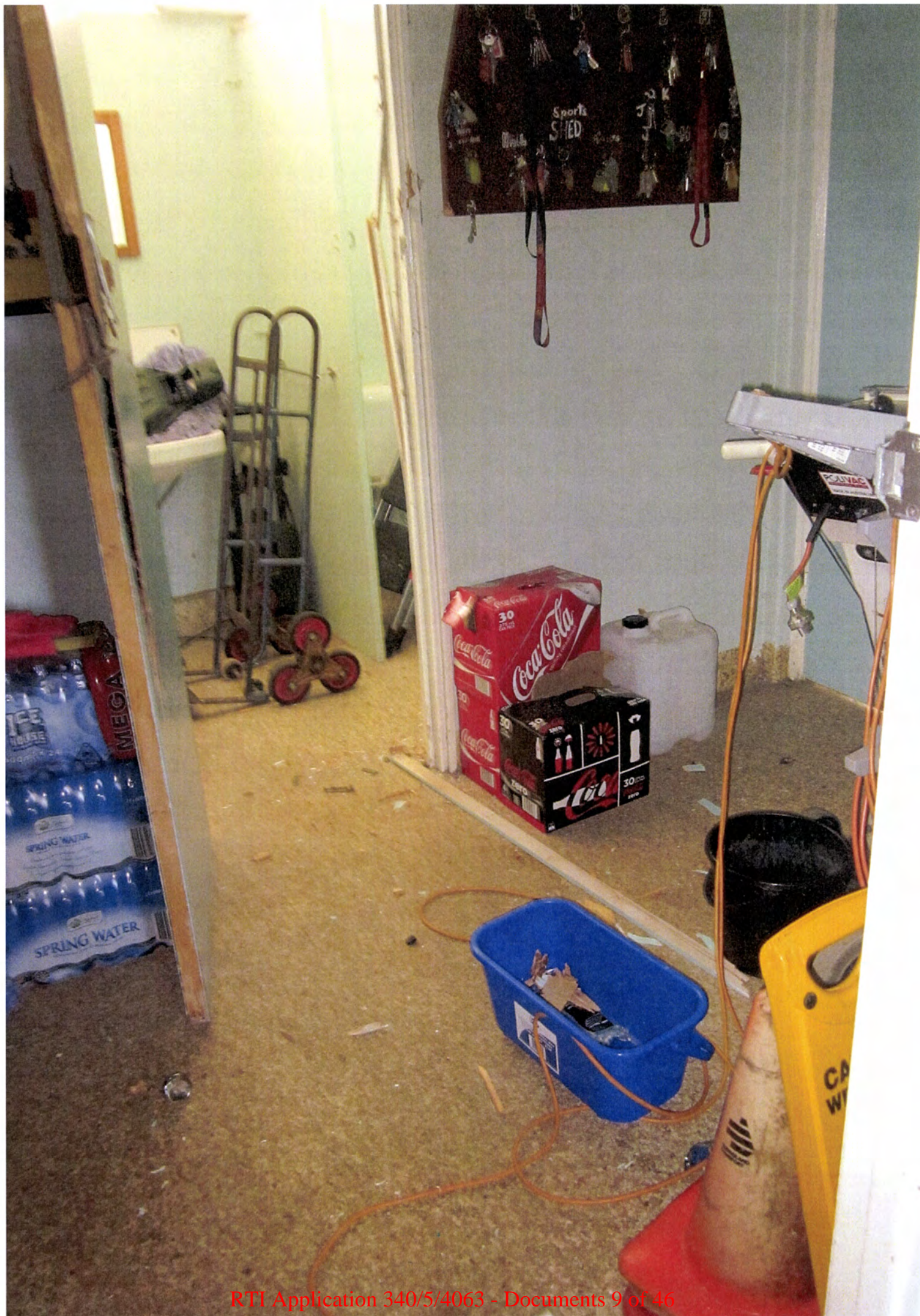






















































An aerial photograph of a park or garden. A light-colored, winding path or stream bed runs diagonally from the top left towards the bottom right. The path is bordered by green grass and several trees of varying sizes. The overall scene is captured from a high angle, looking down on the landscape.

RTI Application

340/5/4063 Documents



RTI Application 340/5/4063 -
Documents 32 of 46



FIRST ON 9NEWS FIRST ON 9NEWS





RTI Application 340/5/4063 -
Documents 35 of 46



RTI Application

340/5/4063 Documents



7
NEWS











Demolition
removal







