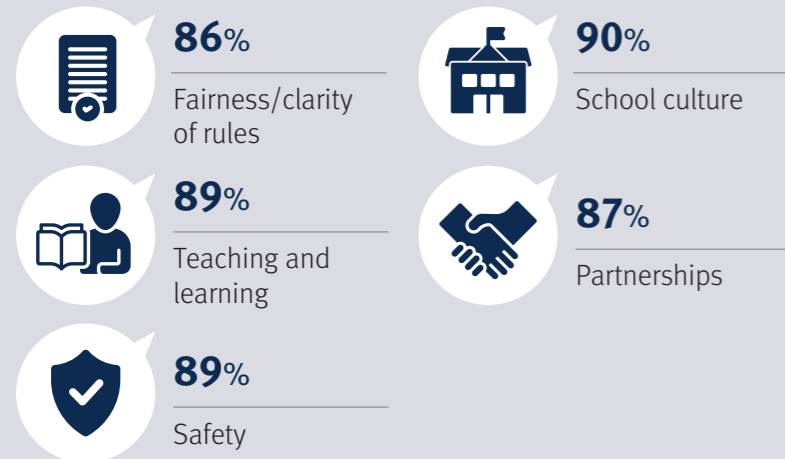


2023
Parents and caregivers
School Opinion Survey
Queensland

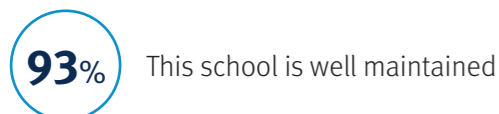
In Term 3, 2023, the Department of Education conducted its annual School Opinion Survey, inviting students, parents and staff to have their say about schooling and learning at their school.

Survey results help schools to improve. They provide an understanding of what they are doing well, and indicate areas which may require additional attention.

How we are doing in all areas
– overall level of agreement



General



For more information email SchoolOpinionSurvey@qed.qld.gov.au

DE51361.05_PC

Fairness/clarity of rules



- 92%** The expectations and rules are clear at this school
- 88%** Teachers at this school treat students fairly
- 80%** Student behaviour is well managed at this school

Teaching and learning



- 96%** Teachers at this school expect my child to do his or her best
- 88%** I understand how my child is assessed at this school
- 89%** Teachers at this school provide my child with useful feedback about his or her schoolwork
- 86%** My child is interested in their schoolwork
- 89%** My child is making good progress at this school
- 86%** My child's learning needs are being met at this school

Partnerships

- 89%** This school works with me to support my child's learning
- 93%** I can talk to my child's teachers about my concerns
- 91%** Staff at this school are responsive to my enquiries
- 86%** This school keeps me well informed
- 93%** Staff at this school are approachable
- 78%** This school asks for my input
- 81%** This school takes parents' opinions seriously

Safety

-  **88%** My child feels safe at this school
-  **91%** Teachers at this school are interested in my child's wellbeing

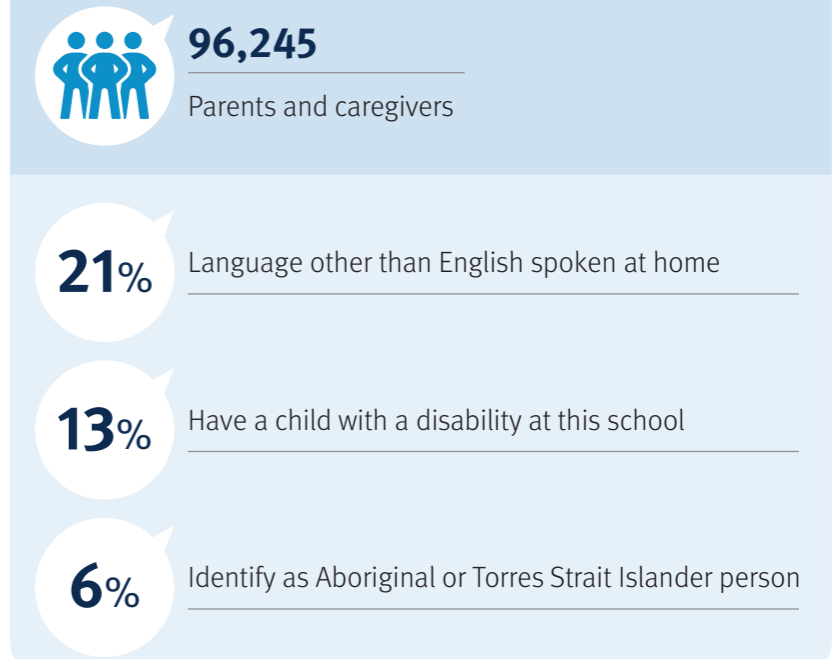
School culture

- 89%** My child likes being at this school
- 89%** Teachers at this school motivate my child to learn
- 89%** This school has a strong sense of community
- 94%** This school celebrates student achievements
- 88%** This school looks for ways to improve
- 91%** This is a good school
- 88%** This school fosters respectful relationships among all students
- 90%** This school treats students equally, regardless of gender



Parents and caregivers were asked general questions about their child's school and learning experiences to assist schools to identify areas for future improvement.

Who completed the survey



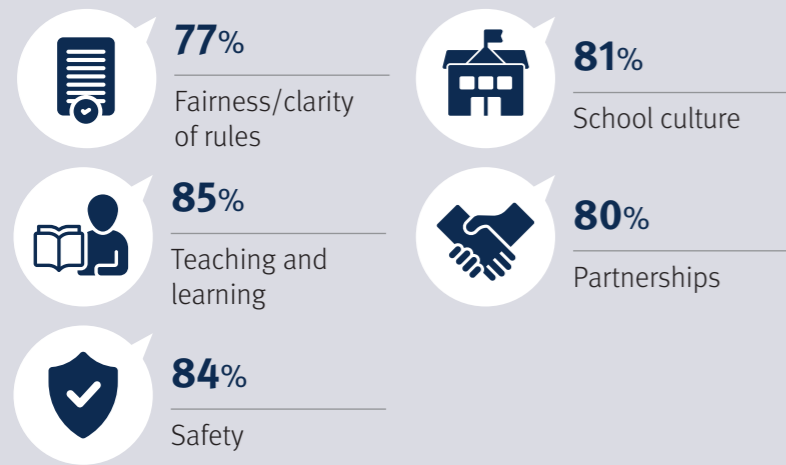
This survey was emailed to all families where an email address was available. It was open between 24 July and 18 August 2023. As survey content and methodology changed substantially in 2021, caution should be used when comparing with survey data prior to 2021.

2023 Students School Opinion Survey Queensland

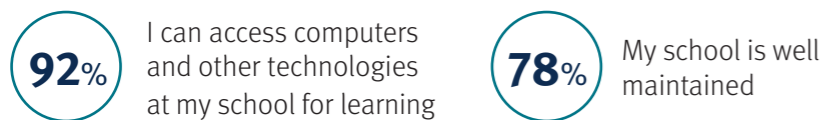
In Term 3, 2023, the Department of Education conducted its annual School Opinion Survey, inviting students, parents and staff to have their say about schooling and learning at their school.

Survey results help schools to improve. They provide an understanding of what they are doing well, and indicate areas which may require additional attention.

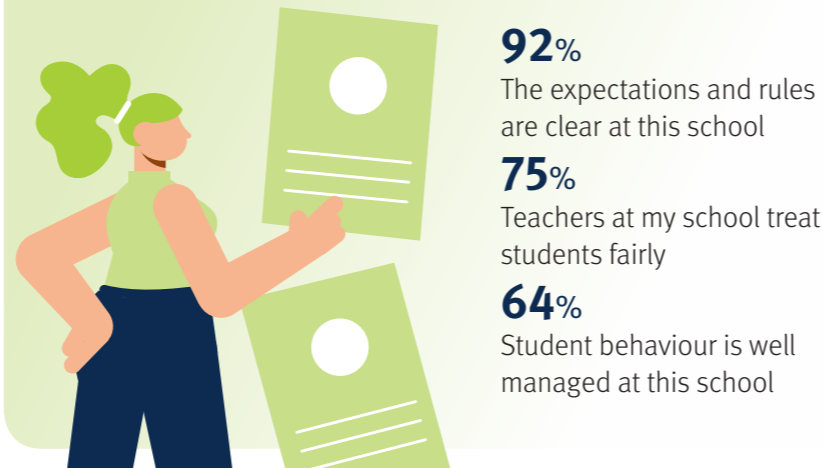
How we are doing in all areas – overall level of agreement



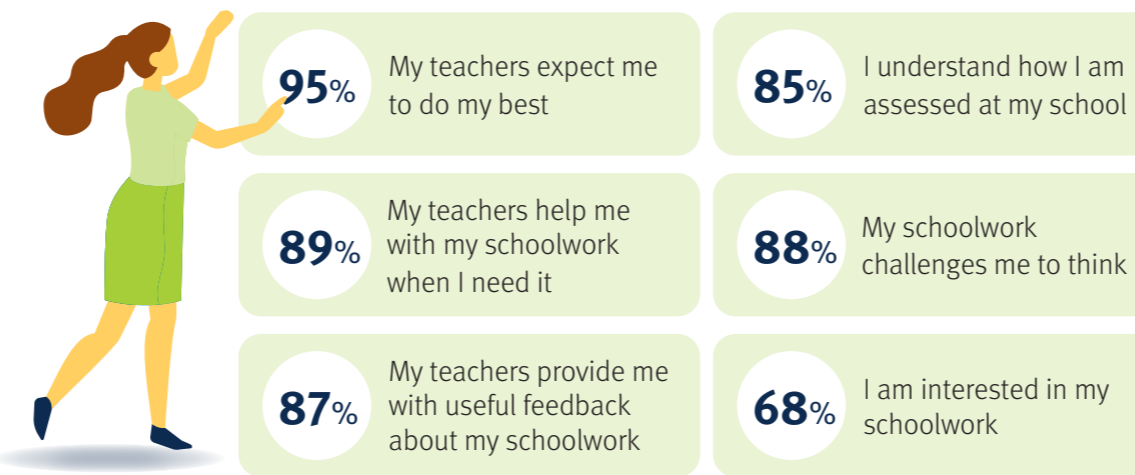
General



Fairness/clarity of rules



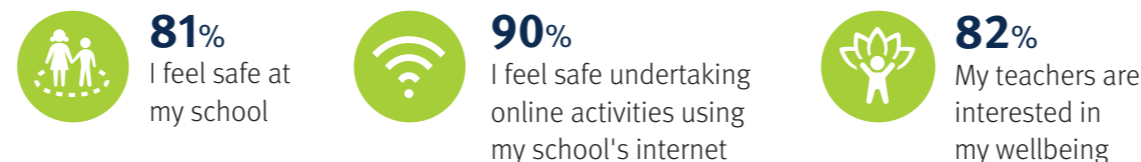
Teaching and learning



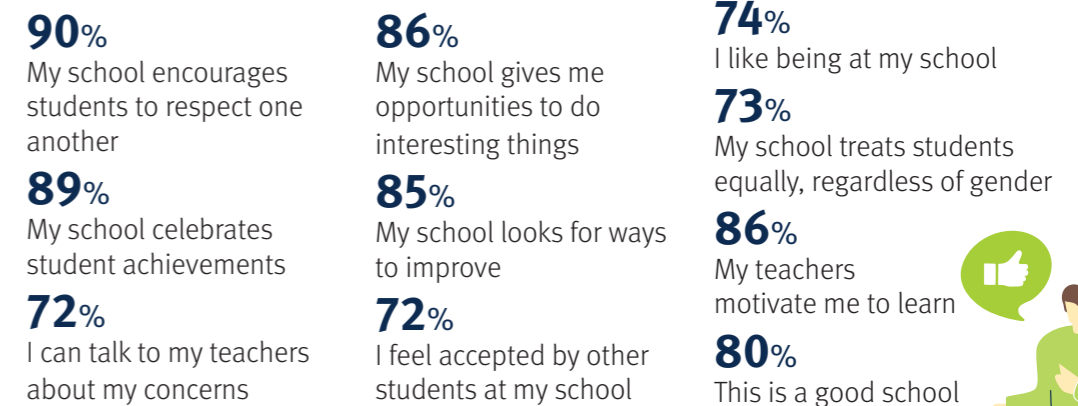
Partnerships



Safety

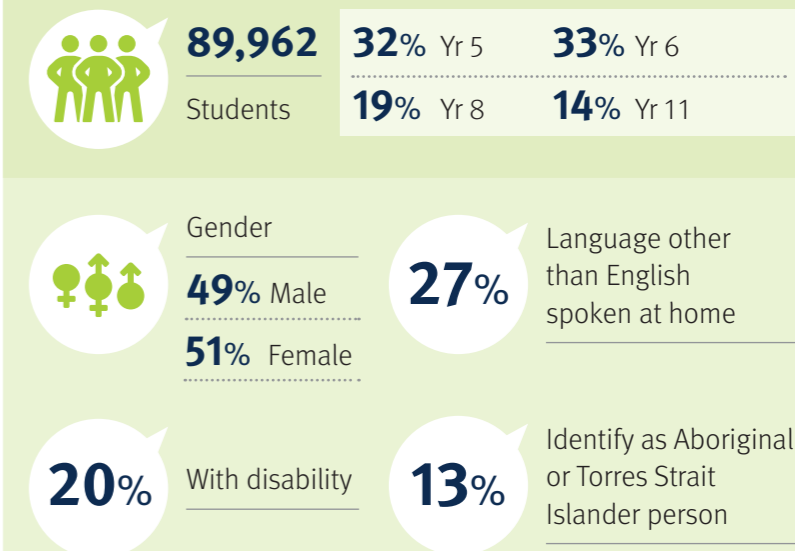


School culture



Students were asked general questions about their school and learning experiences to assist schools to identify areas for future improvement.

Who completed the survey



**based on 2023 NCCD data
totals may not equal 100% as demographic questions are optional

This survey was emailed to all students in year levels 5, 6, 8, and 11. It was open between 24 July and 18 August 2023. As survey content and methodology changed substantially in 2021, caution should be used when comparing with survey data prior to 2021.

For more information email SchoolOpinionSurvey@qed.qld.gov.au

2023
Students at Special Schools
School Opinion Survey
Queensland

In Term 3, 2023, the Department of Education conducted its annual School Opinion Survey, inviting students, parents and staff to have their say about schooling and learning at their school.

Survey results help schools to improve. They provide an understanding of what they are doing well, and indicate areas which may require additional attention.



Students were asked general questions about their school and learning experiences to assist schools to identify areas for future improvement.



Who completed the survey

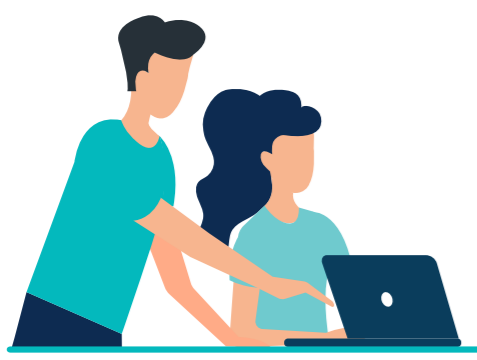
724
Students

Gender
65% Male
32% Female

**totals may not equal 100% as demographic questions are optional*

This survey was made available to students in year levels 4 to 12, between 24 July and 18 August 2023.

- 91%** I like being at my school
- 95%** I can access computers and other technologies at my school for learning
- 92%** I feel safe at my school
- 98%** My teachers encourage me to do my best
- 93%** Teachers at my school treat students fairly
- 97%** My teachers care about me
- 94%** My school gives me opportunities to do interesting things
- 97%** My school encourages me to be involved in school activities
- 95%** I am getting a good education at my school
- 94%** This is a good school



For more information email SchoolOpinionSurvey@qed.qld.gov.au

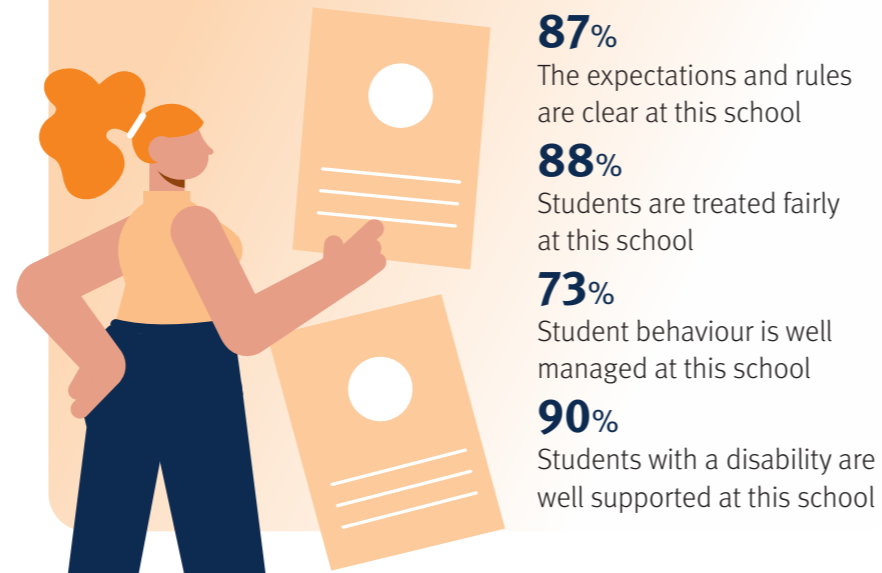
2023 Staff School Opinion Survey Queensland

In Term 3, 2023, the Department of Education conducted its annual School Opinion Survey, inviting students, parents and staff to have their say about schooling and learning at their school.

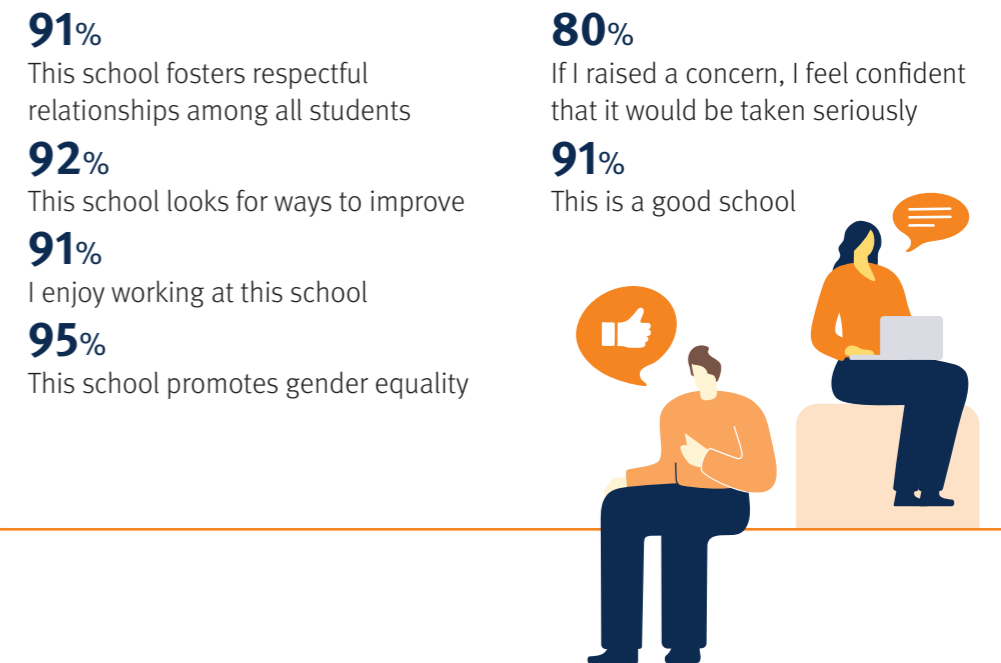
How we are doing in all areas – overall level of agreement



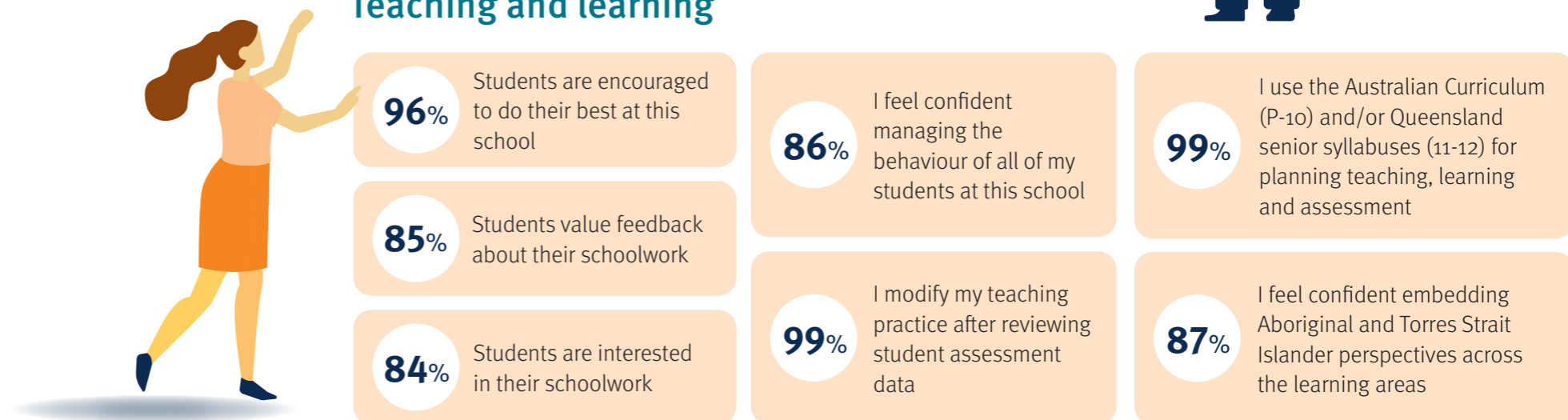
Fairness/clarity of rules



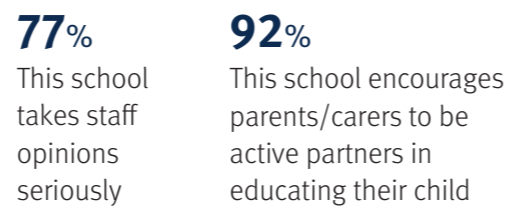
School culture



Teaching and learning



Partnerships



Safety



2023

Staff

School Opinion Survey Queensland

Staff were asked general questions about their school and teaching environment to assist schools to identify areas for future improvement.

Who completed the survey



51,792

Staff

66% Teaching

34% Non-Teaching



Gender

18% Male

78% Female

1% I use a different term



First language spoken

93% English

0.3% Aboriginal and Torres Strait Islander

4% Other

4%

With disability

3%

Identify as Aboriginal or Torres Strait Islander person

**totals may not equal 100% as demographic questions are optional*

This survey was emailed to school staff and was open between 24 July and 18 August 2023. As survey content and methodology changed substantially in 2021, caution should be used when comparing with survey data prior to 2021.

DE51361.05_SF



Staff development

81%

I receive useful feedback about my work at this school

86%

I have access to relevant professional development

85%

This school gives me opportunities to do interesting things

86%

This school encourages coaching and mentoring activities

Staff wellbeing

78%

Staff are well supported at this school

78%

The wellbeing of employees is a priority for this school

71%

I feel that staff morale is positive at this school

77%

I am supported to manage the pressures of my workload

75%

Staff are treated fairly and consistently at this school

Workplace culture

83%

This school keeps me well informed about things that are important to my work

92%

This school has an inclusive culture where diversity is valued and respected

80%

This school's culture supports people to achieve a good work-life balance

81%

This school offers flexible work arrangements

70%

I am confident that poor performance will be appropriately addressed in this school

77%

Recruitment and promotion decisions in this school are fair

78%

This school appropriately supports staff following an occupational violence/ aggressive incident

12%

Have you been subjected to bullying at this school?

1%

Have you been subjected to sexual harassment at this school?

Departmental support

89%

I feel well supported by the department to lead my school

83%

I feel well supported by the department to manage my health and wellbeing



General

88%

Information and communication technology issues at this school are resolved promptly

89%

This school is well maintained

83%

This school is well managed

83%

The school leadership team model the behaviours expected of all employees

For more information email SchoolOpinionSurvey@qed.qld.gov.au