

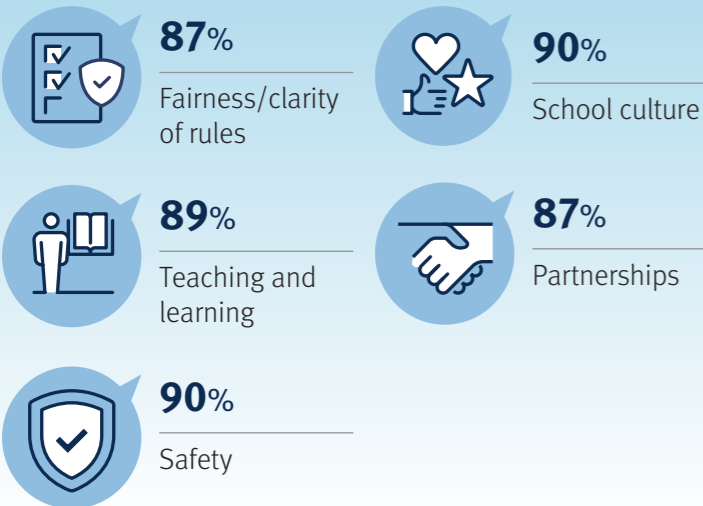
2024 School Opinion Survey Queensland

Parents and caregivers

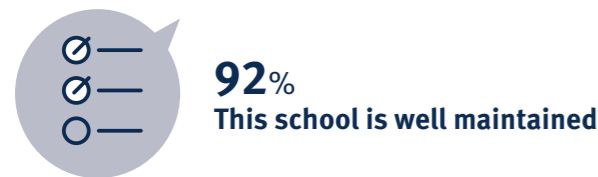
In Term 3, 2024, the Department of Education conducted its annual School Opinion Survey, inviting students, parents and staff to have their say about schooling and learning at their school.

Survey results help schools to improve. They provide an understanding of what they are doing well, and indicate areas which may require additional attention.

How we are doing in all areas — overall level of agreement

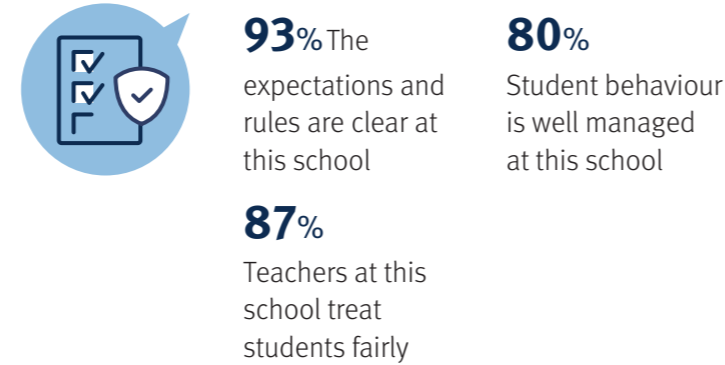


General

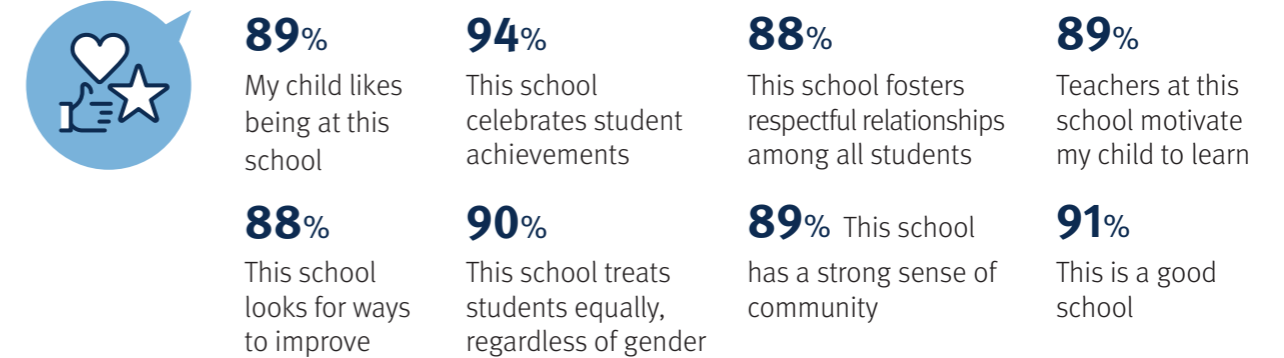


For more information email
SchoolOpinionSurvey@qed.qld.gov.au

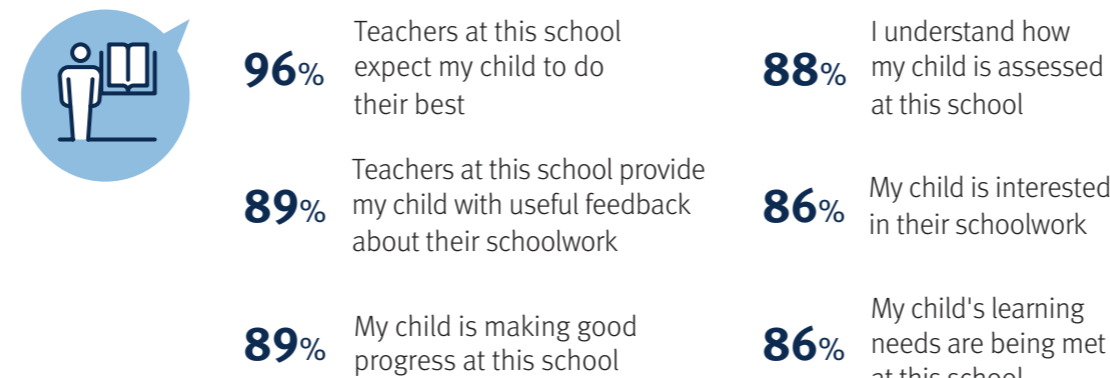
Fairness/clarity of rules



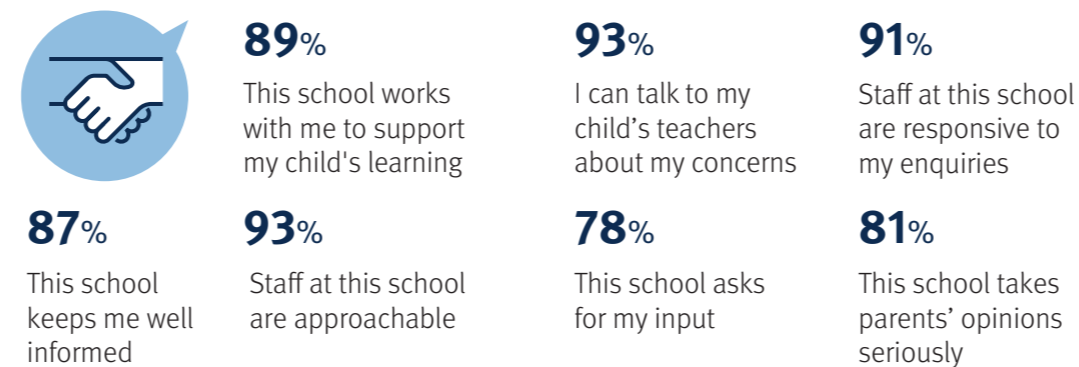
School culture



Teaching and learning



Partnerships

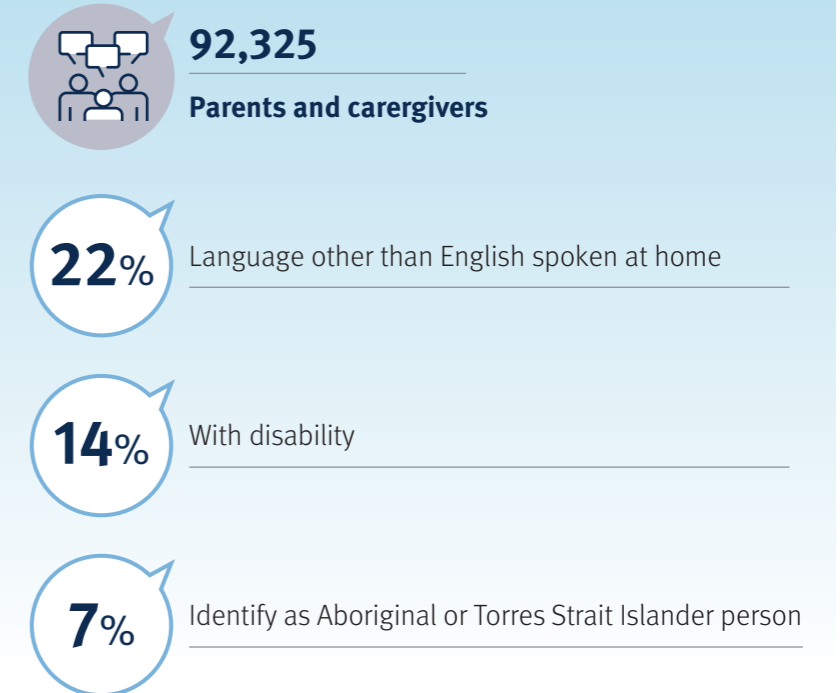


Safety



Parents and caregivers were asked general questions about their child's school and learning experiences to assist schools to identify areas for future improvement.

Who completed the survey



This survey was emailed to all families where an email address was available. It was open between 22 July to 16 August 2024. As survey content and methodology changed substantially in 2021, caution should be used when comparing with survey data prior to 2021.

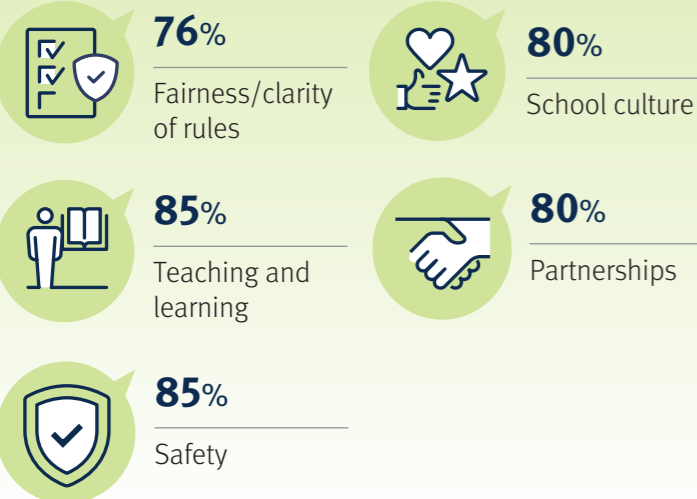
2024 School Opinion Survey Queensland

Students

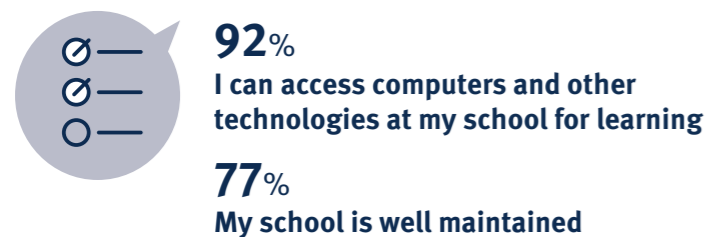
In Term 3, 2024, the Department of Education conducted its annual School Opinion Survey, inviting students, parents and staff to have their say about schooling and learning at their school.

Survey results help schools to improve. They provide an understanding of what they are doing well, and indicate areas which may require additional attention.

How we are doing in all areas — overall level of agreement

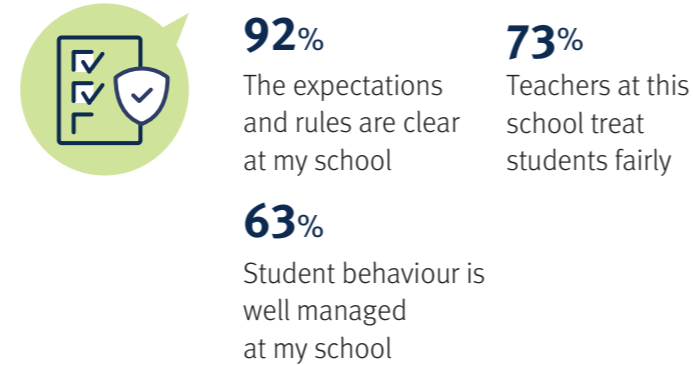


General

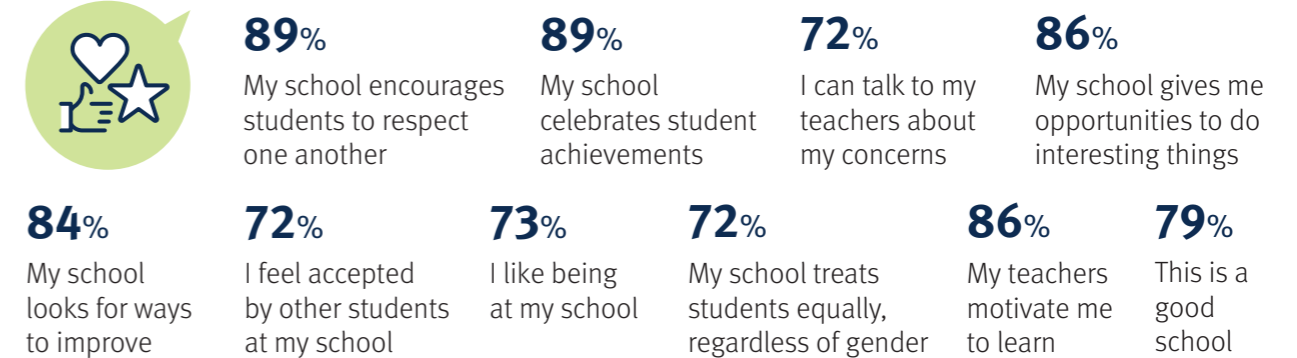


For more information email SchoolOpinionSurvey@qed.qld.gov.au

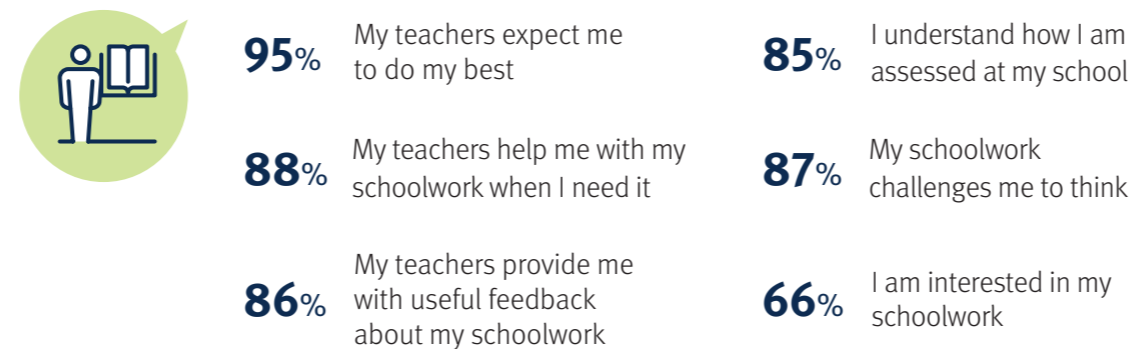
Fairness/clarity of rules



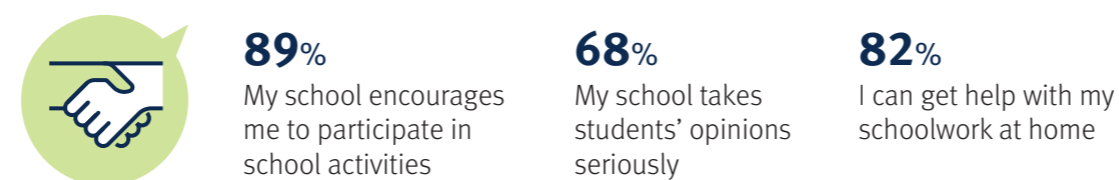
School culture



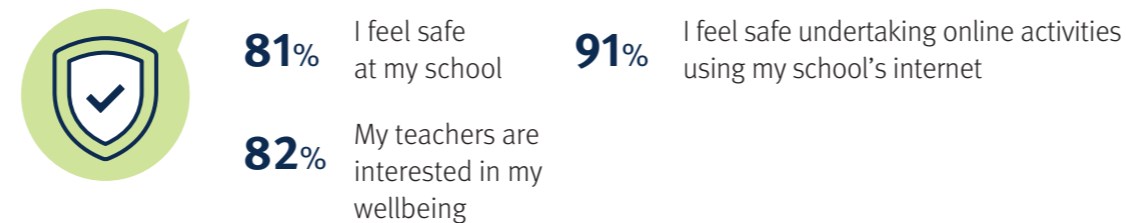
Teaching and learning



Partnerships

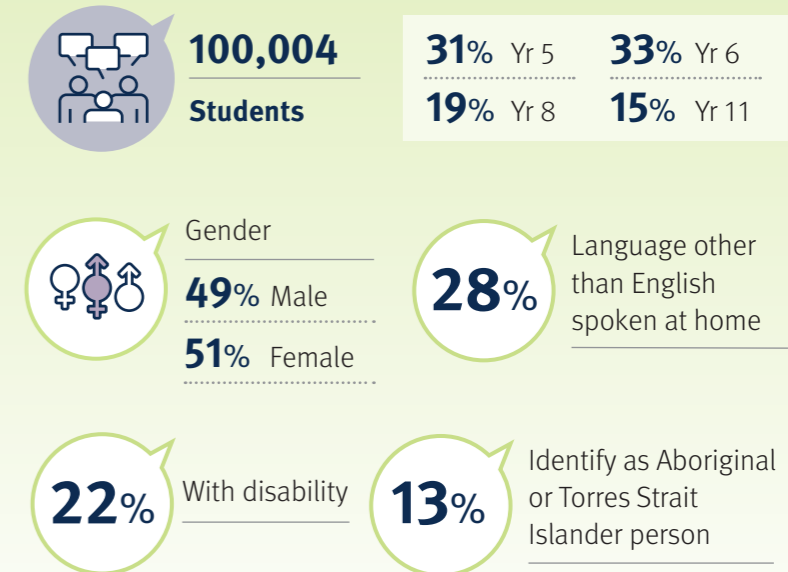


Safety



Students were asked general questions about their school and learning experiences to assist schools identify areas for future improvement.

Who completed the survey



**based on 2024 NCCD data
totals may not equal 100% as demographic questions are optional

This survey was emailed to all families where an email address was available. It was open between 22 July to 16 August 2024. As survey content and methodology changed substantially in 2021, caution should be used when comparing with survey data prior to 2021.

2024 School Opinion Survey Queensland

Students at Special Schools

In Term 3, 2024, the Department of Education conducted its annual School Opinion Survey, inviting students, parents and staff to have their say about schooling and learning at their school.

Survey results help schools to improve. They provide an understanding of what they are doing well, and indicate areas which may require additional attention.



- 89%** I like being at my school

- 92%** I feel safe at my school

- 94%** Teachers at my school treat students fairly

- 94%** My school gives me opportunities to do interesting things

- 94%** I am getting a good education at my school

- 95%** I can access computers and other technologies at my school for learning

- 96%** My teachers encourage me to do my best

- 95%** My teachers care about me


- 95%** My school encourages me to be involved in school activities

- 94%** This is a good school

Students were asked general questions about their school and learning experiences to assist schools identify areas for future improvement.

Who completed the survey

 **702**
Students

 Gender
65% Male
32% Female

**totals may not equal 100% as demographic questions are optional*

For more information email
SchoolOpinionSurvey@qed.qld.gov.au

This survey was made available to students in year levels 4 to 12, between 22 July to 16 August 2024.

2024 School Opinion Survey Queensland

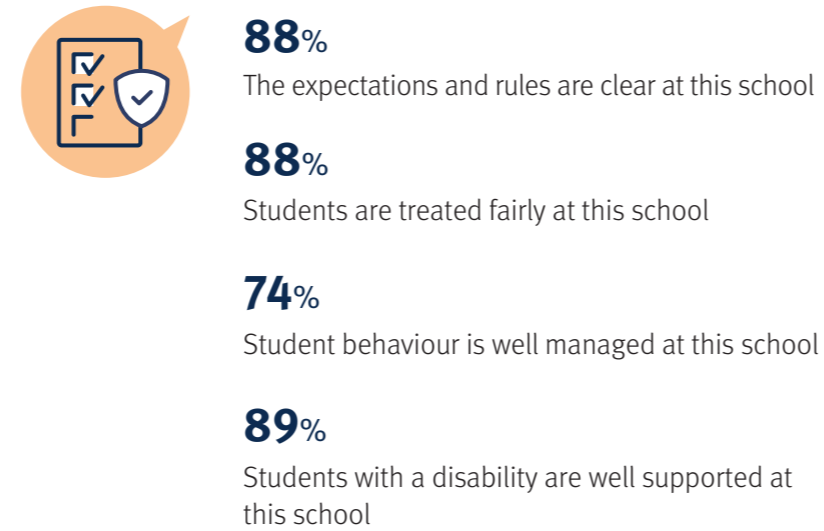
Staff

In Term 3, 2024, the Department of Education conducted its annual School Opinion Survey, inviting students, parents and staff to have their say about schooling and learning at their school.

How we are doing in all areas — overall level of agreement



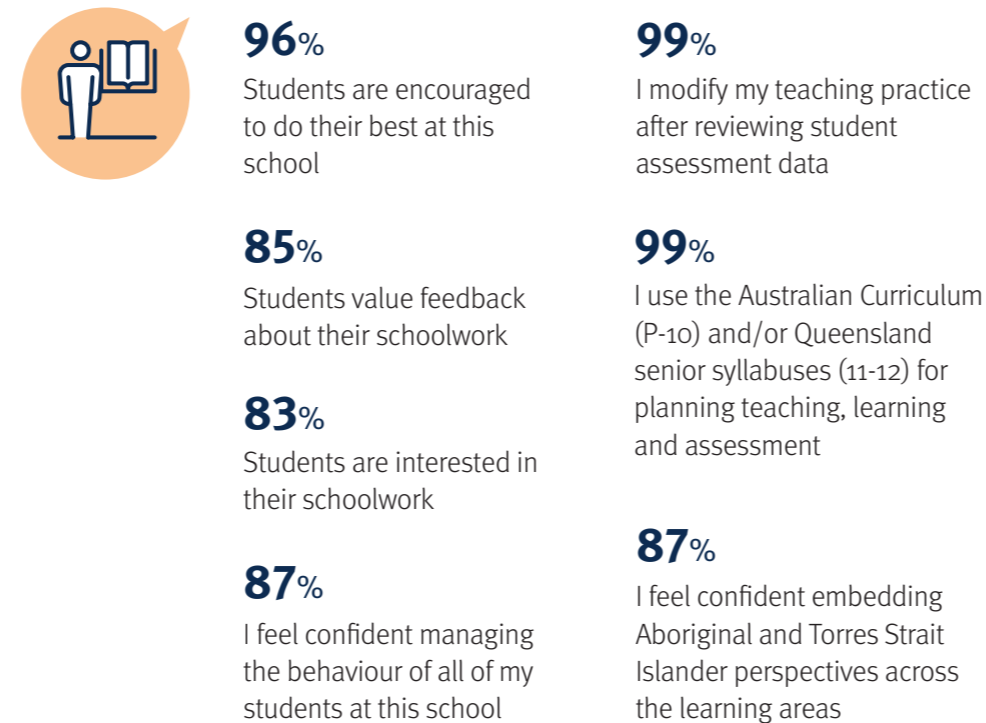
Fairness/clarity of rules



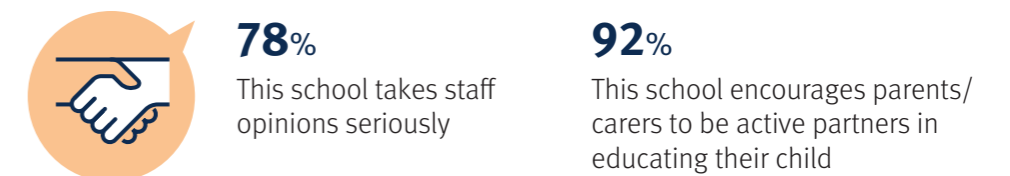
School culture



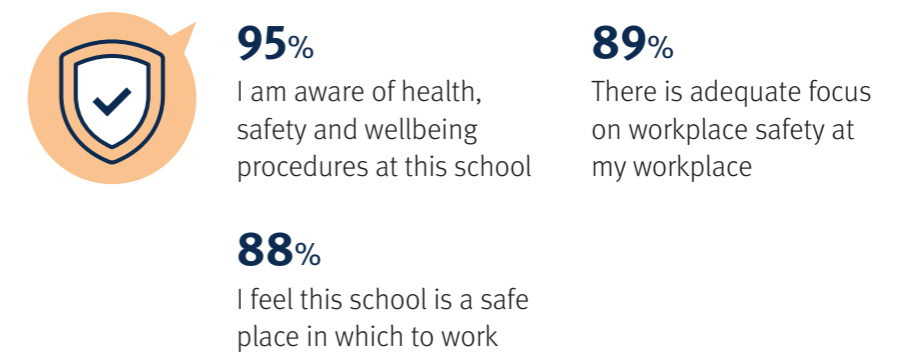
Teaching and learning



Partnerships



Safety

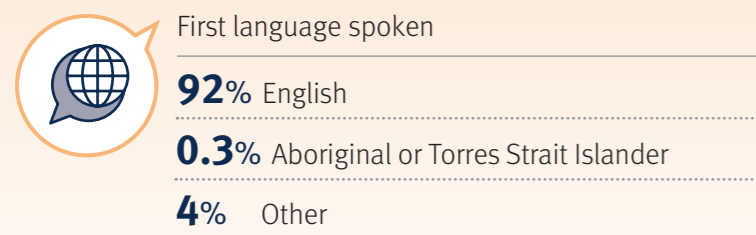
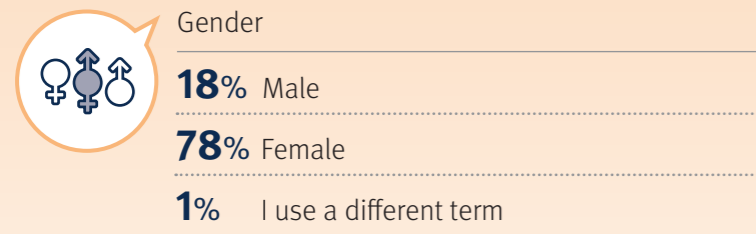


2024 School Opinion Survey Queensland

Staff

Staff were asked general questions about their school and teaching environment to assist schools to identify areas for future improvement.

Who completed the survey



**totals may not equal 100% as demographic questions are optional*

This survey was emailed to all families where an email address was available. It was open between 22 July to 16 August 2024. As survey content and methodology changed substantially in 2021, caution should be used when comparing with survey data prior to 2021.

Staff development

- 81%** I receive useful feedback about my work at this school
- 85%** I have access to relevant professional development
- 84%** This school gives me opportunities to do interesting things
- 85%** This school encourages coaching and mentoring activities

Staff wellbeing

- 78%** Staff are well supported at this school
- 72%** I feel that staff morale is positive at this school
- 75%** Staff are treated fairly and consistently at this school
- 78%** The wellbeing of employees is a priority for this school
- 77%** I am supported to manage the pressures of my workload

Workplace culture

- 84%** This school keeps me well informed about things that are important to my work
- 92%** This school has an inclusive culture where diversity is valued and respected
- 81%** This school's culture supports people to achieve a good work-life balance
- 80%** This school offers flexible work arrangements
- 70%** I am confident that poor performance will be appropriately addressed in this school
- 77%** Recruitment and promotion decisions in this school are fair
- 77%** This school appropriately supports staff following an occupational violence/aggressive incident
- 13%** Have you been subjected to bullying at this school?
- 2%** Have you been subjected to sexual harassment at this school?

Departmental support

- 90%** I feel well supported by the department to lead my school
- 83%** I feel well supported by the department to manage my health and wellbeing

General

- 89%** Information and communication technology issues at this school are resolved promptly
- 88%** This school is well maintained
- 83%** This school is well managed
- 83%** The school leadership team model the behaviours expected of all employees

For more information email SchoolOpinionSurvey@qed.qld.gov.au