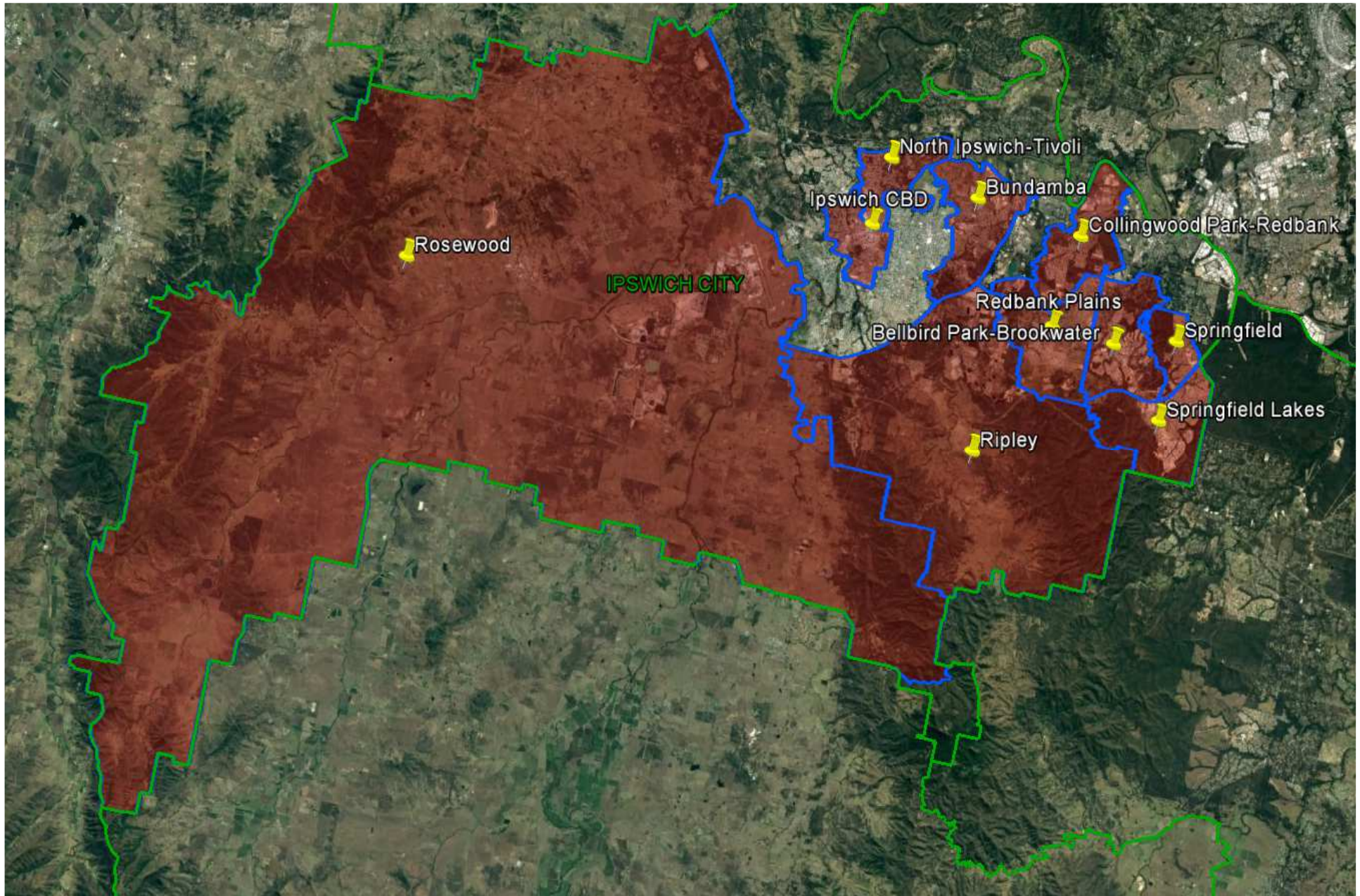


Queensland Schools Planning Reference Committee
Cross-Sectoral New Schools Demand Mapping
2016-2036

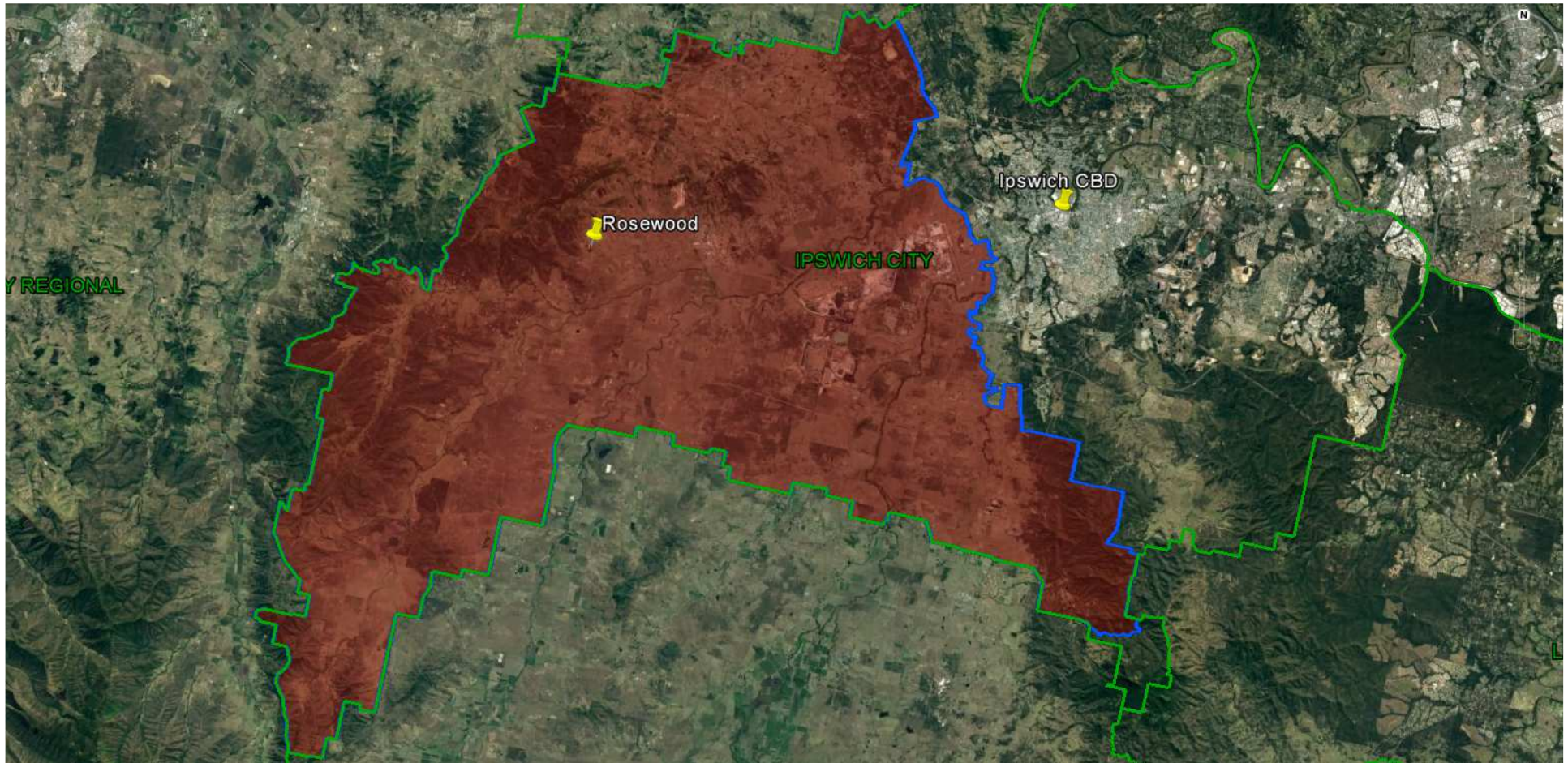
Ipswich City Council

Investigated SA2

- Rosewood
- Bundamba; Ipswich - Central
 - Ripley
- Bellbird Park – Brookwater; Collingwood Park – Redbank; Redbank Plains
 - Springfield; Springfield Lakes
 - North Ipswich - Tivoli

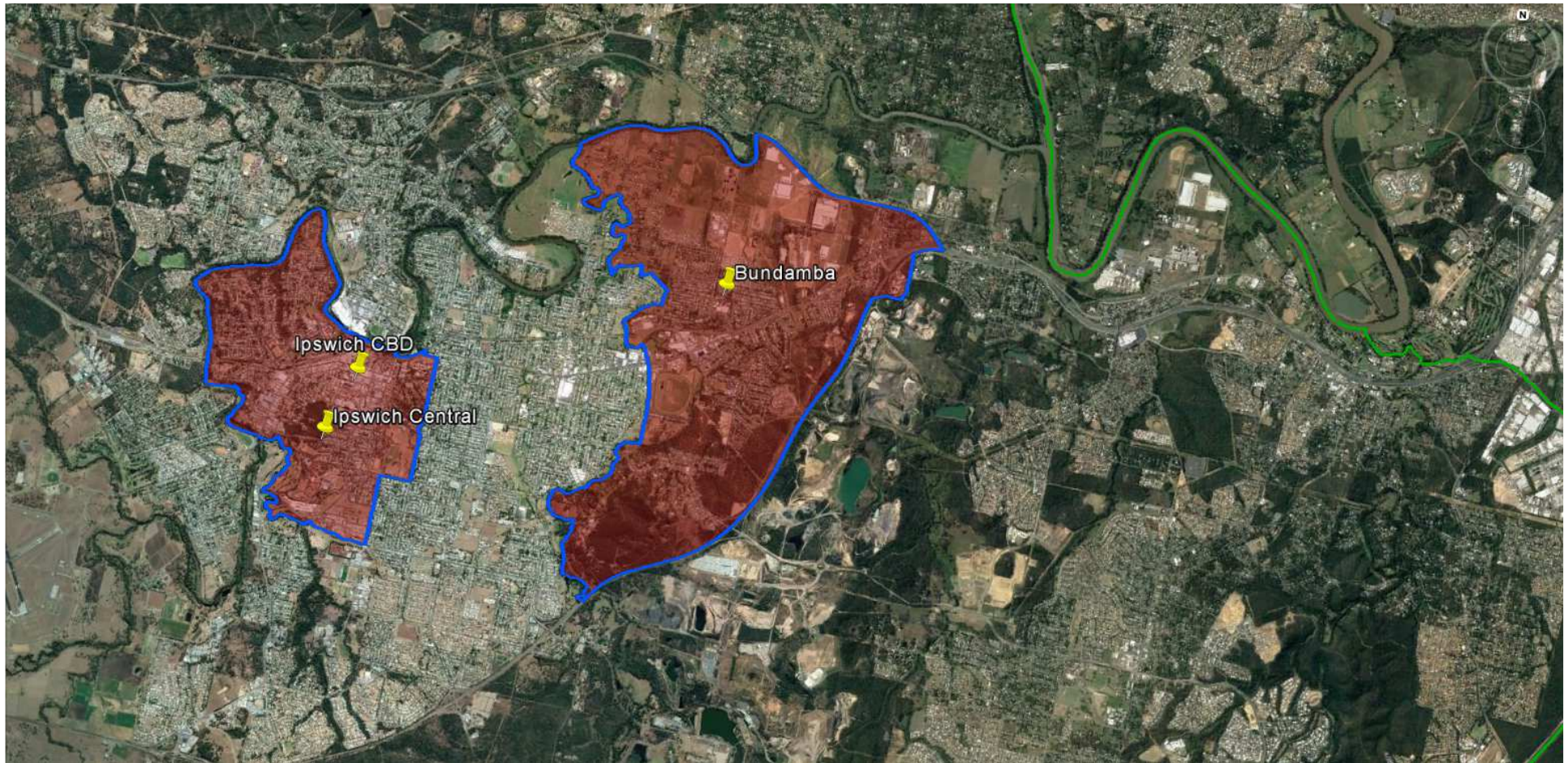


Queensland Schools Planning Reference Committee
SA2 studied in the Ipswich City Council area



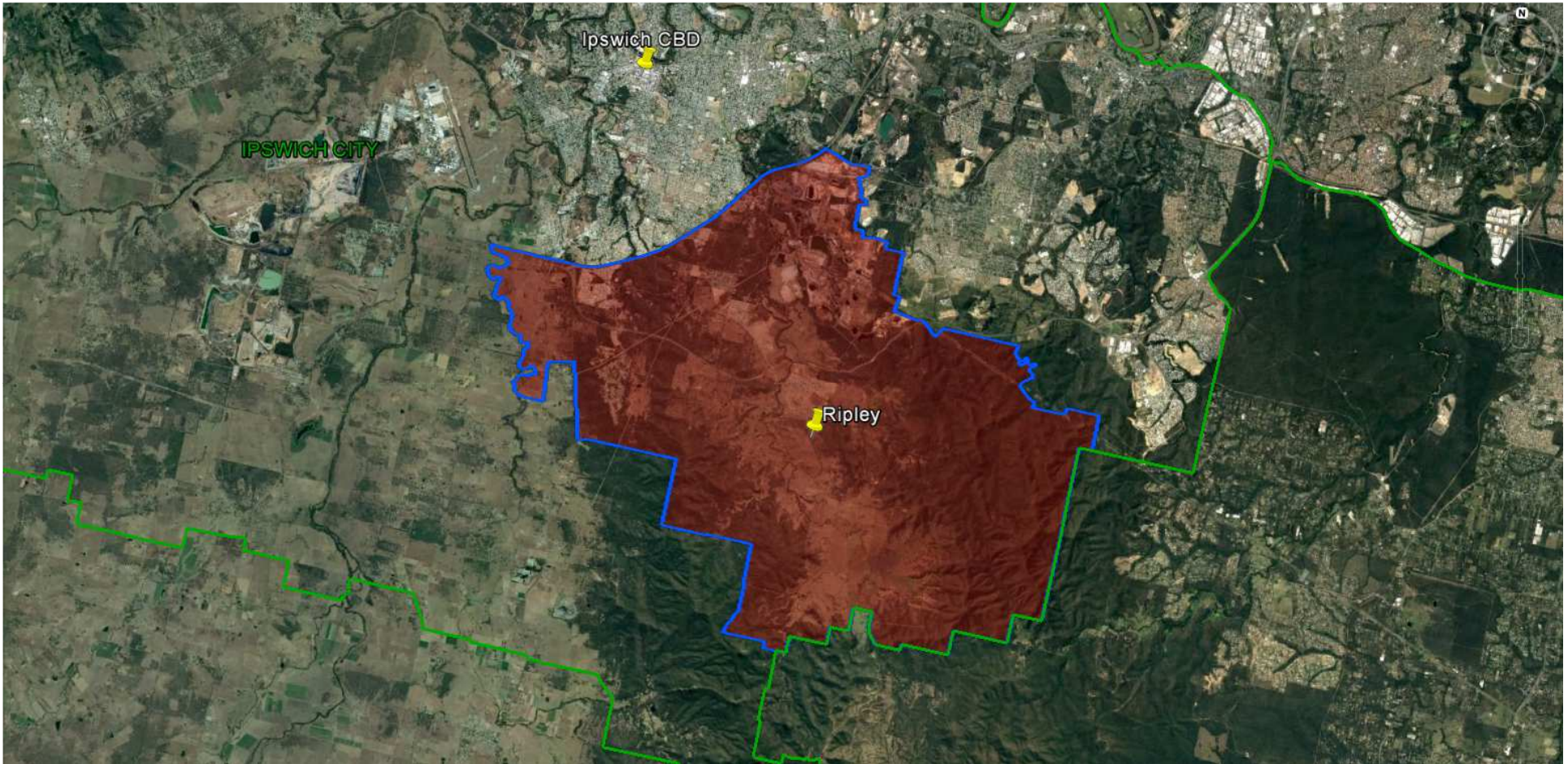
Queensland Schools Planning Reference Committee
 Cross-Sectoral New Schools Demand Mapping 2016-2036
Ipswich City Council
SA2
Rosewood

Findings			
Primary		Secondary	
1st Decade to 2026	2nd Decade to 2036	1st Decade to 2026	2nd Decade to 2036
1 new primary school may be required in the first decade	2-3 new primary schools may be required in the second decade	1 new secondary school may be required in the first decade	1-2 new secondary schools may be required in the second decade



Queensland Schools Planning Reference Committee
 Cross-Sectoral New Schools Demand Mapping 2016-2036
Ipswich City Council
SA2 Cluster
Ipswich Central; Bundamba

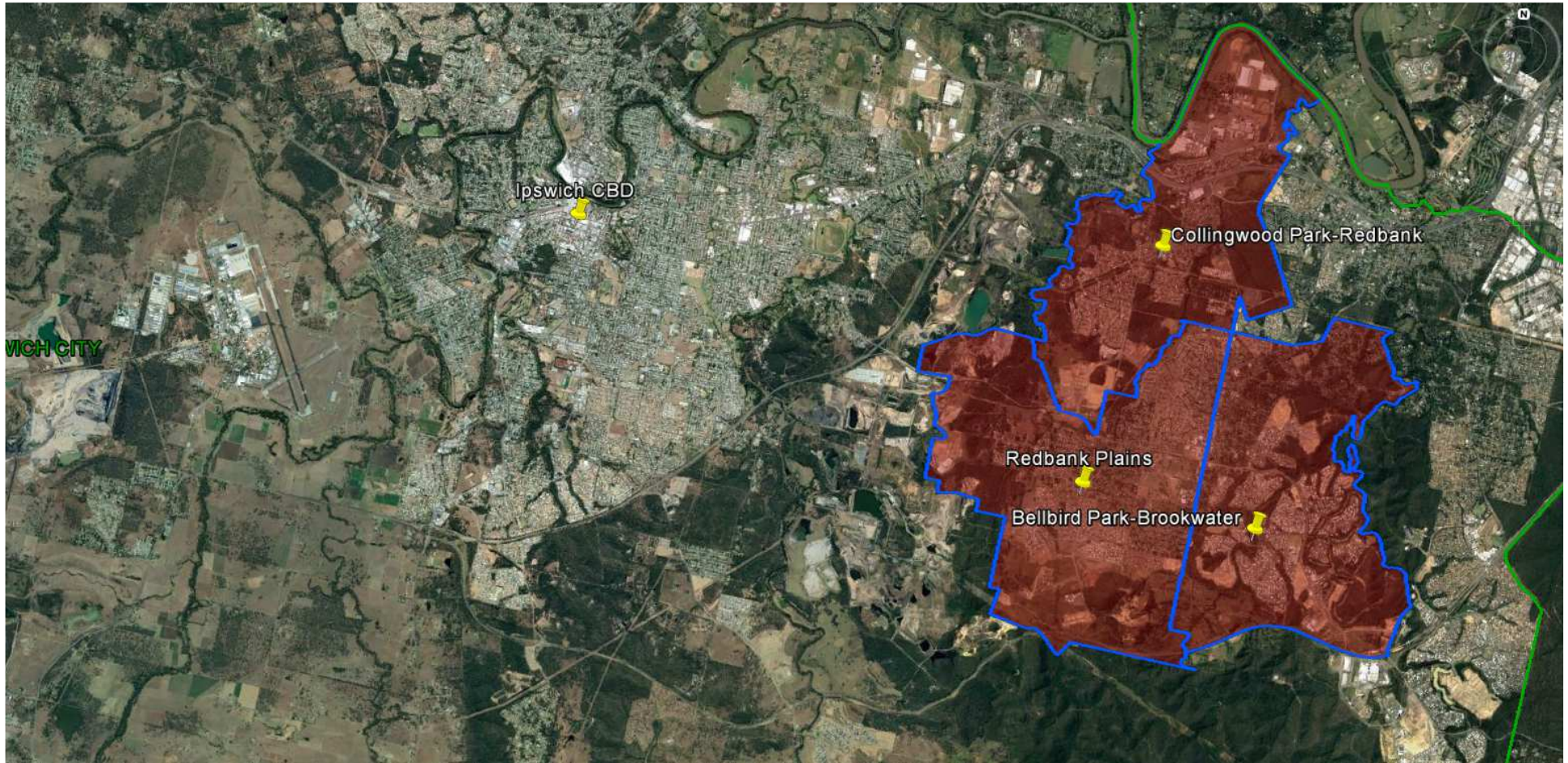
Findings			
Primary		Secondary	
1st Decade to 2026	2nd Decade to 2036	1st Decade to 2026	2nd Decade to 2036
No new primary schools are likely to be required in the first decade	1 new primary school may be required in the second decade	No new secondary schools are likely to be required in the first decade	0 - 1 new secondary school may be required in the second decade



Queensland Schools Planning Reference Committee
 Cross-Sectoral New Schools Demand Mapping 2016-2036
Ipswich City Council
SA2
Ripley

Findings

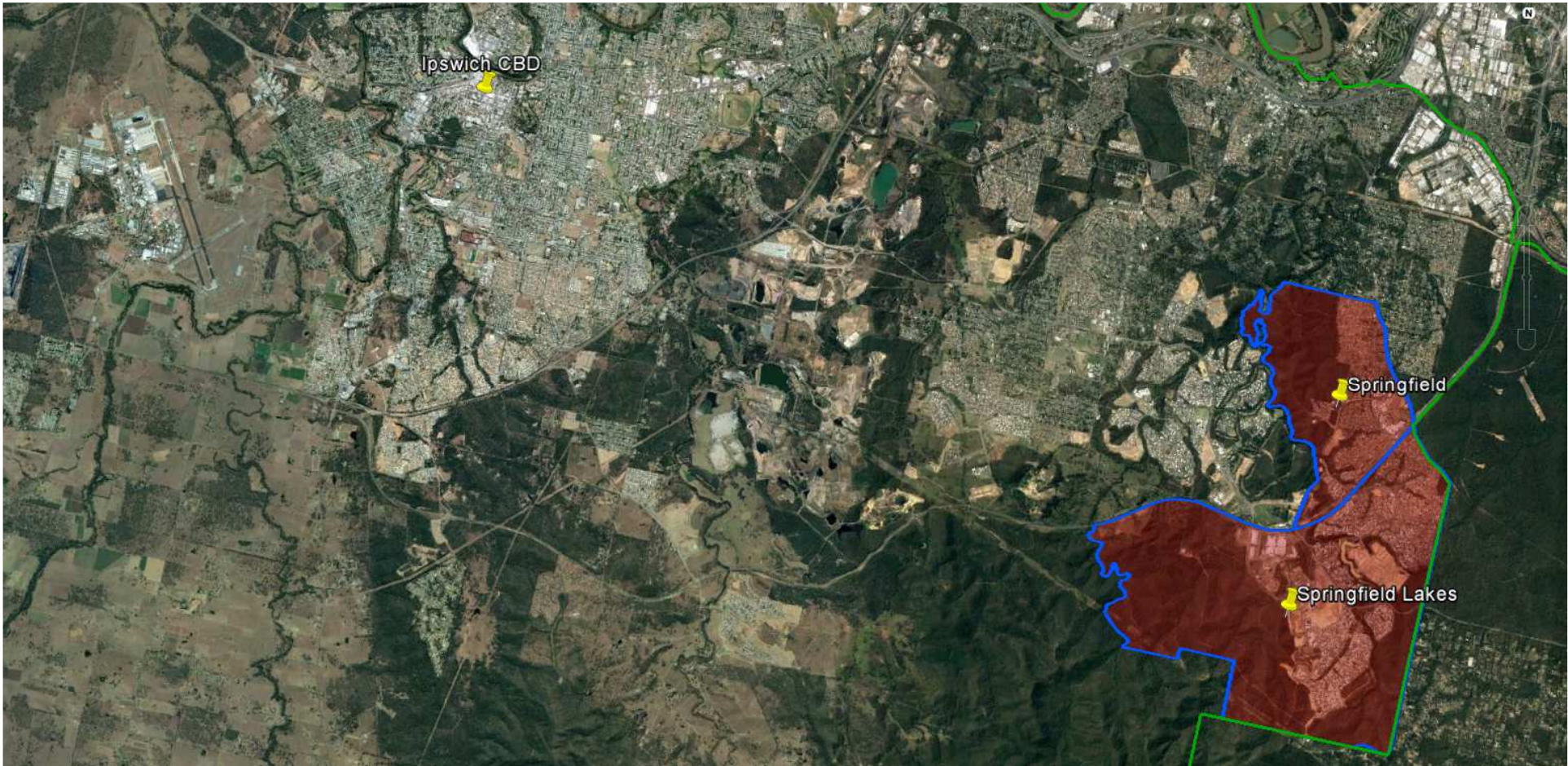
Primary		Secondary	
1st Decade to 2026	2nd Decade to 2036	1st Decade to 2026	2nd Decade to 2036
5-6 new primary schools may be required in the first decade	5-7 new primary schools may be required in the second decade	2-3 new secondary schools may be required in the first decade	2 new secondary schools may be required in the second decade



Queensland Schools Planning Reference Committee
 Cross-Sectoral New Schools Demand Mapping 2016-2036
Ipswich City Council
SA2 Cluster

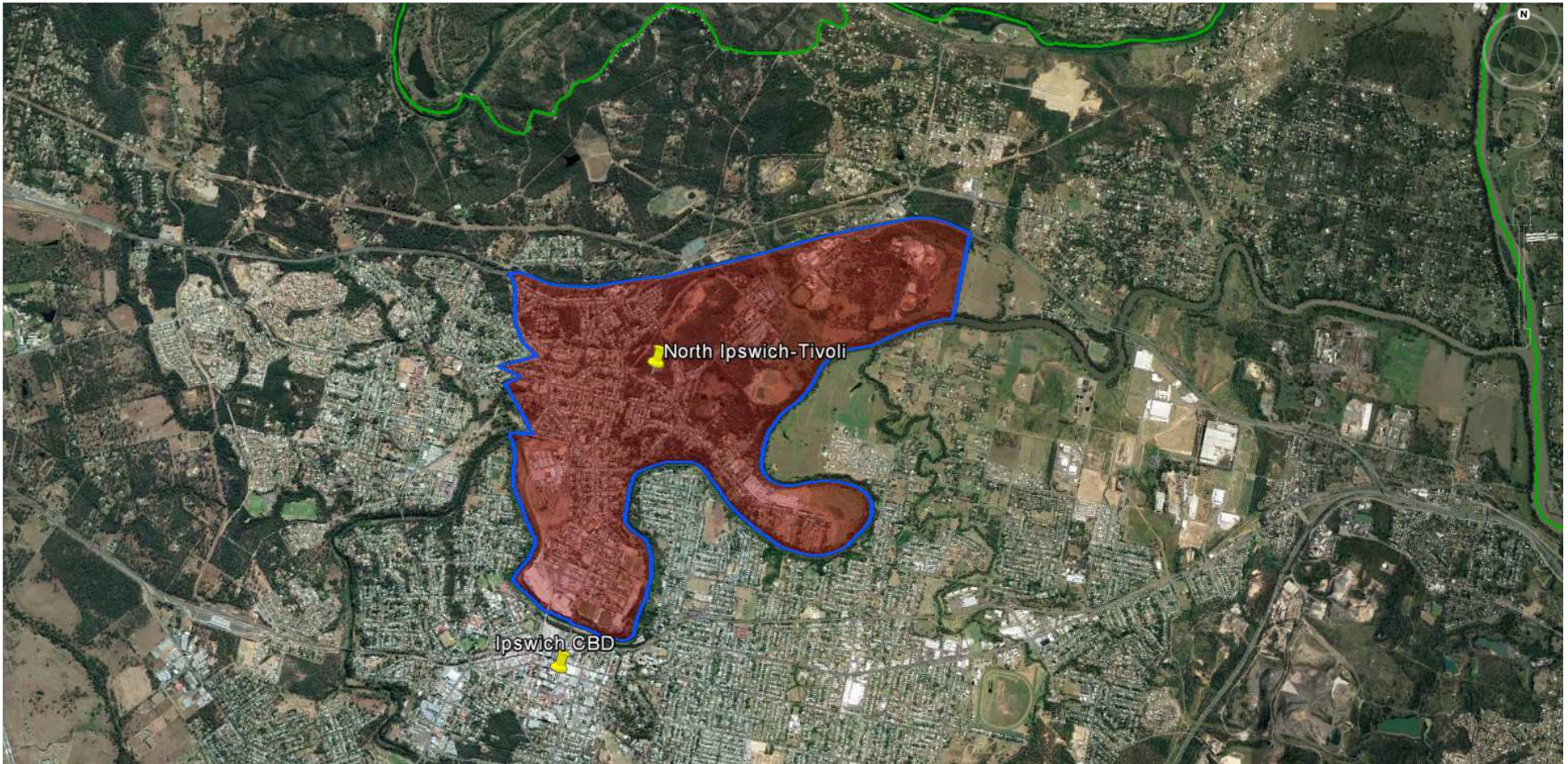
Collingwood Park-Redbank; Redbank Plains; Bellbird Park-Brookwater

Findings			
Primary		Secondary	
1st Decade to 2026	2nd Decade to 2036	1st Decade to 2026	2nd Decade to 2036
1-2 new primary schools may be required in the first decade	3-4 new primary schools may be required in the second decade	1 new secondary school may be required in the first decade	0 - 1 new secondary school may be required in the second decade



Queensland Schools Planning Reference Committee
 Cross-Sectoral New Schools Demand Mapping 2016-2036
Ipswich City Council
SA2 Cluster
Springfield; Springfield Lakes

Findings			
Primary		Secondary	
1st Decade to 2026	2nd Decade to 2036	1st Decade to 2026	2nd Decade to 2036
0-1 new primary school may be required in the first decade	2-3 new primary schools may be required in the second decade	1-2 new secondary schools may be required in the first decade	0 - 1 new secondary school may be required in the second decade



Queensland Schools Planning Reference Committee
 Cross-Sectoral New Schools Demand Mapping 2016-2036
Ipswich City Council
SA2
North Ipswich-Tivoli

Findings			
Primary		Secondary	
1st Decade to 2026	2nd Decade to 2036	1st Decade to 2026	2nd Decade to 2036
No new primary schools are likely to be required in the first decade	0-1 new primary school may be required in the second decade	No new secondary schools are likely to be required in the first decade	No new secondary schools are likely to be required in the second decade