

Wujal Wujal

Planning new educational buildings and spaces for Wujal Wujal Community Kindergarten and Bloomfield River State School

Bloomfield River State School – image by the Queensland Government

The Wujal Wujal Aboriginal Shire Council, together with the Queensland Government, would like to hear what you think about plans for Wujal Wujal Community Kindergarten and Bloomfield River State School

Discrete Communities Infrastructure program

Improving schools for Aboriginal and Torres Strait Islander communities.

The Discrete Communities Infrastructure (DCI) program is a Queensland Government program which provides funding to better plan, improve and build educational buildings and spaces by co-designing them with Aboriginal and Torres Strait Islander communities.

The Wujal Wujal DCI co-design program

For the past 12 months, the Wujal Wujal Aboriginal Shire Council members and key school community members have been working with the DCI team to co-design a master plan and identify key projects for Wujal Wujal Community Kindergarten and Bloomfield River State School.

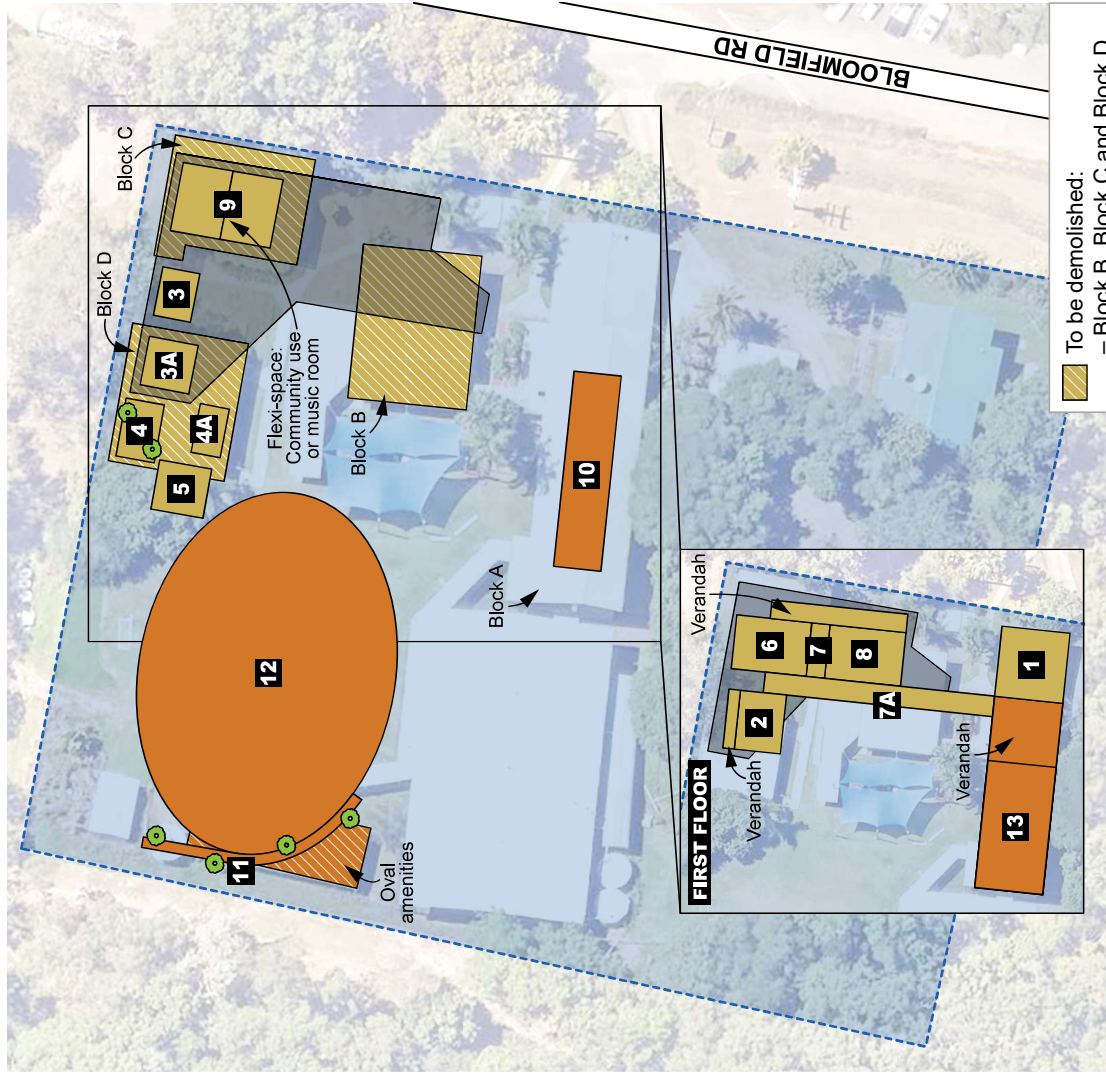
Next steps:

- **Seek community feedback on:**
 - The master plan.
 - A list of prioritised projects, categorised into Stage 1 potential projects and Stage 2 potential projects.



Bloomfield River State School sign – image by the Queensland Government

Bloomfield River State School master plan



- Key**
- Bloomfield River State School
 - Structure to be demolished
 - Undercroft
 - Landscape
- STAGE 1 POTENTIAL PROJECTS**
- 1 Add first floor to Admin block
 - 2 New classroom with verandah
 - 3 New tuckshop
 - 3A New covered lunch area
- STAGE 2 POTENTIAL PROJECTS**
- 4 New veggie garden
 - 4A New sandpit
 - 5 New outdoor lunch area
 - 6 New classroom with verandah
 - 7 New amenities
 - 7A New walkway connection to Block A
 - 8 New classroom with verandah
 - 9 2 x new rooms for music/community use
- To be demolished:**
- Block B, Block C and Block D
- STAGE 2 POTENTIAL PROJECTS**
- 10 New Block A amenities
 - 11 New retaining wall, tiered seats and landscaping
 - 12 Oval upgrade
 - 13 Block A upgrade to include teacher training room, art and special learning room with verandah
- To be demolished:**
- Oval amenities
- Note: All proposed projects are unfunded.

Wujal Wujal Community Kindergarten master plan



- Key**
- Wujal Wujal Community Kindergarten
 - Ramp direction
 - Landscape
 - Tree bench
- STAGE 1 POTENTIAL PROJECTS**
- 1 Verandah and roof extension, includes new access to amenities
 - 2 Covered entry way and ramp area with access to parents' waiting area
- STAGE 2 POTENTIAL PROJECTS**
- 3 New stairs and entry
 - 4 New shed
 - 5 New enclosed office
 - 6 New staff room with extra fridge
 - 7 Kitchen refurbishment with bigger fridge
 - 8 New car park
 - 9 New community waiting area
 - 9A New playground
- STAGE 1 POTENTIAL PROJECTS**
- 10 Soft pavement and insulation upgrade in covered play area
 - 11 New shed and veggie garden
 - 12 New landscaped bench tree in shaded area
 - 12A New rock garden and landscaped area
 - 13 New trees for future natural shade
- Note: All proposed projects are unfunded.

Where is the Wujal Wujal DCI co-design program at?

1

Information sharing

2

Vision

3

Education master plan and project concept plan

4

Stakeholder review

5 *The program is at this stage*

Community consultation

6

Final stakeholder review

7

Endorsement



Bloomfield Falls – image by the Queensland Government



How to have your say

Survey closes Friday, 22 May 2026



Fill in our survey

OR



Write to us

OR



Come and have a yarn with us

Scan the QR code, or go to survey.qed.qld.gov.au/n/epgh09k



Send your feedback to **Infrastructure.HaveYourSay@qed.qld.gov.au**

You can also use the feedback form and take it to the Wujal Wujal Aboriginal Shire Council. Or drop it at the administration building at Wujal Wujal Community Kindergarten or Bloomfield River State School.

Visit us at the following locations and go in the running to win a \$50 ABIS voucher when you give your feedback!

Tuesday, 5 May 2026

Wujal Wujal Community Kindergarten:

10 am–11:30 am

OR

ABIS Supermarket:

12:30 pm–1:30 pm

OR

School bus drop-off (mango trees area):

2:30 pm–3:30 pm