

Palm Island

Planning new educational buildings and spaces for Bwgcolman Community School

Palm Island aerial view – image by the Queensland Government

The Palm Island Aboriginal Shire Council, together with the Queensland Government, would like to hear what you think about plans for Bwgcolman Community School

Discrete Communities Infrastructure program

Improving schools for Aboriginal and Torres Strait Islander communities.

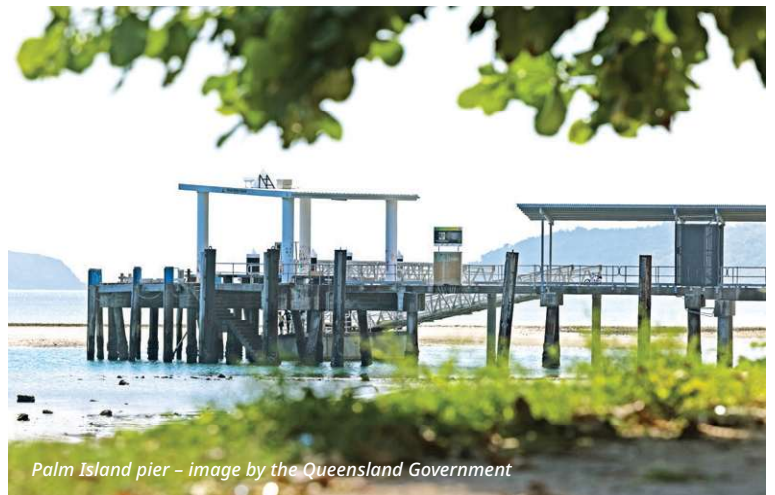
The Discrete Communities Infrastructure (DCI) program is a Queensland Government program which provides funding to better plan, improve and build educational buildings and spaces by co-designing them with Aboriginal and Torres Strait Islander communities.

The Palm Island DCI co-design program

For the past 12 months, the Palm Island Aboriginal Shire Council members and key school community members have been working with the DCI team to co-design a master plan and identify key projects for Bwgcolman Community School.

Next steps:

- **Seek community feedback on:**
 - The master plan.
 - A list of prioritised projects, categorised into Stage 1, Stage 2 and Stage 3 potential projects.



Palm Island pier – image by the Queensland Government

Bwngolman Community School master plan



Key

- Bwngolman Community School
- Structure to be demolished
- Structure to be relocated

STAGE 1 POTENTIAL PROJECTS

- 1** New sports field
- 1A** New long jump pit
- 1B** New shot put circle
- 2** Demountable residences to be relocated
- 3** New mini covered spectator shelters
- 4** New car park
- 5** Block B to be refurbished
- 6** New 1/3 basketball court
- 7** New storage shed
- To be demolished:**
 - Groundsman shed
 - Storage shed

STAGE 2 POTENTIAL PROJECTS

- 8** Existing multi-purpose hall to provide air-conditioning, netball line marking and removable posts
- 8A** New stage, storage and gym extension
- 9** Relocated sports shed
- 10** New drop-off/pick-up zone
- 10A** New covered walkway
- To be demolished:**
 - Prep shed
 - Senior amenities

STAGE 3 POTENTIAL PROJECTS

- 11** New Block K with sheds
- 12** New mini covered spectator shelter
- 13** Future expansion to a full-size touch football field
- To be demolished:**
 - Block K
 - Boat shed
 - Storage block and container
 - Groundsman shed

Note: All proposed projects are unfunded.

Where is the Palm Island DCI co-design program at?

1

Information sharing

2

Vision

3

Education master plan and project concept plan

4

Stakeholder review

5 *The program is at this stage*

Community consultation

6

Final stakeholder review

7

Endorsement

Palm Island aerial view – image by the Queensland Government



How to have your say

Survey closes Friday, 29 May 2026



Fill in our survey

OR



Write to us

OR



Come and have a yarn with us

Scan the QR code, or go to survey.qed.qld.gov.au/n/b2Rh26V



Send your feedback to **Infrastructure.HaveYourSay@qed.qld.gov.au**

You can also use the feedback form and take it to the Palm Island Aboriginal Shire Council. Or drop it at the administration building at Bwgcolman Community School

Visit us at the **Palm Island Mall** and go in the running to win a \$50 ABIS voucher when you give your feedback!

Wednesday, 13 May 2026

Palm Island Mall
8 am–3 pm