



Strategic Plan 2016–20

Advancing education

Preparing Queenslanders with the knowledge, skills and confidence to **participate successfully** in the **economy** and **broader community**.

Our objectives

We are focusing on the following objectives as we work together to lift outcomes for Queenslanders:

- children engaged in quality early years programs and making positive transitions
- students engaged in learning, achieving and successfully transitioning to further education, training and work
- Queenslanders skilled to participate successfully in the economy and broader community
- resources targeted to improve learning and skilling outcomes.

Through this focus, we will contribute to the Queensland Government’s objectives for the community:

- creating jobs and a diverse economy
- delivering quality frontline services
- building safe, caring and connected communities
- protecting the environment.

Our challenges

We will actively manage our key strategic challenges, including:

- preparing students for a knowledge-based economy and a digitally connected world
- supporting vulnerable Queenslanders
- increasing workforce supply in targeted areas and building workforce capability
- improving Aboriginal and Torres Strait Islander outcomes
- supporting rural and remote communities.

We will actively mitigate risks that we have the lowest tolerance for:

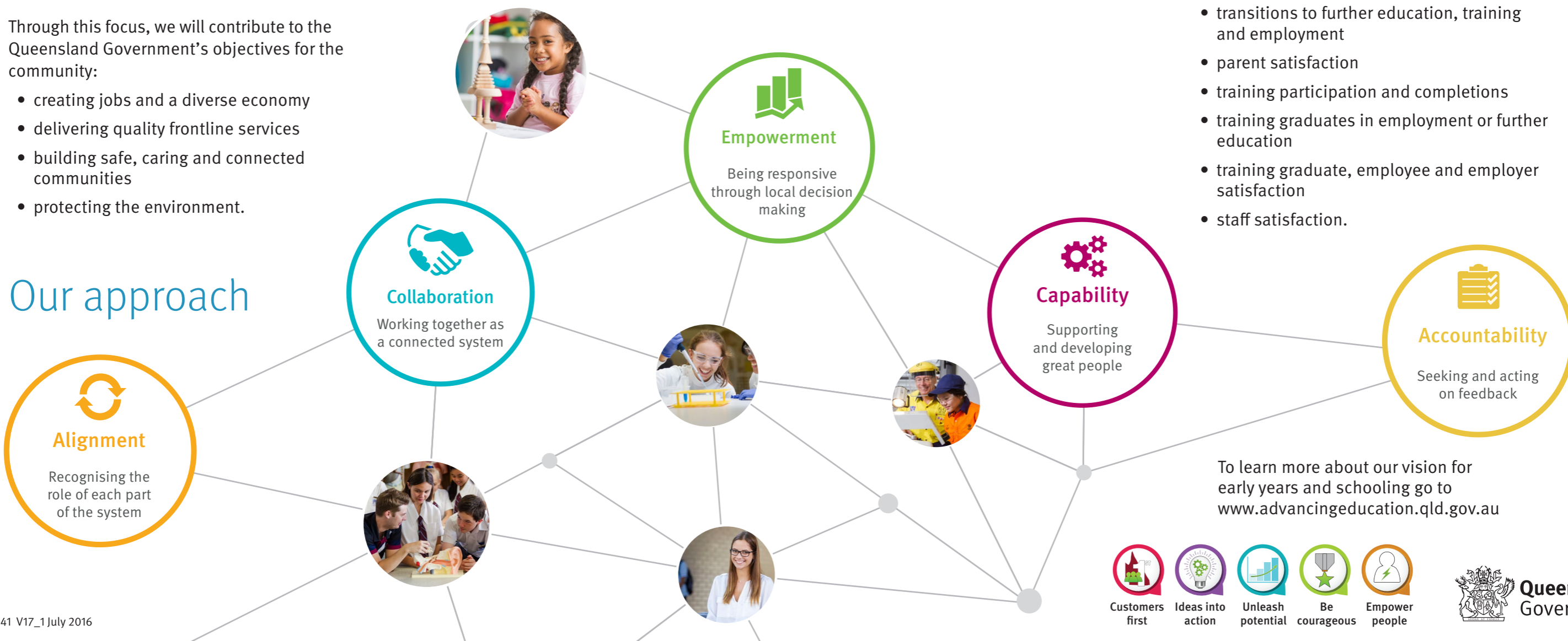
- child and student safety
- workplace health and safety
- information security
- fraud and corruption
- legislation and regulation compliance.

Our performance

We will measure our performance by monitoring progress in:

- participation in early childhood education programs
- early years services meeting National Quality Standard
- school attendance
- literacy and numeracy achievement
- Year 12 or equivalent
- equity of outcomes for Aboriginal and Torres Strait Islander Queenslanders
- transitions to further education, training and employment
- parent satisfaction
- training participation and completions
- training graduates in employment or further education
- training graduate, employee and employer satisfaction
- staff satisfaction.

Our approach



Our priorities

By **working together** and **focusing on our priorities** we will lift outcomes for Queenslanders

Early years

children engaged in quality early years programs and making positive transitions

- strengthening connections between home, early childhood services and school
- engaging parents and carers in their child’s learning and development
- increasing Aboriginal and Torres Strait Islander children’s participation in kindy
- increasing vulnerable children’s participation in kindy
- providing innovative options for quality early childhood programs in rural and remote communities
- delivering continuous quality improvement through effective regulatory practice and performance reporting
- integrating early childhood services across community and government agencies
- investing in evidence-based programs to support early learning and development
- supporting age-appropriate teaching and learning

Schooling

students engaged in learning, achieving and successfully transitioning to further education, training and work

- empowering students to achieve their learning goals by focusing on the learning needs of every student
- supporting teachers to employ high quality, evidence-based teaching practices
- embedding digital literacy and enhancing the teaching of science, technology, engineering and mathematics
- connecting students at the global level through languages and cultural experiences
- leading school improvement, building teacher capability and lifting student achievement
- engaging communities in local decision making to support improved outcomes
- conducting independent reviews to inform school improvement
- supporting rural and remote state schools to improve learning outcomes
- providing safe, supportive and disciplined learning environments

Training and skilling

Queenslanders skilled to participate successfully in the economy and broader community

- prioritising skills, training funding and incentives to drive a strong economy
- supporting Queenslanders to enter the workforce through targeted skills programs
- informing students to make successful skilling and training choices through expanded pathway options
- partnering with industry to identify skilling needs and target training
- supporting TAFE Queensland to provide sustainable, responsive and engaging training services
- providing quality training through effective monitoring of training providers to support entry into the workforce
- supporting disadvantaged Queenslanders to access training for enhanced job opportunities

Supporting services

resources targeted to improve learning and skilling outcomes

- empowering staff to work together to deliver high quality customer outcomes
- building and maintaining a skilled, diverse and capable workforce
- providing safe, healthy and inclusive workplaces
- strengthening community partnerships and engagement
- building strong relationships across sectors, agencies, portfolio bodies and jurisdictions
- working collaboratively across regions and with services to deliver improved outcomes
- planning and targeting investment to maximise outcomes
- delivering fit-for-purpose and future-focused infrastructure
- implementing innovative, efficient and integrated ICT solutions
- collaborating to develop effective policy
- supporting evidence-based practice through data and performance analysis
- delivering good governance and accountable decision making

